



SZABO SCANDIC

Part of Europa Biosite

Produktinformation



Forschungsprodukte & Biochemikalien



Zellkultur & Verbrauchsmaterial



Diagnostik & molekulare Diagnostik



Laborgeräte & Service

Weitere Information auf den folgenden Seiten!
See the following pages for more information!



Lieferung & Zahlungsart

siehe unsere [Liefer- und Versandbedingungen](#)

Zuschläge

- Mindermengenzuschlag
- Trockeneiszuschlag
- Gefahrgutzuschlag
- Expressversand

SZABO-SCANDIC HandelsgmbH

Quellenstraße 110, A-1100 Wien

T. +43(0)1 489 3961-0

F. +43(0)1 489 3961-7

mail@szabo-scandic.com

www.szabo-scandic.com

[linkedin.com/company/szaboscandic](https://www.linkedin.com/company/szaboscandic) 

DBC1 /p30 DBC Antibody

Rabbit Polyclonal

Antigen Affinity Purified

Protein ID Q6P0Q9

Catalog No. A300-432A

GeneID 57805

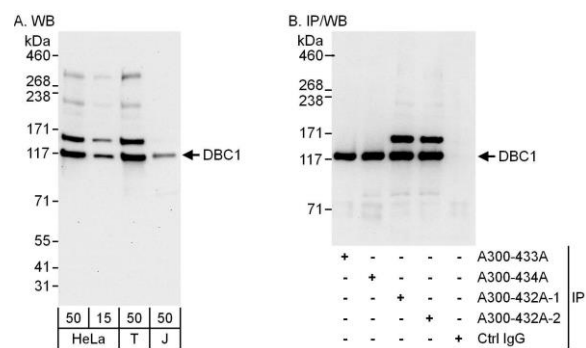
Lot No. A300-432A-2



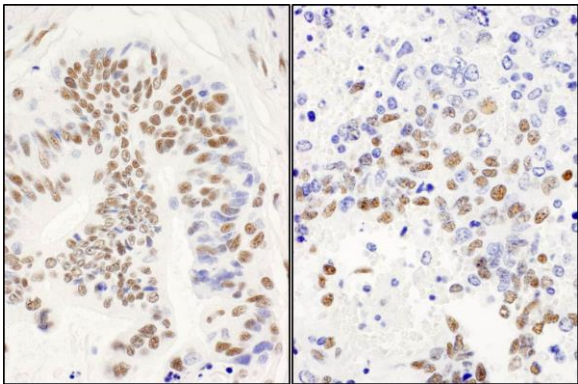
APPLICATIONS	WB, IP, IHC						
SPECIES REACTIVITY	Human, Mouse						
PRESUMED REACTIVITY	Based on 100% sequence identity, this antibody is predicted to react with Orangutan						
AMOUNT	100 µl						
CONCENTRATION	1000 µg/ml						
STORAGE/SHELF LIFE	2 – 8° C / 1 year from date of receipt						
PHYSICAL STATE	Liquid						
BUFFER	Tris-citrate/phosphate buffer, pH 7 to 8 containing 0.09% Sodium Azide						
ISOTYPE	IgG						
ORIGIN	USA						
PRODUCTION PROCEDURES	<p>Antibody was affinity purified using an epitope specific to DBC1 immobilized on solid support.</p> <p>The epitope recognized by A300-432A maps to a region between residues 1 and 50 of human Deleted in Breast Cancer 1 using the numbering given in TrEMBL entry Q6P0Q9 (GeneID 57805).</p> <p>Immunoglobulin concentration was determined by extinction coefficient: absorbance at 280 nm of 1.4 equals 1.0 mg of IgG.</p>						
APPLICATIONS	<p>Centrifuge tube to remove product from lid. Optimal working dilutions should be determined experimentally by the investigator. Prepare working dilution immediately before use.</p> <table><tr><td>Western Blot</td><td>1:10,000 – 1:20,000</td></tr><tr><td>Immunoprecipitation</td><td>1 – 10 µg/mg lysate</td></tr><tr><td>Immunohistochemistry</td><td>1:1,000 – 1:5,000. Epitope retrieval with citrate buffer pH 6.0 is recommended for FFPE tissue sections.</td></tr></table>	Western Blot	1:10,000 – 1:20,000	Immunoprecipitation	1 – 10 µg/mg lysate	Immunohistochemistry	1:1,000 – 1:5,000. Epitope retrieval with citrate buffer pH 6.0 is recommended for FFPE tissue sections.
Western Blot	1:10,000 – 1:20,000						
Immunoprecipitation	1 – 10 µg/mg lysate						
Immunohistochemistry	1:1,000 – 1:5,000. Epitope retrieval with citrate buffer pH 6.0 is recommended for FFPE tissue sections.						
APPLICATION NOTES	<p>Western blot of immunoprecipitates performed using Normal Pig Serum (Cat. No. S100-020), Goat anti-Rabbit Light Chain HRP Conjugate (Cat. No. A120-113P) and 4-8% SDS-PAGE (link to IP-western blot protocol in Additional Info section below).</p> <p>Western blot of lysates performed using standard western blot reagents and 4-8% SDS-PAGE.</p>						
IHC HUMAN CONTROLS	Breast Carcinoma, Colon Carcinoma, Ovarian Carcinoma, Prostate Carcinoma, Skin Squamous Cell Carcinoma, Stomach Adenocarcinoma, Testicular Seminoma						
IHC MOUSE CONTROLS	Renal Cell Carcinoma, Teratoma						
ADDITIONAL INFO	<p>https://www.bethyl.com/product/A300-432A</p> <p>Use the link above to view SDS, a current list of citations, and other product specific information.</p> <p>IP-western blot protocol: https://www.bethyl.com/content/protocol_IP_WB</p>						

This document certifies that this product has met all of the quality control standards defined by Bethyl Laboratories, Inc.
Eric McIntush, PhD | Chief Scientific Officer

Date: June 21, 2019



Detection of human DBC1/p30 DBC by western blot and immunoprecipitation. *Samples:* Whole cell lysate from HeLa (15 and 50 μ g for WB; 1 mg for IP, 20% of IP loaded), HEK293T (T; 50 μ g) and Jurkat (J; 50 μ g) cells. *Antibodies:* Affinity purified rabbit anti-DBC1/p30 DBC antibody A300-432A (lot number A300-432A-2) used for WB at 0.1 μ g/ml (A) and 1 μ g/ml (B) and used for IP at 6 μ g/mg lysate. DBC1/p30 DBC was also immunoprecipitated by a previous lot (A300-432A-2) of this antibody and by affinity purified rabbit anti-DBC1/p30 DBC antibodies A300-433A and A300-434A, which recognize downstream epitopes. *Detection:* Chemiluminescence with exposure times of 30 seconds (A) and 10 seconds (B).



Detection of human and mouse DBC1/p30 DBC by immunohistochemistry. *Sample:* FFPE sections of human ovarian carcinoma (left) and mouse teratoma (right). *Antibody:* Affinity purified rabbit anti- DBC1/p30 DBC (Cat. No. A300-432A Lot2) used at a dilution of 1:5,000 (0.2 μ g/ml) and 1:1,000 (1 μ g/ml). *Detection:* DAB