



# SZABO SCANDIC

Part of Europa Biosite

## Produktinformation



Forschungsprodukte & Biochemikalien



Zellkultur & Verbrauchsmaterial



Diagnostik & molekulare Diagnostik



Laborgeräte & Service

Weitere Information auf den folgenden Seiten!  
See the following pages for more information!



### Lieferung & Zahlungsart

siehe unsere [Liefer- und Versandbedingungen](#)

### Zuschläge

- Mindermengenzuschlag
- Trockeneiszuschlag
- Gefahrgutzuschlag
- Expressversand

### SZABO-SCANDIC HandelsgmbH

Quellenstraße 110, A-1100 Wien

T. +43(0)1 489 3961-0

F. +43(0)1 489 3961-7

[mail@szabo-scandic.com](mailto:mail@szabo-scandic.com)

[www.szabo-scandic.com](http://www.szabo-scandic.com)

[linkedin.com/company/szaboscandic](https://www.linkedin.com/company/szaboscandic) 

# PNUTS Antibody

Rabbit Polyclonal

Antigen Affinity Purified	RefSeq ID	NP_002705.2
Catalog No. A300-439A	Uniprot ID	Q96QC0
Lot No. 4	GenelD	5514

<b>APPLICATIONS</b>	WB, IP, IHC
<b>SPECIES REACTIVITY</b>	Human
<b>PRESUMED REACTIVITY</b>	Based on 100% sequence identity, this antibody is predicted to react with Rat, Monkey and Chimpanzee
<b>AMOUNT</b>	100 µl
<b>CONCENTRATION</b>	1000 µg/ml
<b>STORAGE/SHELF LIFE</b>	2 – 8°C / 1 year from date of receipt
<b>PHYSICAL STATE</b>	Liquid
<b>BUFFER</b>	Tris-citrate/phosphate buffer, pH 7 to 8 containing 0.09% Sodium Azide
<b>ISOTYPE</b>	IgG
<b>ORIGIN</b>	USA
<b>PRODUCTION PROCEDURES</b>	Antibody was affinity purified using an epitope specific to PNUTS immobilized on solid support.

The epitope recognized by A300-439A maps to a region between residues 350 and 400 of human Phosphatase Nuclear Targeting Subunit (a.k.a. Protein Phosphatase 1, regulatory subunit 10) using the numbering given in TrEMBL entry Q96QC0 (GenelD 5514).

Immunoglobulin concentration was determined using Beer's Law where 1 mg/mL IgG has an A280 of 1.4.

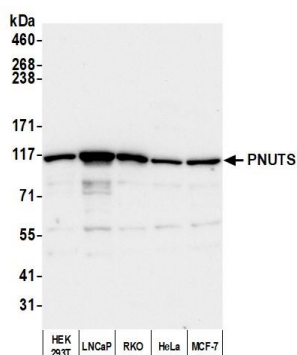
<b>APPLICATIONS</b>	Centrifuge tube to remove product from lid. Optimal working dilutions should be determined experimentally by the investigator. Prepare working dilution immediately before use.
	Western Blot 1:1000 – 1:10,000
	Immunoprecipitation 6 µg/mg lysate
	Immunohistochemistry 1:500 – 1:2000. Epitope retrieval with citrate buffer pH 6.0 is recommended for FFPE tissue sections.

**IHC HUMAN CONTROLS** Breast Carcinoma, Prostate Carcinoma

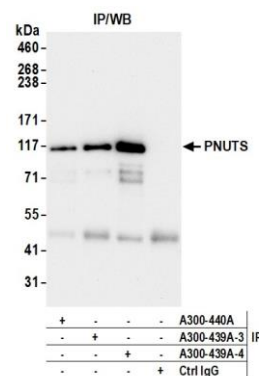
**ADDITIONAL INFO** <https://www.fortislifesciences.com/p/A300-439A>

Use the link above to view SDS, a current list of citations, and other product specific information.

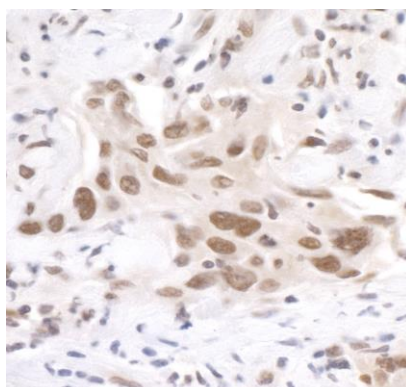
This document certifies that this product has met all of the quality control standards defined by Bethyl Laboratories, Inc.  
Michael Spencer, PhD Date: December 27, 2023



**Detection of human PNUTS by western blot.** *Samples:* Whole cell lysate (50 µg) from HEK293T, LNCaP, RKO, HeLa, and MCF-7 cells prepared using NETN lysis buffer. *Antibody:* Affinity purified rabbit anti-PNUTS antibody (A300-439A lot 4) used for WB at 0.1 µg/ml. *Detection:* Chemiluminescence with an exposure time of 30 seconds.



**Detection of human PNUTS by western blot of immunoprecipitates.** *Samples:* Whole cell lysate (1 mg per IP; 10% of IP loaded) from HEK293T cells prepared using NETN lysis buffer. *Antibodies:* Affinity purified rabbit anti-PNUTS antibody (A300-439A lot 4) used for IP at 6 µg per reaction. PNUTS was also immunoprecipitated by a previous lot of this antibody (A300-439A lot 3) and a second antibody against a different epitope of PNUTS (A300-440A). For blotting immunoprecipitated PNUTS, A300-439A was used at 0.4 µg/ml. *Detection:* Chemiluminescence with an exposure time of 30 seconds.



**Detection of human PNUTS by immunohistochemistry.** *Sample:* FFPE section of human breast carcinoma. *Antibody:* Affinity purified rabbit anti-PNUTS (A300-439A) used at a dilution of 1:1,000 (1 µg/ml). *Detection:* DAB