



# SZABO SCANDIC

Part of Europa Biosite

## Produktinformation



Forschungsprodukte & Biochemikalien



Zellkultur & Verbrauchsmaterial



Diagnostik & molekulare Diagnostik



Laborgeräte & Service

Weitere Information auf den folgenden Seiten!  
See the following pages for more information!



### Lieferung & Zahlungsart

siehe unsere [Liefer- und Versandbedingungen](#)

### Zuschläge

- Mindermengenzuschlag
- Trockeneiszuschlag
- Gefahrgutzuschlag
- Expressversand

### SZABO-SCANDIC Handels GmbH

Quellenstraße 110, A-1100 Wien

T. +43(0)1 489 3961-0

F. +43(0)1 489 3961-7

[mail@szabo-scandic.com](mailto:mail@szabo-scandic.com)

[www.szabo-scandic.com](http://www.szabo-scandic.com)

[linkedin.com/company/szaboscandic](https://www.linkedin.com/company/szaboscandic)



# Paxillin Antibody

Rabbit Polyclonal

Antigen Affinity Purified

Protein ID P49023

Catalog No. A300-444A-T

GeneID 5829

Lot No. A300-444A-T-1

**APPLICATIONS** WB, IP, IHC

**SPECIES REACTIVITY** Human

**PRESUMED REACTIVITY** Based on 100% sequence identity, this antibody is predicted to react with Orangutan

**AMOUNT** 10 µl

**CONCENTRATION** 200 µg/ml

**STORAGE/SHELF LIFE** 2 – 8°C / 1 year from date of receipt

**PHYSICAL STATE** Liquid

**BUFFER** Tris-buffered Saline containing 0.1% BSA and 0.09% Sodium Azide

**ISOTYPE** IgG

**ORIGIN** USA

**PRODUCTION PROCEDURES** Antibody was affinity purified using an epitope specific to Paxillin immobilized on solid support.

The epitope recognized by A300-444A-T maps to a region between residues 1 and 50 of human Paxillin using the numbering given in Swiss-Prot entry P49023 (GeneID 5829).

**APPLICATIONS** Centrifuge tube to remove product from lid. Optimal working dilutions should be determined experimentally by the investigator. Prepare working dilution immediately before use.

Western Blot 1:5,000 – 1:20,000

Immunoprecipitation 1 – 5 µg/mg lysate

Immunohistochemistry 1:100 – 1:500. Epitope retrieval with Tris-EDTA pH 9.0 is recommended for FFPE tissue sections.

**ADDITIONAL INFO** <https://www.bethyl.com/product/A300-444A-T>

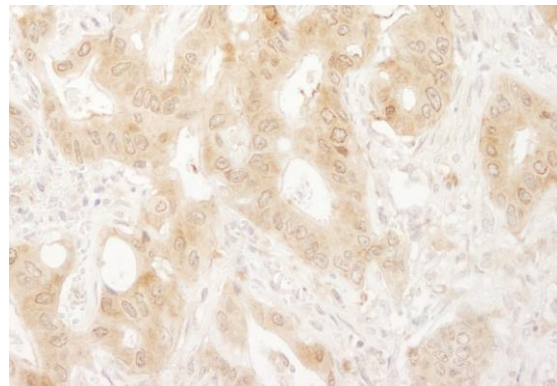
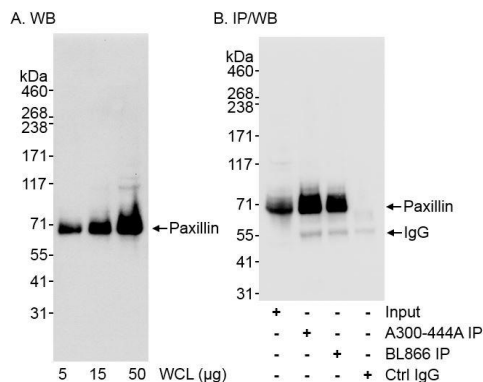
Use the link above to view SDS, a current list of citations, and other product specific information.

IP-western blot protocol: [https://www.bethyl.com/content/protocol\\_IP\\_WB](https://www.bethyl.com/content/protocol_IP_WB)

This document certifies that this product has met all of the quality control standards defined by Bethyl Laboratories, Inc.

Michael Spencer, PhD

Date: June 6, 2022



**Detection of human Paxillin by western blot and immunoprecipitation.** *Samples:* Whole cell lysate (5, 15 and 50 μg for WB; 1 mg for IP) from HeLa cells. *Antibodies:* Affinity purified rabbit anti-Paxillin antibody A300-444A (lot A300-444A-1) used at 0.04 μg/ml for WB (A and B) and at 3 μg/mg lysate for IP (B). Paxillin was also immunoprecipitated with rabbit anti-Paxillin antibody BL866 using 3 μg/mg lysate. immunoprecipitation reactions were controlled using normal rabbit IgG (Ctrl IgG). *Detection:* Chemiluminescence with exposure times of 10 seconds.

**Detection of human Paxillin by immunohistochemistry.** *Sample:* FFPE section of human non-small cell lung cancer. *Antibody:* Affinity purified rabbit anti-Paxillin (Cat. No. A300-444A Lot1) used at a dilution of 1:200 (1 μg/ml). *Detection:* DAB