



# SZABO SCANDIC

Part of Europa Biosite

## Produktinformation



Forschungsprodukte & Biochemikalien



Zellkultur & Verbrauchsmaterial



Diagnostik & molekulare Diagnostik



Laborgeräte & Service

Weitere Information auf den folgenden Seiten!  
See the following pages for more information!



### Lieferung & Zahlungsart

siehe unsere [Liefer- und Versandbedingungen](#)

### Zuschläge

- Mindermengenzuschlag
- Trockeneiszuschlag
- Gefahrgutzuschlag
- Expressversand

### SZABO-SCANDIC HandelsgmbH

Quellenstraße 110, A-1100 Wien

T. +43(0)1 489 3961-0

F. +43(0)1 489 3961-7

[mail@szabo-scandic.com](mailto:mail@szabo-scandic.com)

[www.szabo-scandic.com](http://www.szabo-scandic.com)

[linkedin.com/company/szaboscandic](https://www.linkedin.com/company/szaboscandic) 

# DDB1 Antibody

Rabbit Polyclonal

Antigen Affinity Purified

Protein ID Q13289

Catalog No. A300-462A

GeneID 1642

Lot No. A300-462A-3



<b>APPLICATIONS</b>	WB, IP, IHC
<b>SPECIES REACTIVITY</b>	Human, Mouse
<b>PRESUMED REACTIVITY</b>	Based on 100% sequence identity, this antibody is predicted to react with Rat, X. laevis, Bovine and Orangutan
<b>AMOUNT</b>	100 µl
<b>CONCENTRATION</b>	200 µg/ml
<b>STORAGE/SHELF LIFE</b>	2 – 8° C / 1 year from date of receipt
<b>PHYSICAL STATE</b>	Liquid
<b>BUFFER</b>	Tris-buffered Saline containing 0.1% BSA and 0.09% Sodium Azide
<b>ISOTYPE</b>	IgG
<b>ORIGIN</b>	USA
<b>PRODUCTION PROCEDURES</b>	Antibody was affinity purified using an epitope specific to DDB1 immobilized on solid support.

The epitope recognized by A300-462A maps to a region between residue 1100 and the C-terminus (residue 1140) of human damage-specific DNA binding protein 1 using the numbering given in TrEMBL entry Q13289 (GeneID 1642).

Immunoglobulin concentration was determined by extinction coefficient: absorbance at 280 nm of 1.4 equals 1.0 mg of IgG.

**APPLICATIONS** Centrifuge tube to remove product from lid. Optimal working dilutions should be determined experimentally by the investigator. Prepare working dilution immediately before use.

Western Blot 1:2,000 – 1:10,000

Immunoprecipitation 2 – 5 µg/mg lysate

Immunohistochemistry 1:500 – 1:2,000. Epitope retrieval with citrate buffer pH 6.0 is recommended for FFPE tissue sections.

**APPLICATION NOTES** Western blot of immunoprecipitates performed using Normal Pig Serum (Cat. No. S100-020), Goat anti-Rabbit Light Chain HRP Conjugate (Cat. No. A120-113P) and 4-8% SDS-PAGE (link to IP-western blot protocol in Additional Info section below).

Western blot of lysates performed using standard western blot reagents and 4-8% SDS-PAGE.

**IHC HUMAN CONTROLS** Breast Carcinoma, Colon Carcinoma, Metastatic Lymph Node, Ovarian Carcinoma, Skin Basal Cell Carcinoma, Testicular Seminoma

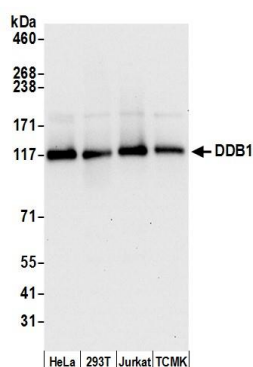
**IHC MOUSE CONTROLS** Colon Carcinoma CT26, Renal Cell Carcinoma, Squamous Cell Carcinoma

**ADDITIONAL INFO** <https://www.bethyl.com/product/A300-462A>

Use the link above to view SDS, a current list of citations, and other product specific information.

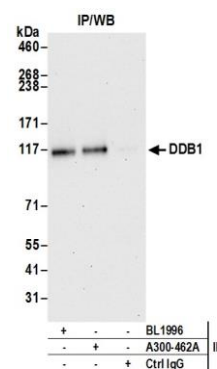
IP-western blot protocol: [https://www.bethyl.com/content/protocol\\_IP\\_WB](https://www.bethyl.com/content/protocol_IP_WB)

This document certifies that this product has met all of the quality control standards defined by Bethyl Laboratories, Inc.  
Eric McIntush, PhD | Chief Scientific Officer Date: June 21, 2019



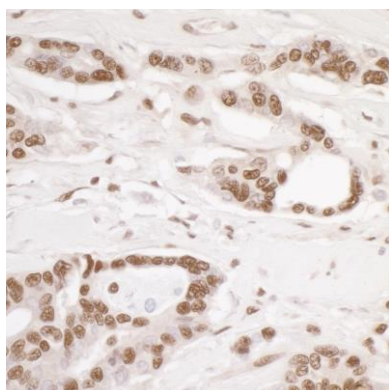
#### Detection of human and mouse DDB1 by western blot.

**Samples:** Whole cell lysate (15 µg) from HeLa, HEK293T, Jurkat, and mouse TCMK-1 cells prepared using NETN lysis buffer. **Antibody:** Affinity purified rabbit anti-DDB1 antibody A300-462A (lot A300-462A-3) used for WB at 0.1 µg/ml. **Detection:** Chemiluminescence with an exposure time of 10 seconds.



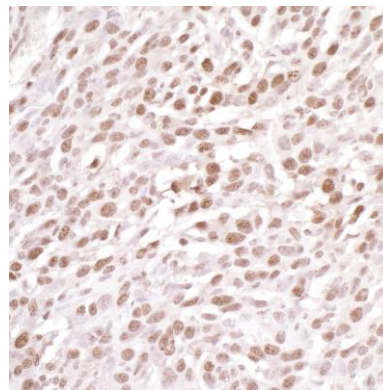
#### Detection of human DDB1 by western blot of immunoprecipitates.

**Samples:** Whole cell lysate (1.0 mg per IP reaction; 20% of IP loaded) from HeLa cells prepared using NETN lysis buffer. **Antibodies:** Affinity purified rabbit anti-DDB1 antibody A300-462A (lot A300-462A-3) used for IP at 3 µg per reaction. DDB1 was also immunoprecipitated by rabbit anti-DDB1 antibody BL1996. For blotting immunoprecipitated DDB1, A300-462A was used at 0.4 µg/ml. **Detection:** Chemiluminescence with an exposure time of 30 seconds.



#### Detection of human DDB1 by immunohistochemistry.

**Sample:** FFPE section of human ovarian carcinoma. **Antibody:** Affinity purified rabbit anti-DDB1 (Cat. No. A300-462A Lot3) used at a dilution of 1:1,000 (0.2 µg/ml). **Detection:** DAB



#### Detection of mouse DDB1 by immunohistochemistry.

**Sample:** FFPE section of mouse CT26 colon carcinoma. **Antibody:** Affinity purified rabbit anti-DDB1 (Cat. No. A300-462A Lot3) used at a dilution of 1:1,000 (0.2 µg/ml). **Detection:** DAB