



SZABO SCANDIC

Part of Europa Biosite

Produktinformation



Forschungsprodukte & Biochemikalien



Zellkultur & Verbrauchsmaterial



Diagnostik & molekulare Diagnostik



Laborgeräte & Service

Weitere Information auf den folgenden Seiten!
See the following pages for more information!



Lieferung & Zahlungsart

siehe unsere [Liefer- und Versandbedingungen](#)

Zuschläge

- Mindermengenzuschlag
- Trockeneiszuschlag
- Gefahrgutzuschlag
- Expressversand

SZABO-SCANDIC HandelsgmbH

Quellenstraße 110, A-1100 Wien

T. +43(0)1 489 3961-0

F. +43(0)1 489 3961-7

mail@szabo-scandic.com

www.szabo-scandic.com

[linkedin.com/company/szaboscandic](https://www.linkedin.com/company/szaboscandic) 

TSC2 Antibody

Rabbit Polyclonal

Antigen Affinity Purified

Protein ID P49815

Catalog No. A300-463A-T

GeneID 7249

Lot No. A300-463A-T-1

APPLICATIONS WB, IP

SPECIES REACTIVITY Human

AMOUNT 10 µl

CONCENTRATION 1000 µg/ml

STORAGE/SHELF LIFE 2 – 8°C / 1 year from date of receipt

PHYSICAL STATE Liquid

BUFFER Tris-citrate/phosphate buffer, pH 7 to 8 containing 0.09% Sodium Azide

ISOTYPE IgG

ORIGIN USA

PRODUCTION PROCEDURES Antibody was affinity purified using an epitope specific to TSC2 immobilized on solid support.

The epitope recognized by A300-463A-T maps to a region between residues 1750 and the C-terminus (residue 1807) of human Tuberous Sclerosis 2 using the numbering given in Swiss-Prot entry P49815 (GeneID 7249).

APPLICATIONS Centrifuge tube to remove product from lid. Optimal working dilutions should be determined experimentally by the investigator. Prepare working dilution immediately before use.

Western Blot 1:5,000 – 1:15,000

Immunoprecipitation 2 – 5 µg/mg lysate

ADDITIONAL INFO <https://www.bethyl.com/product/A300-463A-T>

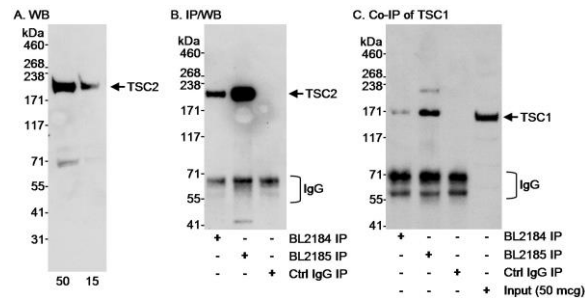
Use the link above to view SDS, a current list of citations, and other product specific information.

IP-western blot protocol: https://www.bethyl.com/content/protocol_IP_WB

This document certifies that this product has met all of the quality control standards defined by Bethyl Laboratories, Inc.

Michael Spencer, PhD

Date: June 6, 2022



Detection of human TSC2 by western blot and immunoprecipitation and Co-IP of TSC1 with TSC2.

Samples: Whole cell lysate (15 and 50 µg for WB, A; 1 mg for IP, 25% of IP loaded, B and C) from HeLa cells.

Antibodies: Affinity purified rabbit anti-TSC2 antibody BL2185 (Cat. No. A300-463A) used at 0.1 µg/ml for WB (A) and 3 µg/mg lysate for IP (B and C). TSC2 was also immunoprecipitated with BL2184, which is to an upstream epitope on TSC2, using 3 µg/mg lysate (B and C). immunoprecipitation reactions were controlled using normal rabbit IgG (Ctrl IgG). TSC1 was found to Co-IP with TSC2 by blotting TSC2 immunoprecipitates with rabbit anti-TSC1 antibody BL1601 (Cat. No. A300-316A) at 0.1 µg/ml. **Detection:** Chemiluminescence with an exposure time of 30 seconds (A, B and C).