



SZABO SCANDIC

Part of Europa Biosite

Produktinformation



Forschungsprodukte & Biochemikalien



Zellkultur & Verbrauchsmaterial



Diagnostik & molekulare Diagnostik



Laborgeräte & Service

Weitere Information auf den folgenden Seiten!
See the following pages for more information!



Lieferung & Zahlungsart

siehe unsere [Liefer- und Versandbedingungen](#)

Zuschläge

- Mindermengenzuschlag
- Trockeneiszuschlag
- Gefahrgutzuschlag
- Expressversand

SZABO-SCANDIC HandelsgmbH

Quellenstraße 110, A-1100 Wien

T. +43(0)1 489 3961-0

F. +43(0)1 489 3961-7

mail@szabo-scandic.com

www.szabo-scandic.com

[linkedin.com/company/szaboscandic](https://www.linkedin.com/company/szaboscandic) 

TSC2 Antibody

Rabbit Polyclonal

Antigen Affinity Purified

Protein ID P49815

Catalog No. A300-463A

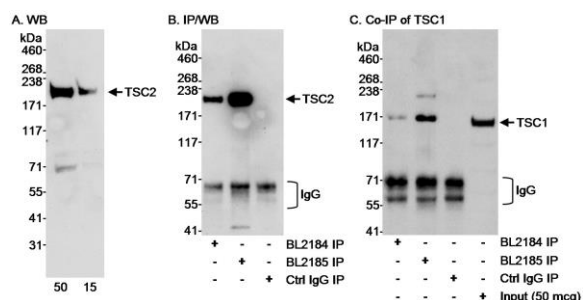
GeneID 7249

Lot No. A300-463A-1



APPLICATIONS	WB, IP
SPECIES REACTIVITY	Human
AMOUNT	100 µl
CONCENTRATION	1000 µg/ml
STORAGE/SHELF LIFE	2 – 8° C / 1 year from date of receipt
PHYSICAL STATE	Liquid
BUFFER	Tris-citrate/phosphate buffer, pH 7 to 8 containing 0.09% Sodium Azide
ISOTYPE	IgG
ORIGIN	USA
PRODUCTION PROCEDURES	<p>Antibody was affinity purified using an epitope specific to TSC2 immobilized on solid support.</p> <p>The epitope recognized by A300-463A maps to a region between residues 1750 and the C-terminus (residue 1807) of human Tuberous Sclerosis 2 using the numbering given in Swiss-Prot entry P49815 (GeneID 7249).</p> <p>Immunoglobulin concentration was determined by extinction coefficient: absorbance at 280 nm of 1.4 equals 1.0 mg of IgG.</p>
APPLICATIONS	<p>Centrifuge tube to remove product from lid. Optimal working dilutions should be determined experimentally by the investigator. Prepare working dilution immediately before use.</p> <p>Western Blot 1:5,000 – 1:15,000</p> <p>Immunoprecipitation 2 – 5 µg/mg lysate</p>
APPLICATION NOTES	<p>Western blot of immunoprecipitates performed using Normal Pig Serum (Cat. No. S100-020), Goat anti-Rabbit Light Chain HRP Conjugate (Cat. No. A120-113P) and 4-8% SDS-PAGE (link to IP-western blot protocol in Additional Info section below).</p> <p>Western blot of lysates performed using standard western blot reagents and 4-8% SDS-PAGE.</p>
ADDITIONAL INFO	<p>https://www.bethyl.com/product/A300-463A</p> <p>Use the link above to view SDS, a current list of citations, and other product specific information.</p> <p>IP-western blot protocol: https://www.bethyl.com/content/protocol_IP_WB</p>

This document certifies that this product has met all of the quality control standards defined by Bethyl Laboratories, Inc.
Eric McIntush, PhD | Chief Scientific Officer Date: June 21, 2019



Detection of human TSC2 by western blot and immunoprecipitation and Co-IP of TSC1 with TSC2.

Samples: Whole cell lysate (15 and 50 µg for WB, A; 1 mg for IP, 25% of IP loaded, B and C) from HeLa cells.

Antibodies: Affinity purified rabbit anti-TSC2 antibody BL2185 (Cat. No. A300-463A) used at 0.1 µg/ml for WB (A) and 3 µg/mg lysate for IP (B and C). TSC2 was also immunoprecipitated with BL2184, which is to an upstream epitope on TSC2, using 3 µg/mg lysate (B and C). immunoprecipitation reactions were controlled using normal rabbit IgG (Ctrl IgG). TSC1 was found to Co-IP with TSC2 by blotting TSC2 immunoprecipitates with rabbit anti-TSC1 antibody BL1601 (Cat. No. A300-316A) at 0.1 µg/ml. **Detection:** Chemiluminescence with an exposure time of 30 seconds (A, B and C).