



SZABO SCANDIC

Part of Europa Biosite

Produktinformation



Forschungsprodukte & Biochemikalien



Zellkultur & Verbrauchsmaterial



Diagnostik & molekulare Diagnostik



Laborgeräte & Service

Weitere Information auf den folgenden Seiten!
See the following pages for more information!



Lieferung & Zahlungsart

siehe unsere [Liefer- und Versandbedingungen](#)

Zuschläge

- Mindermengenzuschlag
- Trockeneiszuschlag
- Gefahrgutzuschlag
- Expressversand

SZABO-SCANDIC HandelsgmbH

Quellenstraße 110, A-1100 Wien

T. +43(0)1 489 3961-0

F. +43(0)1 489 3961-7

mail@szabo-scandic.com

www.szabo-scandic.com

[linkedin.com/company/szaboscandic](https://www.linkedin.com/company/szaboscandic) 

MST1-2/STK3-4 Antibody

Rabbit Polyclonal

Antigen Affinity Purified

Protein ID Q13043

Catalog No. A300-466A

GeneID 6789

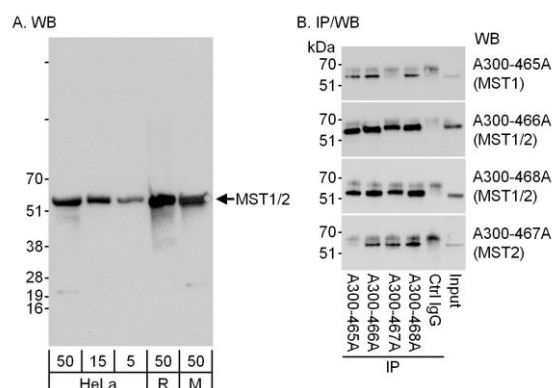
Lot No. A300-466A-1



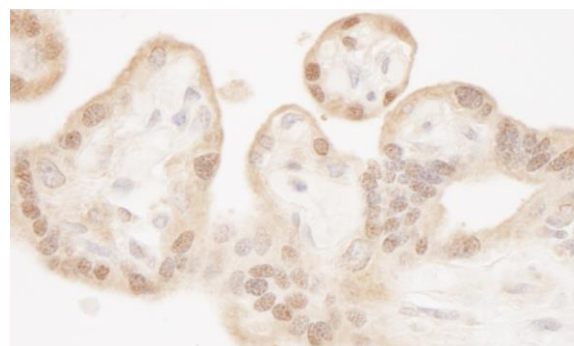
APPLICATIONS	WB, IP, IHC						
SPECIES REACTIVITY	Human, Mouse						
PRESUMED REACTIVITY	Based on 100% sequence identity, this antibody is predicted to react with Chicken, Bovine and Monkey						
AMOUNT	100 µl						
CONCENTRATION	1000 µg/ml						
STORAGE/SHELF LIFE	2 – 8° C / 1 year from date of receipt						
PHYSICAL STATE	Liquid						
BUFFER	Tris-citrate/phosphate buffer, pH 7 to 8 containing 0.09% Sodium Azide						
ISOTYPE	IgG						
ORIGIN	USA						
PRODUCTION PROCEDURES	<p>Antibody was affinity purified using an epitope specific to MST1 and MST2 immobilized on solid support.</p> <p>The epitope recognized by A300-466A maps to the C-terminus of human Mammalian Sterile 20-like 1 (Serine/Threonine Kinase 4) using the numbering given in Swiss Prot entry Q13043 (GeneID 6789). The epitope is highly conserved with MST2/STK3. Consequently, A300-466A also recognizes this homolog.</p> <p>Immunoglobulin concentration was determined by extinction coefficient: absorbance at 280 nm of 1.4 equals 1.0 mg of IgG.</p>						
APPLICATIONS	<p>Centrifuge tube to remove product from lid. Optimal working dilutions should be determined experimentally by the investigator. Prepare working dilution immediately before use.</p> <table><tr><td>Western Blot</td><td>1:5,000 – 1:15,000</td></tr><tr><td>Immunoprecipitation</td><td>2 – 5 µg/mg lysate</td></tr><tr><td>Immunohistochemistry</td><td>1:500 – 1:2,000. Epitope retrieval with Tris-EDTA pH 9.0 is recommended for FFPE tissue sections.</td></tr></table>	Western Blot	1:5,000 – 1:15,000	Immunoprecipitation	2 – 5 µg/mg lysate	Immunohistochemistry	1:500 – 1:2,000. Epitope retrieval with Tris-EDTA pH 9.0 is recommended for FFPE tissue sections.
Western Blot	1:5,000 – 1:15,000						
Immunoprecipitation	2 – 5 µg/mg lysate						
Immunohistochemistry	1:500 – 1:2,000. Epitope retrieval with Tris-EDTA pH 9.0 is recommended for FFPE tissue sections.						
APPLICATION NOTES	<p>Western blot of immunoprecipitates performed using Normal Pig Serum (Cat. No. S100-020), Goat anti-Rabbit Light Chain HRP Conjugate (Cat. No. A120-113P) and 4-20% SDS-PAGE (link to IP-western blot protocol in Additional Info section below).</p> <p>Western blot of lysates performed using standard western blot reagents and 4-20% SDS-PAGE.</p>						
IHC HUMAN CONTROLS	Colon Carcinoma, Placenta						
ADDITIONAL INFO	<p>https://www.bethyl.com/product/A300-466A</p> <p>Use the link above to view SDS, a current list of citations, and other product specific information.</p> <p>IP-western blot protocol: https://www.bethyl.com/content/protocol_IP_WB</p>						

This document certifies that this product has met all of the quality control standards defined by Bethyl Laboratories, Inc.
Eric McIntush, PhD | Chief Scientific Officer

Date: June 21, 2019



Detection of MST1 and MST2 by western blot and immunoprecipitation. *Samples:* A) Whole cell lysate from HeLa (5, 15 and 50 µg), Ramos (R, 50 µg) and mouse NIH 3T3 (M, 50 µg) cells. B) Whole cell lysate (1 mg/IP reaction; 1/4 of reaction loaded/gel) from HeLa cells. *Antibodies:* Affinity purified rabbit anti-MST1/2 antibody A300-466A used at 0.1 µg/ml for WB (A and B) and 3 µg/mg lysate for IP (B). MST1 was immunoprecipitated using MST1 antibody A300-465A. MST2 was immunoprecipitated using MST2 antibody A300-467A. MST1 and MST2 were simultaneously immunoprecipitated using MST1/2 antibodies A300-466A and A300-468A. *Detection:* Chemiluminescence with an exposure times of 3 seconds (A and B). A300-466A recognized MST1 in IP from A300-465A and MST2 in IP from A300-467A.



Detection of human MST1 and MST2 by immunohistochemistry. *Sample:* FFPE section of human placenta. *Antibody:* Affinity purified rabbit anti-MST1/2 (Cat. No. A300-466A Lot1) used at a dilution of 1:1,000 (1 µg/ml). *Detection:* DAB