



SZABO SCANDIC

Part of Europa Biosite

Produktinformation



Forschungsprodukte & Biochemikalien



Zellkultur & Verbrauchsmaterial



Diagnostik & molekulare Diagnostik



Laborgeräte & Service

Weitere Information auf den folgenden Seiten!
See the following pages for more information!



Lieferung & Zahlungsart

siehe unsere [Liefer- und Versandbedingungen](#)

Zuschläge

- Mindermengenzuschlag
- Trockeneiszuschlag
- Gefahrgutzuschlag
- Expressversand

SZABO-SCANDIC HandelsgmbH

Quellenstraße 110, A-1100 Wien

T. +43(0)1 489 3961-0

F. +43(0)1 489 3961-7

mail@szabo-scandic.com

www.szabo-scandic.com

[linkedin.com/company/szaboscandic](https://www.linkedin.com/company/szaboscandic) 

CSE1 Antibody

Rabbit Polyclonal

Antigen Affinity Purified

Protein ID NP_001307.2

Catalog No. A300-472A-T

GeneID 1434

Lot No. A300-472A-T-2

| | |
|------------------------------|--|
| APPLICATIONS | WB, IP, IHC |
| SPECIES REACTIVITY | Human, Mouse |
| PRESUMED REACTIVITY | Based on 100% sequence identity, this antibody is predicted to react with Bovine |
| AMOUNT | 10 µl |
| CONCENTRATION | 1000 µg/ml |
| STORAGE/SHELF LIFE | 2 – 8°C / 1 year from date of receipt |
| PHYSICAL STATE | Liquid |
| BUFFER | Tris-citrate/phosphate buffer, pH 7 to 8 containing 0.09% Sodium Azide |
| ISOTYPE | IgG |
| ORIGIN | USA |
| PRODUCTION PROCEDURES | Antibody was affinity purified using an epitope specific to CSE1 immobilized on solid support. |

The epitope recognized by A300-472A-T maps to a region between residues 1 and 50 of human Chromosome Segregation-1 using the numbering given in entry NP_001307.2 (GeneID 1434).

APPLICATIONS Centrifuge tube to remove product from lid. Optimal working dilutions should be determined experimentally by the investigator. Prepare working dilution immediately before use.

Western Blot 1:1,000 – 1:5,000

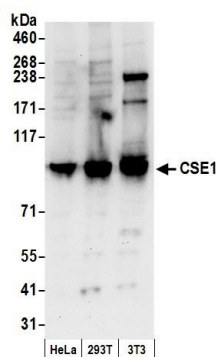
Immunoprecipitation 2 – 10 µg/mg lysate

Immunohistochemistry 1:2,000 – 1:10,000. Epitope retrieval with citrate buffer pH 6.0 is recommended for FFPE tissue sections.

ADDITIONAL INFO <https://www.bethyl.com/product/A300-472A-T>

Use the link above to view SDS, a current list of citations, and other product specific information.
IP-western blot protocol: https://www.bethyl.com/content/protocol_IP_WB

This document certifies that this product has met all of the quality control standards defined by Bethyl Laboratories, Inc.
Michael Spencer, PhD Date: June 6, 2022

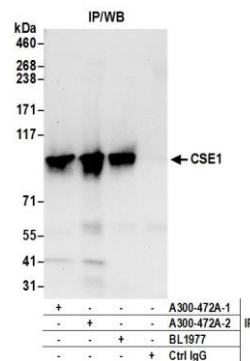


Detection of human and mouse CSE1 by western blot.

Samples: Whole cell lysate (50 µg) from HeLa, HEK293T, and mouse NIH 3T3 cells prepared using NETN lysis buffer.

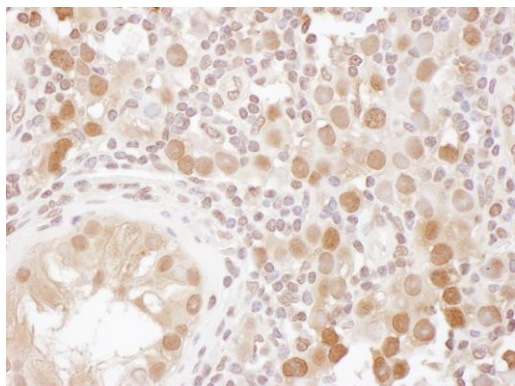
Antibody: Affinity purified rabbit anti-CSE1 antibody A300-472A (lot A300-472A-2) used for WB at 0.4 µg/ml.

Detection: Chemiluminescence with an exposure time of 10 seconds.



Detection of human CSE1 by western blot of immunoprecipitates.

Samples: Whole cell lysate (0.5 or 1.0 mg per IP reaction; 20% of IP loaded) from HEK293T cells prepared using NETN lysis buffer. **Antibody:** Affinity purified rabbit anti-CSE1 antibody A300-472A (lot A300-472A-2) used for IP at 6 µg per reaction. CSE1 was also immunoprecipitated by a previous lot of this antibody (A300-472A-1) and rabbit anti-CSE1 antibody BL1977. For blotting immunoprecipitated CSE1, A300-472A was used at 1 µg/ml. **Detection:** Chemiluminescence with an exposure time of 10 seconds.

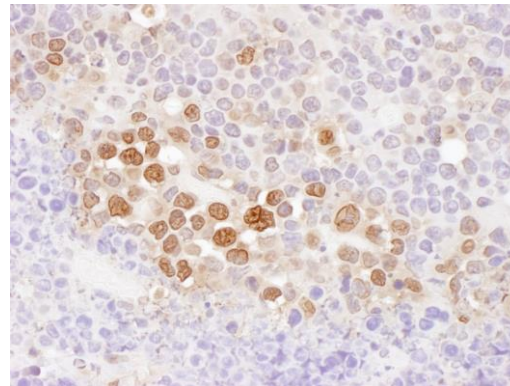


Detection of human CSE1 by immunohistochemistry.

Sample: FFPE section of human testicular seminoma.

Antibody: Affinity purified rabbit anti-CSE1 (Cat. No. A300-472A Lot2) used at a dilution of 1:5,000 (0.2µg/ml).

Detection: DAB



Detection of mouse CSE1 by immunohistochemistry.

Sample: FFPE section of mouse plasmacytoma. **Antibody:** Affinity purified rabbit anti-CSE1 (Cat. No. A300-472A Lot2) used at a dilution of 1:5,000 (0.2µg/ml). **Detection:** DAB