



SZABO SCANDIC

Part of Europa Biosite

Produktinformation



Forschungsprodukte & Biochemikalien



Zellkultur & Verbrauchsmaterial



Diagnostik & molekulare Diagnostik



Laborgeräte & Service

Weitere Information auf den folgenden Seiten!
See the following pages for more information!



Lieferung & Zahlungsart

siehe unsere [Liefer- und Versandbedingungen](#)

Zuschläge

- Mindermengenzuschlag
- Trockeneiszuschlag
- Gefahrgutzuschlag
- Expressversand

SZABO-SCANDIC HandelsgmbH

Quellenstraße 110, A-1100 Wien

T. +43(0)1 489 3961-0

F. +43(0)1 489 3961-7

mail@szabo-scandic.com

www.szabo-scandic.com

[linkedin.com/company/szaboscandic](https://www.linkedin.com/company/szaboscandic)



LATS1 Antibody

Rabbit Polyclonal

Antigen Affinity Purified

Protein ID O95835

Catalog No. A300-477A-T

GenelD 9113

Lot No. A300-477A-T-1

APPLICATIONS WB, IP

SPECIES REACTIVITY Human, Mouse

AMOUNT 10 µl

CONCENTRATION 200 µg/ml

STORAGE/SHELF LIFE 2 – 8°C / 1 year from date of receipt

PHYSICAL STATE Liquid

BUFFER Tris-buffered Saline containing 0.1% BSA and 0.09% Sodium Azide

ISOTYPE IgG

ORIGIN USA

PRODUCTION PROCEDURES Antibody was affinity purified using an epitope specific to LATS1 (WARTS) immobilized on solid support.

The epitope recognized by A300-477A-T maps to a region between residues 50 and 100 of human Large Tumor Suppressor homolog 1 using the numbering given in SwissProt entry O95835 (GenelD 9113).

APPLICATIONS Centrifuge tube to remove product from lid. Optimal working dilutions should be determined experimentally by the investigator. Prepare working dilution immediately before use.

Western Blot 1:5,000 – 1:15,000

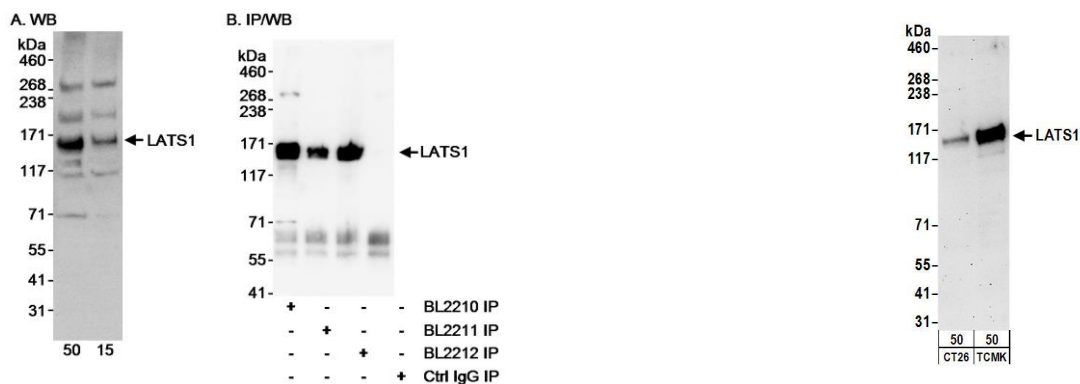
Immunoprecipitation 2 – 5 µg/mg lysate

ADDITIONAL INFO <https://www.bethyl.com/product/A300-477A-T>

Use the link above to view SDS, a current list of citations, and other product specific information.

IP-western blot protocol: https://www.bethyl.com/content/protocol_IP_WB

This document certifies that this product has met all of the quality control standards defined by Bethyl Laboratories, Inc.
Michael Spencer, PhD Date: June 6, 2022



Detection of human LATS1 by western blot and immunoprecipitation. *Samples:* Whole cell lysate (15 and 50 µg for WB; 1 mg for IP, 1/4 of IP loaded/lane) from HeLa Cells. *Antibodies:* Affinity purified rabbit anti-LATS1 antibody BL2210 (Cat. No. A300-477A) used at 0.02 (A) and 0.1 (B) µg/ml for WB and at 3 µg/mg lysate for IP (B). LATS1 was also immunoprecipitated with LATS1 antibodies BL2211 and BL2212 (Cat. No. A300-478A) using 3 µg/mg lysate. *Detection:* Chemiluminescence with an exposure time of 10 seconds (A and B).

Detection of mouse LATS1 by western blot. *Samples:* Whole cell lysate (50 µg) from CT26.WT and TCMK-1 cells. *Antibodies:* Affinity purified rabbit anti-LATS1 antibody A300-477A (lot A300-477A-1) used for WB at 0.2 µg/ml. *Detection:* Chemiluminescence with an exposure time of 3 minutes.