



# SZABO SCANDIC

Part of Europa Biosite

## Produktinformation



Forschungsprodukte & Biochemikalien



Zellkultur & Verbrauchsmaterial



Diagnostik & molekulare Diagnostik



Laborgeräte & Service

Weitere Information auf den folgenden Seiten!  
See the following pages for more information!



### Lieferung & Zahlungsart

siehe unsere [Liefer- und Versandbedingungen](#)

### Zuschläge

- Mindermengenzuschlag
- Trockeneiszuschlag
- Gefahrgutzuschlag
- Expressversand

### SZABO-SCANDIC Handels GmbH

Quellenstraße 110, A-1100 Wien

T. +43(0)1 489 3961-0

F. +43(0)1 489 3961-7

[mail@szabo-scandic.com](mailto:mail@szabo-scandic.com)

[www.szabo-scandic.com](http://www.szabo-scandic.com)

[linkedin.com/company/szaboscandic](https://www.linkedin.com/company/szaboscandic) 

# LATS1 Antibody

Rabbit Polyclonal

Antigen Affinity Purified

Protein ID O95835

Catalog No. A300-477A

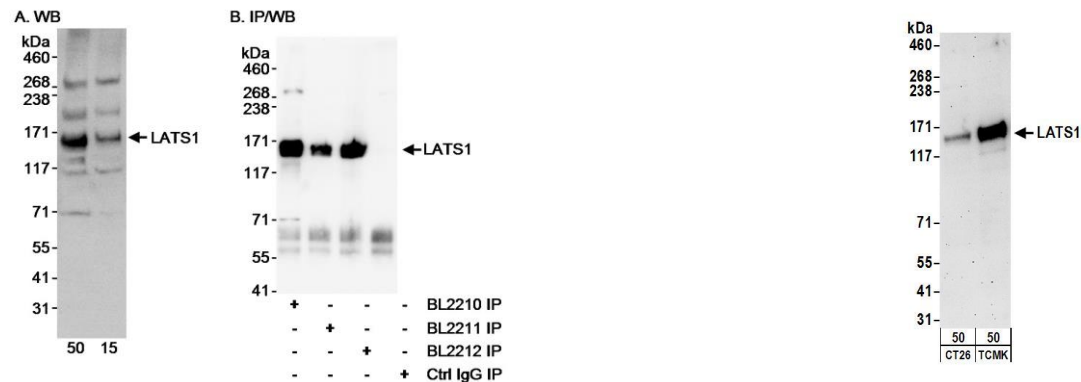
GeneID 9113

Lot No. A300-477A-1



APPLICATIONS	WB, IP
SPECIES REACTIVITY	Human, Mouse
AMOUNT	100 µl
CONCENTRATION	200 µg/ml
STORAGE/SHELF LIFE	2 – 8° C / 1 year from date of receipt
PHYSICAL STATE	Liquid
BUFFER	Tris-buffered Saline containing 0.1% BSA and 0.09% Sodium Azide
ISOTYPE	IgG
ORIGIN	USA
PRODUCTION PROCEDURES	<p>Antibody was affinity purified using an epitope specific to LATS1 (WARTS) immobilized on solid support.</p> <p>The epitope recognized by A300-477A maps to a region between residues 50 and 100 of human Large Tumor Suppressor homolog 1 using the numbering given in SwissProt entry O95835 (GeneID 9113).</p> <p>Immunoglobulin concentration was determined by extinction coefficient: absorbance at 280 nm of 1.4 equals 1.0 mg of IgG.</p>
APPLICATIONS	<p>Centrifuge tube to remove product from lid. Optimal working dilutions should be determined experimentally by the investigator. Prepare working dilution immediately before use.</p> <p>Western Blot 1:5,000 – 1:15,000</p> <p>Immunoprecipitation 2 – 5 µg/mg lysate</p>
APPLICATION NOTES	<p>Western blot of immunoprecipitates performed using Normal Pig Serum (Cat. No. S100-020), Goat anti-Rabbit Light Chain HRP Conjugate (Cat. No. A120-113P) and 4-8% SDS-PAGE (link to IP-western blot protocol in Additional Info section below).</p> <p>Western blot of lysates performed using standard western blot reagents and 4-8% SDS-PAGE.</p>
ADDITIONAL INFO	<p><a href="https://www.bethyl.com/product/A300-477A">https://www.bethyl.com/product/A300-477A</a></p> <p>Use the link above to view SDS, a current list of citations, and other product specific information.</p> <p>IP-western blot protocol: <a href="https://www.bethyl.com/content/protocol_IP_WB">https://www.bethyl.com/content/protocol_IP_WB</a></p>

This document certifies that this product has met all of the quality control standards defined by Bethyl Laboratories, Inc.  
Eric McIntush, PhD | Chief Scientific Officer Date: June 21, 2019



**Detection of human LATS1 by western blot and immunoprecipitation.** *Samples:* Whole cell lysate (15 and 50 µg for WB; 1 mg for IP, 1 / 4 of IP loaded/lane) from HeLa Cells. *Antibodies:* Affinity purified rabbit anti-LATS1 antibody BL2210 (Cat. No. A300-477A) used at 0.02 (A) and 0.1 (B) µg/ml for WB and at 3 µg/mg lysate for IP (B). LATS1 was also immunoprecipitated with LATS1 antibodies BL2211 and BL2212 (Cat. No. A300-478A) using 3 µg/mg lysate. *Detection:* Chemiluminescence with an exposure time of 10 seconds (A and B).

**Detection of mouse LATS1 by western blot.** *Samples:* Whole cell lysate (50 µg) from CT26.WT and TCMK-1 cells. *Antibodies:* Affinity purified rabbit anti-LATS1 antibody A300-477A (lot A300-477A-1) used for WB at 0.2 µg/ml. *Detection:* Chemiluminescence with an exposure time of 3 minutes.