



SZABO SCANDIC

Part of Europa Biosite

Produktinformation



Forschungsprodukte & Biochemikalien



Zellkultur & Verbrauchsmaterial



Diagnostik & molekulare Diagnostik



Laborgeräte & Service

Weitere Information auf den folgenden Seiten!
See the following pages for more information!



Lieferung & Zahlungsart

siehe unsere [Liefer- und Versandbedingungen](#)

Zuschläge

- Mindermengenzuschlag
- Trockeneiszuschlag
- Gefahrgutzuschlag
- Expressversand

SZABO-SCANDIC HandelsgmbH

Quellenstraße 110, A-1100 Wien

T. +43(0)1 489 3961-0

F. +43(0)1 489 3961-7

mail@szabo-scandic.com

www.szabo-scandic.com

[linkedin.com/company/szaboscandic](https://www.linkedin.com/company/szaboscandic) 

KPNB1 Antibody

Rabbit Polyclonal

Antigen Affinity Purified

Protein ID NP_002256.2

Catalog No. A300-482A-T

GeneID 3837

Lot No. A300-482A-T-1

APPLICATIONS WB, IP

SPECIES REACTIVITY Human, Mouse

PRESUMED REACTIVITY Based on 100% sequence identity, this antibody is predicted to react with Rat

AMOUNT 10 µl

CONCENTRATION 1000 µg/ml

STORAGE/SHELF LIFE 2 – 8°C / 1 year from date of receipt

PHYSICAL STATE Liquid

BUFFER Tris-citrate/phosphate buffer, pH 7 to 8 containing 0.09% Sodium Azide

ISOTYPE IgG

ORIGIN USA

PRODUCTION PROCEDURES Antibody was affinity purified using an epitope specific to KPNB1 immobilized on solid support.

The epitope recognized by A300-482A-T maps to a region between residue 825 and the C-terminus (residue 876) of human Karyopherin (importin) beta 1 using the numbering given in entry NP_002256.2 (GeneID 3837).

APPLICATIONS Centrifuge tube to remove product from lid. Optimal working dilutions should be determined experimentally by the investigator. Prepare working dilution immediately before use.

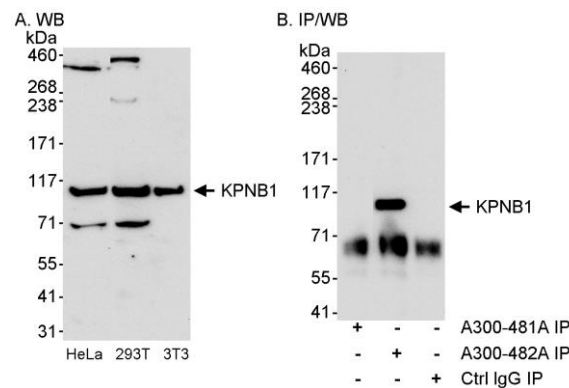
Western Blot 1:5,000 – 1:15,000

Immunoprecipitation 2 – 5 µg/mg lysate

ADDITIONAL INFO <https://www.bethyl.com/product/A300-482A-T>

Use the link above to view SDS, a current list of citations, and other product specific information. IP-western blot protocol: https://www.bethyl.com/content/protocol_IP_WB

This document certifies that this product has met all of the quality control standards defined by Bethyl Laboratories, Inc.
Michael Spencer, PhD Date: June 6, 2022



Detection of KPNB1 by western blot and immunoprecipitation. *Samples:* A. Whole cell lysate (50 µg) from HeLa, HEK293T and mouse 3T3 cells. B. Whole cell lysate (1 mg for IP, 1 / 4 of IP loaded/lane) from HeLa cells. *Antibodies:* Affinity purified rabbit anti-KPNB1 antibody A300-482A used at 0.1 µg/ml for WB (A and B) and at 3 µg/mg lysate for IP (B). immunoprecipitation of KPNB1 was unsuccessful when using rabbit anti-KPNB1 antibody A300-481A at 3 µg/mg lysate. *Detection:* Chemiluminescence with an exposure time of 30 seconds (A and B).