



SZABO SCANDIC

Part of Europa Biosite

Produktinformation



Forschungsprodukte & Biochemikalien



Zellkultur & Verbrauchsmaterial



Diagnostik & molekulare Diagnostik



Laborgeräte & Service

Weitere Information auf den folgenden Seiten!
See the following pages for more information!



Lieferung & Zahlungsart

siehe unsere [Liefer- und Versandbedingungen](#)

Zuschläge

- Mindermengenzuschlag
- Trockeneiszuschlag
- Gefahrgutzuschlag
- Expressversand

SZABO-SCANDIC Handels GmbH

Quellenstraße 110, A-1100 Wien

T. +43(0)1 489 3961-0

F. +43(0)1 489 3961-7

mail@szabo-scandic.com

www.szabo-scandic.com

[linkedin.com/company/szaboscandic](https://www.linkedin.com/company/szaboscandic)



RCH1 /KPNA2 Antibody

Rabbit Polyclonal

Antigen Affinity Purified

Protein ID NP_002257.1

Catalog No. A300-483A

GeneID 3838

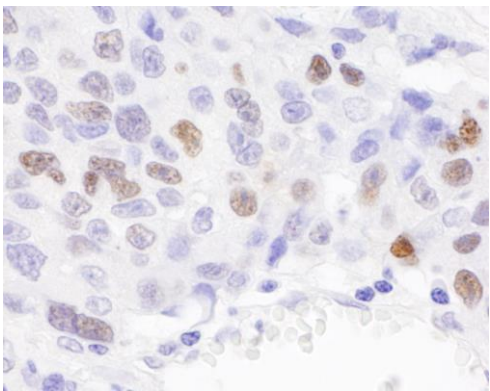
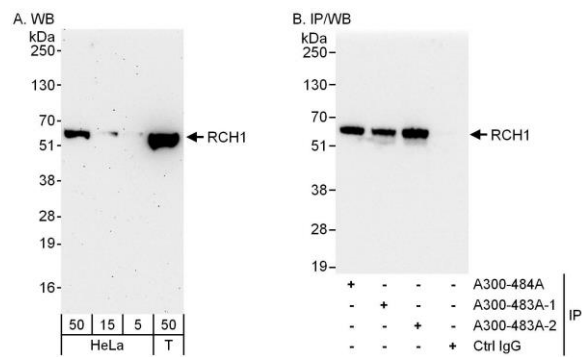
Lot No. A300-483A-2



APPLICATIONS	WB, IP, IHC						
SPECIES REACTIVITY	Human						
AMOUNT	100 µl						
CONCENTRATION	1000 µg/ml						
STORAGE/SHELF LIFE	2 – 8° C / 1 year from date of receipt						
PHYSICAL STATE	Liquid						
BUFFER	Tris-citrate/phosphate buffer, pH 7 to 8 containing 0.09% Sodium Azide						
ISOTYPE	IgG						
ORIGIN	USA						
PRODUCTION PROCEDURES	<p>Antibody was affinity purified using an epitope specific to RCH1 /KPNA2 immobilized on solid support.</p> <p>The epitope recognized by A300-483A maps to a region between residues 1 and 50 of human RAG cohort 1 (Karyopherin Alpha 2) using the numbering given in entry NP_002257.1 (GeneID 3838).</p> <p>Immunoglobulin concentration was determined by extinction coefficient: absorbance at 280 nm of 1.4 equals 1.0 mg of IgG.</p>						
APPLICATIONS	<p>Centrifuge tube to remove product from lid. Optimal working dilutions should be determined experimentally by the investigator. Prepare working dilution immediately before use.</p> <table><tr><td>Western Blot</td><td>1:5,000 – 1:15,000</td></tr><tr><td>Immunoprecipitation</td><td>2 – 10 µg/mg lysate</td></tr><tr><td>Immunohistochemistry</td><td>1:500 – 1:2,000. Epitope retrieval with citrate buffer pH 6.0 is recommended for FFPE tissue sections.</td></tr></table>	Western Blot	1:5,000 – 1:15,000	Immunoprecipitation	2 – 10 µg/mg lysate	Immunohistochemistry	1:500 – 1:2,000. Epitope retrieval with citrate buffer pH 6.0 is recommended for FFPE tissue sections.
Western Blot	1:5,000 – 1:15,000						
Immunoprecipitation	2 – 10 µg/mg lysate						
Immunohistochemistry	1:500 – 1:2,000. Epitope retrieval with citrate buffer pH 6.0 is recommended for FFPE tissue sections.						
APPLICATION NOTES	Western blot of immunoprecipitates performed using Normal Pig Serum (Cat. No. S100-020), Goat anti-Rabbit Light Chain HRP Conjugate (Cat. No. A120-113P) and 4-20% SDS-PAGE (link to IP-western blot protocol in Additional Info section below).						
IHC HUMAN CONTROLS	Western blot of lysates performed using standard western blot reagents and 4-20% SDS-PAGE. Bladder Cell Carcinoma, Breast Carcinoma, Laryngeal Squamous Cell Carcinoma, Non-Small Cell Lung Cancer, Ovarian Carcinoma, Stomach Adenocarcinoma						
ADDITIONAL INFO	<p>https://www.bethyl.com/product/A300-483A</p> <p>Use the link above to view SDS, a current list of citations, and other product specific information.</p> <p>IP-western blot protocol: https://www.bethyl.com/content/protocol_IP_WB</p>						

This document certifies that this product has met all of the quality control standards defined by Bethyl Laboratories, Inc.
Eric McIntush, PhD | Chief Scientific Officer

Date: June 21, 2019



Detection of human RCH1 by western blot and immunoprecipitation. *Samples:* Whole cell lysate from HeLa (5, 15 and 50 µg for WB; 1 mg for IP, 20% of IP loaded) and HEK293T (T; 50 µg) cells. *Antibodies:* Affinity purified rabbit anti-RCH1 antibody A300-483A (lot number A300-483A-2) used for WB at 0.1 µg/ml (A) and 1 µg/ml (B) and used for IP at 3 µg/mg lysate. RCH1 was also immunoprecipitated by a previous lot of A300-483A (lot number A300-483A-1) and by rabbit anti-RCH1 antibody A300-484A, which recognizes a downstream epitope. *Detection:* Chemiluminescence with exposure times of 3 minutes (A) and 3 seconds (B).

Detection of human RCH1 by immunohistochemistry. *Sample:* FFPE section of human ovarian carcinoma. *Antibody:* Affinity purified rabbit anti-RCH1 (Cat. No. A300-483A Lot2) used at a dilution of 1:1,000 (1 µg/ml). *Detection:* DAB