



SZABO SCANDIC

Part of Europa Biosite

Produktinformation



Forschungsprodukte & Biochemikalien



Zellkultur & Verbrauchsmaterial



Diagnostik & molekulare Diagnostik



Laborgeräte & Service

Weitere Information auf den folgenden Seiten!
See the following pages for more information!



Lieferung & Zahlungsart

siehe unsere [Liefer- und Versandbedingungen](#)

Zuschläge

- Mindermengenzuschlag
- Trockeneiszuschlag
- Gefahrgutzuschlag
- Expressversand

SZABO-SCANDIC HandelsgmbH

Quellenstraße 110, A-1100 Wien

T. +43(0)1 489 3961-0

F. +43(0)1 489 3961-7

mail@szabo-scandic.com

www.szabo-scandic.com

[linkedin.com/company/szaboscandic](https://www.linkedin.com/company/szaboscandic) 

RCH1 /KPNA2 Antibody

Rabbit Polyclonal

| | | |
|---------------------------|------------|-------------|
| Antigen Affinity Purified | Protein ID | NP_002257.1 |
| Catalog No. A300-484A-T | GeneID | 3838 |
| Lot No. A300-484A-T-3 | | |

| | |
|------------------------------|---|
| APPLICATIONS | WB, IP, IHC |
| SPECIES REACTIVITY | Human, Mouse |
| AMOUNT | 10 µl |
| CONCENTRATION | 1000 µg/ml |
| STORAGE/SHELF LIFE | 2 – 8°C / 1 year from date of receipt |
| PHYSICAL STATE | Liquid |
| BUFFER | Tris-citrate/phosphate buffer, pH 7 to 8 containing 0.09% Sodium Azide |
| ISOTYPE | IgG |
| ORIGIN | USA |
| PRODUCTION PROCEDURES | Antibody was affinity purified using an epitope specific to RCH1 /KPNA2 immobilized on solid support. |

The epitope recognized by A300-484A-T maps to a region between residue 475 and the C-terminus (residue 529) of human RAG cohort 1 (Karyopherin Alpha 2) using the numbering given in entry NP_002257.1 (GeneID 3838).

APPLICATIONS Centrifuge tube to remove product from lid. Optimal working dilutions should be determined experimentally by the investigator. Prepare working dilution immediately before use.

Western Blot 1:10,000 – 1:25,000

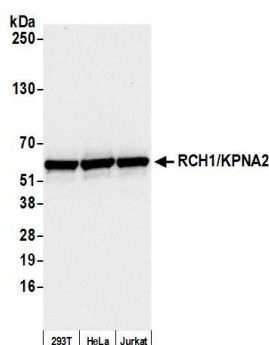
Immunoprecipitation 2 – 10 µg/mg lysate

Immunohistochemistry 1:1,000 to 1:5,000. Epitope retrieval with citrate buffer pH6.0 is recommended for FFPE tissue sections.

ADDITIONAL INFO <https://www.bethyl.com/product/A300-484A-T>

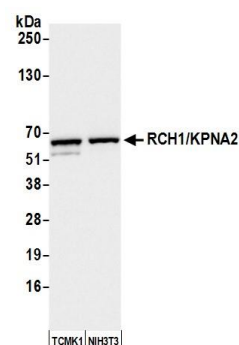
Use the link above to view SDS, a current list of citations, and other product specific information.
IP-western blot protocol: https://www.bethyl.com/content/protocol_IP_WB

This document certifies that this product has met all of the quality control standards defined by Bethyl Laboratories, Inc.
Michael Spencer, PhD Date: June 6, 2022

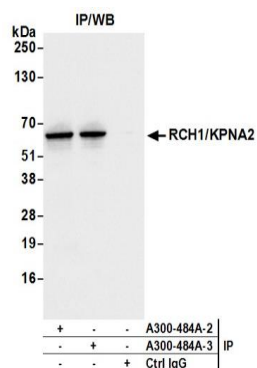
**Detection of human RCH1 /KPNA2 by western blot.**

Samples: Whole cell lysate (10 µg) from HEK293T, HeLa, and Jurkat cells prepared using NETN lysis buffer.

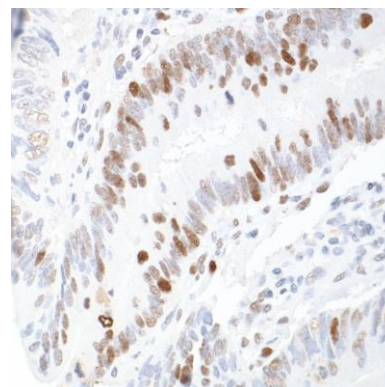
Antibody: Affinity purified rabbit anti-RCH1 /KPNA2 antibody A300-484A (lot A300-484A-3) used for WB at 0.04 µg/ml. **Detection:** Chemiluminescence with an exposure time of 3 seconds.

**Detection of mouse RCH1 /KPNA2 by western blot.**

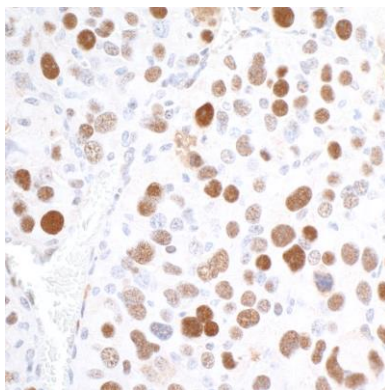
Samples: Whole cell lysate (10 µg) from TCMK-1 and NIH 3T3 cells prepared using NETN lysis buffer. **Antibody:** Affinity purified rabbit anti-RCH1 /KPNA2 antibody A300-484A (lot A300-484A-3) used for WB at 0.04 µg/ml. **Detection:** Chemiluminescence with an exposure time of 3 seconds.



Detection of human RCH1 /KPNA2 by western blot of immunoprecipitates. **Samples:** Whole cell lysate (1.0 mg per IP reaction; 20% of IP loaded) from HEK293T cells prepared using NETN lysis buffer. **Antibodies:** Affinity purified rabbit anti-RCH1 /KPNA2 antibody A300-484A (lot A300-484A-3) used for IP at 6 µg per reaction. RCH1 /KPNA2 was also immunoprecipitated by a previous lot of this antibody (lot A300-484A-2). For blotting immunoprecipitated RCH1 /KPNA2, A300-484A was used at 0.04 µg/ml. **Detection:** Chemiluminescence with an exposure time of 1 second.



Detection of human RCH1 /KPNA2 by immunohistochemistry. **Sample:** FFPE section of human colon carcinoma. **Antibody:** Affinity purified rabbit anti-RCH1 /KPNA2 (Cat. No. A300-484A lot 3) used at 1:5,000 (0.2µg/ml). **Detection:** DAB



Detection of mouse RCH1/KPNA2 by immunohistochemistry. *Sample:* FFPE section of mouse renal cell carcinoma. *Antibody:* Affinity purified rabbit anti-RCH1/KPNA2 (Cat. No. A300-484A lot 3) used at 1:5,000 (0.2µg/ml). *Detection:* DAB