



# SZABO SCANDIC

Part of Europa Biosite

## Produktinformation



Forschungsprodukte & Biochemikalien



Zellkultur & Verbrauchsmaterial



Diagnostik & molekulare Diagnostik



Laborgeräte & Service

Weitere Information auf den folgenden Seiten!  
See the following pages for more information!



### Lieferung & Zahlungsart

siehe unsere [Liefer- und Versandbedingungen](#)

### Zuschläge

- Mindermengenzuschlag
- Trockeneiszuschlag
- Gefahrgutzuschlag
- Expressversand

### SZABO-SCANDIC HandelsgmbH

Quellenstraße 110, A-1100 Wien

T. +43(0)1 489 3961-0

F. +43(0)1 489 3961-7

[mail@szabo-scandic.com](mailto:mail@szabo-scandic.com)

[www.szabo-scandic.com](http://www.szabo-scandic.com)

[linkedin.com/company/szaboscandic](https://www.linkedin.com/company/szaboscandic) 

# Cytoskeletal Actin Antibody

Rabbit Polyclonal

Antigen Affinity Purified	RefSeq ID	NP_001605.1
Catalog No. A300-485A-T	Uniprot ID	P63261
Lot No. 4	GeneID	71

<b>APPLICATIONS</b>	WB, IHC
<b>SPECIES REACTIVITY</b>	Human, Mouse
<b>PRESUMED REACTIVITY</b>	Based on 100% sequence identity, this antibody is predicted to react with X. laevis
<b>AMOUNT</b>	10 µl
<b>CONCENTRATION</b>	1000 µg/ml
<b>STORAGE/SHELF LIFE</b>	2 – 8°C / 1 year from date of receipt
<b>PHYSICAL STATE</b>	Liquid
<b>BUFFER</b>	Tris-citrate/phosphate buffer, pH 7 to 8 containing 0.09% Sodium Azide
<b>ISOTYPE</b>	IgG
<b>ORIGIN</b>	USA
<b>PRODUCTION PROCEDURES</b>	Antibody was affinity purified using an epitope specific to Cytoskeletal Actin immobilized on solid support.

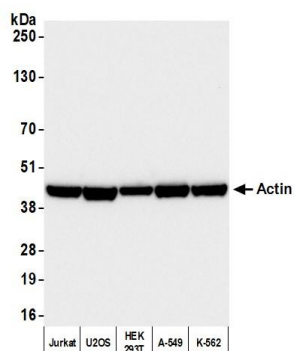
The epitope recognized by A300-485A-T maps to the N-terminus of human Gamma-actin using the numbering given in Swiss-Prot entry P63261 (GeneID 71). The N-terminus of Gamma-Actin is highly conserved with Beta-Actin and preliminary indications are that A300-485A-T also recognizes Beta-Actin (GeneID 60).

**APPLICATIONS** Centrifuge tube to remove product from lid. Optimal working dilutions should be determined experimentally by the investigator. Prepare working dilution immediately before use.

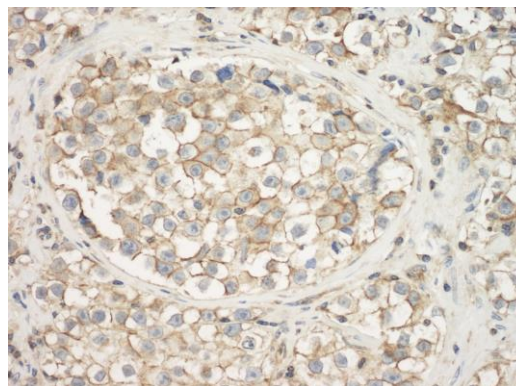
Western Blot	1:2000 – 1:10,000
Immunohistochemistry	1:2000 – 1:10,000. Epitope retrieval may not be necessary. In some instances epitope retrieval with citrate buffer pH 6.0 may enhance staining for FFPE tissue sections.

**ADDITIONAL INFO** <https://www.fortislifesciences.com/p/A300-485A-T>  
Use the link above to view SDS, a current list of citations, and other product specific information.

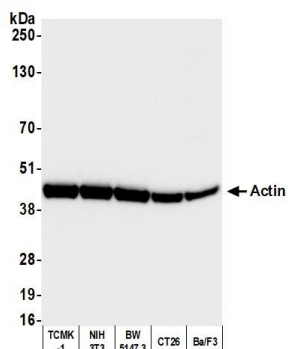
This document certifies that this product has met all of the quality control standards defined by Bethyl Laboratories, Inc.  
Michael Spencer, PhD Date: February 12, 2024



**Detection of human Actin by western blot.** *Samples:* Whole cell lysate (25 µg) from Jurkat, U2OS, HEK293T, A-549, and K-562 cells prepared using NETN lysis buffer. *Antibody:* Affinity purified rabbit anti-Actin antibody (A300-485A lot 4) used for WB at 0.1 µg/ml. *Detection:* Chemiluminescence with an exposure time of 1 second.



**Detection of human Actin by immunohistochemistry.** *Sample:* FFPE section of human testicular seminoma. *Antibody:* Affinity purified rabbit anti-Actin (A300-485A) used at a dilution of 1:1,000 (1 µg/ml). *Detection:* DAB



**Detection of mouse Actin by western blot.** *Samples:* Whole cell lysate (25 µg) from TCMK-1, NIH 3T3, BW5147.3, CT26, and Ba/F3 cells prepared using NETN lysis buffer. *Antibody:* Affinity purified rabbit anti-Actin antibody (A300-485A lot 4) used for WB at 0.1 µg/ml. *Detection:* Chemiluminescence with an exposure time of 1 second.