



SZABO SCANDIC

Part of Europa Biosite

Produktinformation



Forschungsprodukte & Biochemikalien



Zellkultur & Verbrauchsmaterial



Diagnostik & molekulare Diagnostik



Laborgeräte & Service

Weitere Information auf den folgenden Seiten!
See the following pages for more information!



Lieferung & Zahlungsart

siehe unsere [Liefer- und Versandbedingungen](#)

Zuschläge

- Mindermengenzuschlag
- Trockeneiszuschlag
- Gefahrgutzuschlag
- Expressversand

SZABO-SCANDIC HandelsgmbH

Quellenstraße 110, A-1100 Wien

T. +43(0)1 489 3961-0

F. +43(0)1 489 3961-7

mail@szabo-scandic.com

www.szabo-scandic.com

[linkedin.com/company/szaboscandic](https://www.linkedin.com/company/szaboscandic) 

Cytoskeletal Actin Antibody

Rabbit Polyclonal

Antigen Affinity Purified	RefSeq ID	NP_001605.1
Catalog No. A300-485A	Uniprot ID	P63261
Lot No. 4	GeneID	71

APPLICATIONS	WB, IHC
SPECIES REACTIVITY	Human, Mouse
PRESUMED REACTIVITY	Based on 100% sequence identity, this antibody is predicted to react with <i>X. laevis</i>
AMOUNT	100 µl
CONCENTRATION	1000 µg/ml
STORAGE/SHELF LIFE	2 – 8°C / 1 year from date of receipt
PHYSICAL STATE	Liquid
BUFFER	Tris-citrate/phosphate buffer, pH 7 to 8 containing 0.09% Sodium Azide
ISOTYPE	IgG
ORIGIN	USA
PRODUCTION PROCEDURES	Antibody was affinity purified using an epitope specific to Cytoskeletal Actin immobilized on solid support.

The epitope recognized by A300-485A maps to the N-terminus of human Gamma-actin using the numbering given in Swiss-Prot entry P63261 (GeneID 71). The N-terminus of Gamma-Actin is highly conserved with Beta-Actin and preliminary indications are that A300-485A also recognizes Beta-Actin (GeneID 60).

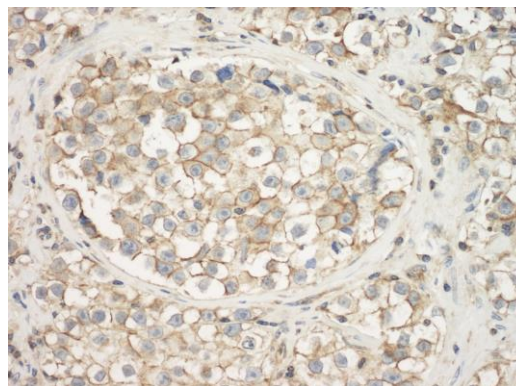
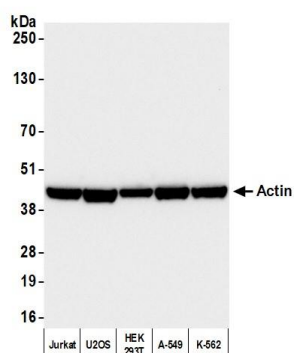
Immunoglobulin concentration was determined using Beer's Law where 1 mg/mL IgG has an A280 of 1.4.

APPLICATIONS Centrifuge tube to remove product from lid. Optimal working dilutions should be determined experimentally by the investigator. Prepare working dilution immediately before use.

Western Blot	1:2000 – 1:10,000
Immunohistochemistry	1:2000 – 1:10,000. Epitope retrieval may not be necessary. In some instances epitope retrieval with citrate buffer pH 6.0 may enhance staining for FFPE tissue sections.

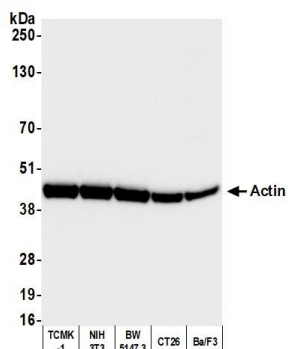
ADDITIONAL INFO <https://www.fortislifesciences.com/p/A300-485A>
Use the link above to view SDS, a current list of citations, and other product specific information.

This document certifies that this product has met all of the quality control standards defined by Bethyl Laboratories, Inc.
Michael Spencer, PhD Date: February 12, 2024



Detection of human Actin by western blot. *Samples:* Whole cell lysate (25 μ g) from Jurkat, U2OS, HEK293T, A-549, and K-562 cells prepared using NETN lysis buffer. *Antibody:* Affinity purified rabbit anti-Actin antibody (A300-485A lot 4) used for WB at 0.1 μ g/ml. *Detection:* Chemiluminescence with an exposure time of 1 second.

Detection of human Actin by immunohistochemistry. *Sample:* FFPE section of human testicular seminoma. *Antibody:* Affinity purified rabbit anti-Actin (A300-485A) used at a dilution of 1:1,000 (1 μ g/ml). *Detection:* DAB



Detection of mouse Actin by western blot. *Samples:* Whole cell lysate (25 μ g) from TCMK-1, NIH 3T3, BW5147.3, CT26, and Ba/F3 cells prepared using NETN lysis buffer. *Antibody:* Affinity purified rabbit anti-Actin antibody (A300-485A lot 4) used for WB at 0.1 μ g/ml. *Detection:* Chemiluminescence with an exposure time of 1 second.