



SZABO SCANDIC

Part of Europa Biosite

Produktinformation



Forschungsprodukte & Biochemikalien



Zellkultur & Verbrauchsmaterial



Diagnostik & molekulare Diagnostik



Laborgeräte & Service

Weitere Information auf den folgenden Seiten!
See the following pages for more information!



Lieferung & Zahlungsart

siehe unsere [Liefer- und Versandbedingungen](#)

Zuschläge

- Mindermengenzuschlag
- Trockeneiszuschlag
- Gefahrgutzuschlag
- Expressversand

SZABO-SCANDIC HandelsgmbH

Quellenstraße 110, A-1100 Wien

T. +43(0)1 489 3961-0

F. +43(0)1 489 3961-7

mail@szabo-scandic.com

www.szabo-scandic.com

[linkedin.com/company/szaboscandic](https://www.linkedin.com/company/szaboscandic)



Estrogen Receptor Alpha Antibody

Rabbit Polyclonal

Antigen Affinity Purified Protein ID P03372

Catalog No. A300-495A-T GeneID 2099

Lot No. A300-495A-T-1

APPLICATIONS	IP, IHC, ChIP-Seq
SPECIES REACTIVITY	Human
PRESUMED REACTIVITY	Based on 100% sequence identity, this antibody is predicted to react with Mouse and Rat
AMOUNT	10 µl
CONCENTRATION	1000 µg/ml
STORAGE/SHELF LIFE	2 – 8°C / 1 year from date of receipt
PHYSICAL STATE	Liquid
BUFFER	Tris-citrate/phosphate buffer, pH 7 to 8 containing 0.09% Sodium Azide
ISOTYPE	IgG
ORIGIN	USA
PRODUCTION PROCEDURES	Antibody was affinity purified using an epitope specific to Estrogen Receptor Alpha immobilized on solid support.

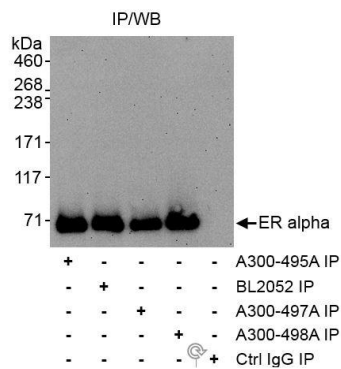
The epitope recognized by A300-495A-T maps to a region between residues 1 and 50 of human Estrogen Receptor Alpha using the numbering given in SwissProt entry P03372 (GeneID 2099).

Immunoglobulin concentration was determined by extinction coefficient: absorbance at 280 nm of 1.4 equals 1.0 mg of IgG.

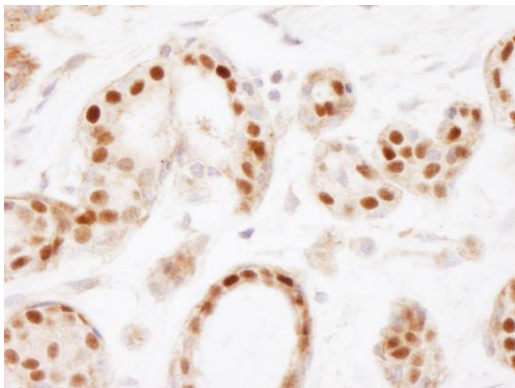
APPLICATIONS	Centrifuge tube to remove product from lid. Optimal working dilutions should be determined experimentally by the investigator. Prepare working dilution immediately before use.
Western Blot	Not recommended. Use rabbit anti-Estrogen Receptor Alpha antibody A300-498A.
Immunoprecipitation	3 – 5 µg/mg lysate
Immunohistochemistry	1:1,000 – 1:5,000. Epitope retrieval with Tris-EDTA pH 9.0 is recommended for FFPE tissue sections.
ChIP-Seq	ChIP-Seq 4 µg/30 µg chromatin

ADDITIONAL INFO <https://www.bethyl.com/product/A300-495A-T>
Use the link above to view SDS, a current list of citations, and other product specific information.
IP-western blot protocol: https://www.bethyl.com/content/protocol_IP_WB

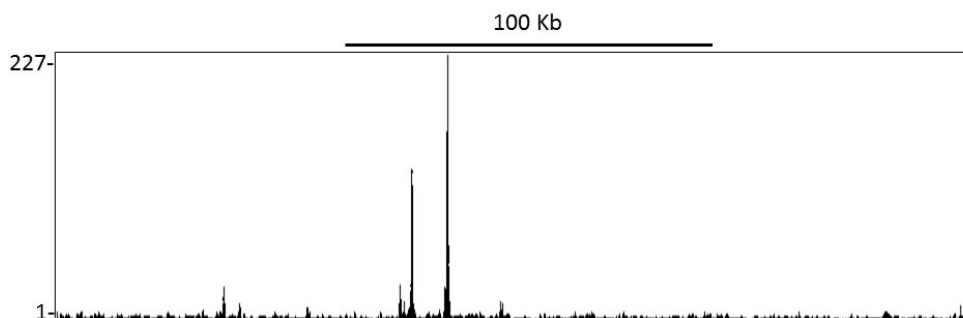
This document certifies that this product has met all of the quality control standards defined by Bethyl Laboratories, Inc.
Michael Spencer, PhD Date: June 6, 2022



Detection of human Estrogen Receptor Alpha by immunoprecipitation. *Samples:* Whole cell lysate (1 mg for IP, 1 / 4 of IP loaded) from MCF-7 cells. *Antibodies:* Affinity purified rabbit anti-ER alpha antibodies A300-495A (lot A300-495A-1), BL2052, A300-497A, and A300-498A each used at 3 µg/mg lysate for IP. Estrogen receptor alpha was blotted using A300-498A at 0.1 µg/ml. *Detection:* Chemiluminescence with an exposure time of 3 minutes.



Detection of human Estrogen Receptor Alpha by immunohistochemistry. *Sample:* FFPE section of human breast. *Antibody:* Affinity purified rabbit anti-Estrogen Receptor Alpha (Cat. No. A300-495A) used at a dilution of 1:2,500 (0.4µg/ml). *Detection:* DAB



Localization of Estrogen Receptor Alpha Binding Sites by ChIP-sequencing. Chromatin from treated MCF-7 cells was immunoprecipitated with anti-Estrogen Receptor Alpha antibody A300-495A and analyzed by DNA sequencing. The figure illustrates the peak distribution of Estrogen Receptor Alpha binding within a 250 Kb region of chromosome 21 as detected using anti-Estrogen Receptor Alpha antibody A300-495A. ChIP-seq validation performed by Active Motif, Carlsbad, CA.