



SZABO SCANDIC

Part of Europa Biosite

Produktinformation



Forschungsprodukte & Biochemikalien



Zellkultur & Verbrauchsmaterial



Diagnostik & molekulare Diagnostik



Laborgeräte & Service

Weitere Information auf den folgenden Seiten!
See the following pages for more information!



Lieferung & Zahlungsart

siehe unsere [Liefer- und Versandbedingungen](#)

Zuschläge

- Mindermengenzuschlag
- Trockeneiszuschlag
- Gefahrgutzuschlag
- Expressversand

SZABO-SCANDIC HandelsgmbH

Quellenstraße 110, A-1100 Wien

T. +43(0)1 489 3961-0

F. +43(0)1 489 3961-7

mail@szabo-scandic.com

www.szabo-scandic.com

[linkedin.com/company/szaboscandic](https://www.linkedin.com/company/szaboscandic) 

Estrogen Receptor Alpha Antibody

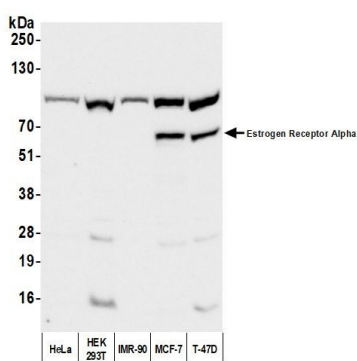
Rabbit Polyclonal

Antigen Affinity Purified	RefSeq ID	NP_000116.2
Catalog No. A300-498A	Uniprot ID	P03372
Lot No. 4	GeneID	2099

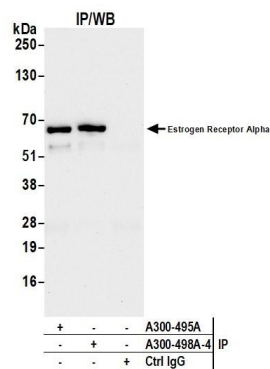
APPLICATIONS	WB, IP
SPECIES REACTIVITY	Human
AMOUNT	100 µl
CONCENTRATION	1000 µg/ml
STORAGE/SHELF LIFE	2 – 8°C / 1 year from date of receipt
PHYSICAL STATE	Liquid
BUFFER	Tris-citrate/phosphate buffer, pH 7 to 8 containing 0.09% Sodium Azide
ISOTYPE	IgG
ORIGIN	USA
PRODUCTION PROCEDURES	Antibody was affinity purified using an epitope specific to Estrogen Receptor Alpha immobilized on solid support. The epitope recognized by A300-498A maps to a region between residue 550 and the C-terminus (residue 595) of human Estrogen Receptor Alpha using the numbering given in SwissProt entry P03372 (GeneID 2099). Immunoglobulin concentration was determined using Beer's Law where 1mg/mL IgG has an A280 of 1.4.
APPLICATIONS	Centrifuge tube to remove product from lid. Optimal working dilutions should be determined experimentally by the investigator. Prepare working dilution immediately before use. Western Blot 1:2000 – 1:10,000 Immunoprecipitation 6 µg/mg lysate
ADDITIONAL INFO	https://www.fortislife.com/p/A300-498A Use the link above to view SDS, a current list of citations, and other product specific information.

This document certifies that this product has met all of the quality control standards defined by Bethyl Laboratories, Inc.
Michael Spencer, PhD

Date: June 7, 2024



Detection of human Estrogen Receptor Alpha by western blot. *Samples:* Whole cell lysate (50 µg) from HeLa, HEK293T, IMR-90, MCF-7, and T-47D cells prepared using NETN lysis buffer. *Antibody:* Affinity purified rabbit anti-Estrogen Receptor Alpha antibody (A300-498A lot 4) used for WB at 0.4 µg/ml. *Detection:* Chemiluminescence with an exposure time of 30 seconds.



Detection of human Estrogen Receptor Alpha by western blot of immunoprecipitates. *Samples:* Whole cell lysate (1.0 mg per IP reaction; 20% of IP loaded) from MCF-7 cells prepared using NETN lysis buffer. *Antibodies:* Affinity purified rabbit anti-Estrogen Receptor Alpha antibody (A300-498A lot 4) used for IP at 6 µg per reaction. Estrogen Receptor Alpha was also immunoprecipitated by Estrogen Receptor Alpha (A300-495A). For blotting immunoprecipitated Estrogen Receptor Alpha, A300-498A was used at 0.4 µg/ml. *Detection:* Chemiluminescence with an exposure time of 75 seconds.