



# SZABO SCANDIC

Part of Europa Biosite

## Produktinformation



Forschungsprodukte & Biochemikalien



Zellkultur & Verbrauchsmaterial



Diagnostik & molekulare Diagnostik



Laborgeräte & Service

Weitere Information auf den folgenden Seiten!  
See the following pages for more information!



### Lieferung & Zahlungsart

siehe unsere [Liefer- und Versandbedingungen](#)

### Zuschläge

- Mindermengenzuschlag
- Trockeneiszuschlag
- Gefahrgutzuschlag
- Expressversand

### SZABO-SCANDIC HandelsgmbH

Quellenstraße 110, A-1100 Wien

T. +43(0)1 489 3961-0

F. +43(0)1 489 3961-7

[mail@szabo-scandic.com](mailto:mail@szabo-scandic.com)

[www.szabo-scandic.com](http://www.szabo-scandic.com)

[linkedin.com/company/szaboscandic](https://www.linkedin.com/company/szaboscandic) 

# DHX36 Antibody

Rabbit Polyclonal

Antigen Affinity Purified

Protein ID NP\_065916.1

Catalog No. A300-525A-T

GeneID 170506

Lot No. A300-525A-T-2

**APPLICATIONS** WB, IP

**SPECIES REACTIVITY** Human, Mouse

**AMOUNT** 10 µl

**CONCENTRATION** 1000 µg/ml

**STORAGE/SHELF LIFE** 2 – 8°C / 1 year from date of receipt

**PHYSICAL STATE** Liquid

**BUFFER** Tris-citrate/phosphate buffer, pH 7 to 8 containing 0.09% Sodium Azide

**ISOTYPE** IgG

**ORIGIN** USA

**PRODUCTION PROCEDURES** Antibody was affinity purified using an epitope specific to DHX36 immobilized on solid support.

The epitope recognized by A300-525A-T maps to a region between residue 950 and the C-terminus (residue 1008) of human DEAH (Asp-Glu-Ala-His) Box Polypeptide 36 using the numbering given in entry NP\_065916.1 (GeneID 170506).

**APPLICATIONS** Centrifuge tube to remove product from lid. Optimal working dilutions should be determined experimentally by the investigator. Prepare working dilution immediately before use.

Western Blot 1:1,000 – 1:5,000

Immunoprecipitation 2 – 10 µg/mg lysate

**ADDITIONAL INFO** <https://www.bethyl.com/product/A300-525A-T>

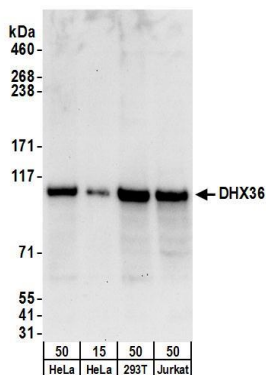
Use the link above to view SDS, a current list of citations, and other product specific information.

IP-western blot protocol: [https://www.bethyl.com/content/protocol\\_IP\\_WB](https://www.bethyl.com/content/protocol_IP_WB)

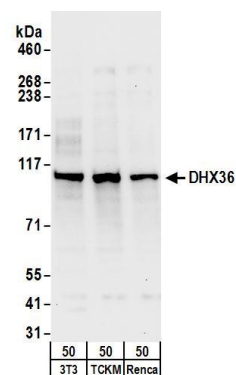
This document certifies that this product has met all of the quality control standards defined by Bethyl Laboratories, Inc.

Michael Spencer, PhD

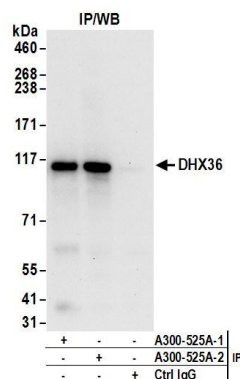
Date: June 6, 2022



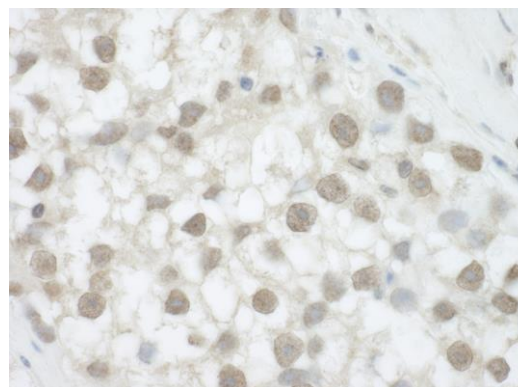
**Detection of human DHX36 by western blot.** *Samples:* Whole cell lysate from HeLa (15 and 50 µg), HEK293T (50 µg) and Jurkat (50µg) cells. *Antibodies:* Affinity purified rabbit anti-DHX36 antibody A300-525A (lot A300-525A-2) used for WB at 0.4 µg/ml. *Detection:* Chemiluminescence with an exposure time of 30 seconds.



**Detection of mouse DHX36 by western blot.** *Samples:* Whole cell lysate from NIH 3T3 (50µg), TCKM (50µg) and Renca (50µg) cells. *Antibodies:* Affinity purified rabbit anti-DHX36 antibody A300-525A (lot A300-525A-2) used for WB at 1 µg/ml. *Detection:* Chemiluminescence with an exposure time of 30 seconds.



**Detection of human DHX36 by western blot of immunoprecipitates.** *Samples:* Whole cell lysate (1 mg for IP; 20% of IP loaded) from HeLa cells. *Antibodies:* Affinity purified rabbit anti-DHX36 antibody A300-525A (lot A300-525A-2) used for IP at 6 µg/mg lysate. DHX36 was also immunoprecipitated by a previous lot (A300-525A-1) of this antibody. For blotting immunoprecipitated DHX36, A300-525A was used at 1 µg/ml. *Detection:* Chemiluminescence with an exposure time of 30 seconds.



**Detection of human DHX36 by immunohistochemistry.** *Sample:* FFPE section of human testicular seminoma. *Antibody:* Affinity purified rabbit anti-DHX36 (Cat. No. A300-525A Lot2) used at a dilution of 1:1,000 (1 µg/ml). *Detection:* DAB