



# SZABO SCANDIC

Part of Europa Biosite

## Produktinformation



Forschungsprodukte & Biochemikalien



Zellkultur & Verbrauchsmaterial



Diagnostik & molekulare Diagnostik



Laborgeräte & Service

Weitere Information auf den folgenden Seiten!  
See the following pages for more information!



### Lieferung & Zahlungsart

siehe unsere [Liefer- und Versandbedingungen](#)

### Zuschläge

- Mindermengenzuschlag
- Trockeneiszuschlag
- Gefahrgutzuschlag
- Expressversand

### SZABO-SCANDIC HandelsgmbH

Quellenstraße 110, A-1100 Wien

T. +43(0)1 489 3961-0

F. +43(0)1 489 3961-7

[mail@szabo-scandic.com](mailto:mail@szabo-scandic.com)

[www.szabo-scandic.com](http://www.szabo-scandic.com)

[linkedin.com/company/szaboscandic](https://www.linkedin.com/company/szaboscandic) 

# Pds5B Antibody

Rabbit Polyclonal

Antigen Affinity Purified

Protein ID CAB69911.1

Catalog No. A300-537A

GeneID 23047

Lot No. A300-537A-2



<b>APPLICATIONS</b>	WB, IP, IHC, IHC-IF
<b>SPECIES REACTIVITY</b>	Human, Mouse
<b>AMOUNT</b>	100 µl
<b>CONCENTRATION</b>	200 µg/ml
<b>STORAGE/SHELF LIFE</b>	2 – 8° C / 1 year from date of receipt
<b>PHYSICAL STATE</b>	Liquid
<b>BUFFER</b>	Tris-buffered Saline containing 0.1% BSA and 0.09% Sodium Azide
<b>ISOTYPE</b>	IgG
<b>ORIGIN</b>	USA
<b>PRODUCTION PROCEDURES</b>	Antibody was affinity purified using an epitope specific to Pds5B immobilized on solid support.

The epitope recognized by A300-537A maps to a region between residues 1200 and 1250 of human Precocious Dissociation of Sisters-5B using the numbering given in entry CAB69911.1 (GeneID 23047).

Immunoglobulin concentration was determined by extinction coefficient: absorbance at 280 nm of 1.4 equals 1.0 mg of IgG.

**APPLICATIONS** Centrifuge tube to remove product from lid. Optimal working dilutions should be determined experimentally by the investigator. Prepare working dilution immediately before use.

Western Blot	1:2,000 – 1:10,000
Immunoprecipitation	2 – 10 µg/mg lysate
Immunohistochemistry	1:100 – 1:500. Epitope retrieval with citrate buffer pH 6.0 is recommended for FFPE tissue sections.
Immunofluorescence (IHC)	1:100 – 1:500. Epitope retrieval with citrate buffer pH 6.0 is recommended for FFPE tissue sections.

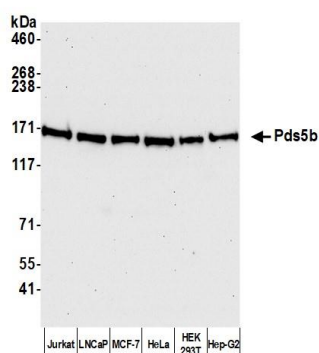
**IHC HUMAN CONTROLS** Breast Carcinoma, Ovarian Carcinoma, Prostate Carcinoma, Skin Basal Cell Carcinoma

**IHC MOUSE CONTROLS** Squamous Cell Carcinoma

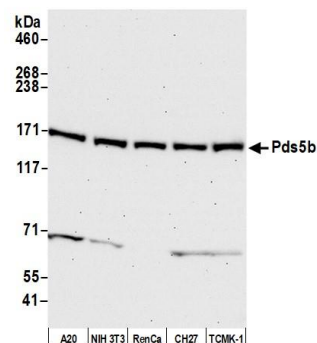
**ADDITIONAL INFO** <https://www.bethyl.com/product/A300-537A>

Use the link above to view SDS, a current list of citations, and other product specific information.  
IP-western blot protocol: [https://www.bethyl.com/content/protocol\\_IP\\_WB](https://www.bethyl.com/content/protocol_IP_WB)

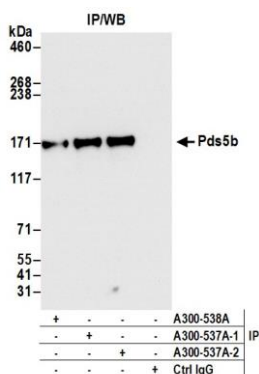
This document certifies that this product has met all of the quality control standards defined by Bethyl Laboratories, Inc.  
Eric McIntush, PhD | Chief Scientific Officer Date: June 8, 2020



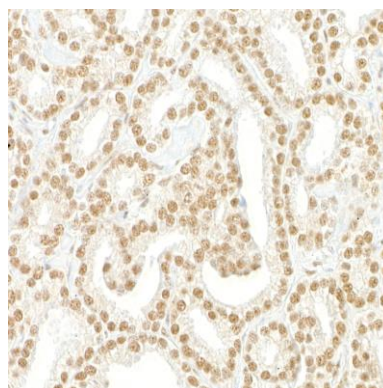
**Detection of human Pds5b by western blot.** *Samples:* Whole cell lysate (50 µg) from Jurkat, LNCaP, MCF-7, HeLa, HEK293T, and Hep-G2 cells prepared using NETN lysis buffer. *Antibody:* Affinity purified rabbit anti-Pds5b antibody A300-537A (lot A300-537A-2) used for WB at 0.04 µg/ml. *Detection:* Chemiluminescence with an exposure time of 30 seconds.



**Detection of mouse Pds5b by western blot.** *Samples:* Whole cell lysate (50 µg) from A20, NIH 3T3, RenCa, CH27, and TCMK-1 cells prepared using NETN lysis buffer. *Antibody:* Affinity purified rabbit anti-Pds5b antibody A300-537A (lot A300-537A-2) used for WB at 0.04 µg/ml. *Detection:* Chemiluminescence with an exposure time of 30 seconds.



**Detection of human Pds5b by western blot of immunoprecipitates.** *Samples:* Whole cell lysate (1.0 mg per IP reaction; 20% of IP loaded) from HEK293T cells prepared using NETN lysis buffer. *Antibodies:* Affinity purified rabbit anti-Pds5b antibody A300-537A (lot A300-537A-2) used for IP at 6 µg per reaction. Pds5b was also immunoprecipitated by a previous lot of this antibody (lot A300-537A-1) and rabbit anti-Pds5b antibody A300-538A. For blotting immunoprecipitated Pds5b, A300-537A was used at 0.04 µg/ml. *Detection:* Chemiluminescence with an exposure time of 3 seconds.



**Detection of human Pds5B by immunohistochemistry.** *Sample:* FFPE sections of human prostate carcinoma. *Antibody:* Affinity purified rabbit anti-Pds5B (Cat. No. A300-537A Lot2) used at a dilution of 1:200 (1 µg/ml). *Detection:* DAB