



SZABO SCANDIC

Part of Europa Biosite

Produktinformation



Forschungsprodukte & Biochemikalien



Zellkultur & Verbrauchsmaterial



Diagnostik & molekulare Diagnostik



Laborgeräte & Service

Weitere Information auf den folgenden Seiten!
See the following pages for more information!



Lieferung & Zahlungsart

siehe unsere [Liefer- und Versandbedingungen](#)

Zuschläge

- Mindermengenzuschlag
- Trockeneiszuschlag
- Gefahrgutzuschlag
- Expressversand

SZABO-SCANDIC Handels GmbH

Quellenstraße 110, A-1100 Wien

T. +43(0)1 489 3961-0

F. +43(0)1 489 3961-7

mail@szabo-scandic.com

www.szabo-scandic.com

[linkedin.com/company/szaboscandic](https://www.linkedin.com/company/szaboscandic) 

CTCF Antibody

Rabbit Polyclonal

Antigen Affinity Purified	RefSeq ID	NP_006556.1
Catalog No. A300-543A-T	Uniprot ID	P49711
Lot No. 7	GenID	10664

APPLICATIONS	WB, IP
SPECIES REACTIVITY	Human, Mouse
PRESUMED REACTIVITY	Based on 100% sequence identity, this antibody is predicted to react with Rat
AMOUNT	10 µl
CONCENTRATION	200 µg/ml
STORAGE/SHELF LIFE	2 – 8°C / 1 year from date of receipt
PHYSICAL STATE	Liquid
BUFFER	Tris-buffered Saline containing 0.1% BSA and 0.09% Sodium Azide
ISOTYPE	IgG
ORIGIN	USA
PRODUCTION PROCEDURES	Antibody was affinity purified using an epitope specific to CTCF immobilized on solid support.

The epitope recognized by A300-543A-T maps to a region between residues 650 and 700 of human CCCTC-binding factor using the numbering given in entry NP_006556.1 (GenID 10664).

APPLICATIONS Centrifuge tube to remove product from lid. Optimal working dilutions should be determined experimentally by the investigator. Prepare working dilution immediately before use.

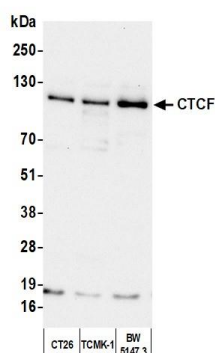
Western Blot 1:2,000 – 1:10,000

Immunoprecipitation 2 – 10 µg/mg lysate

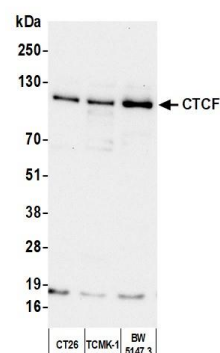
ADDITIONAL INFO <https://www.fortislifec.com/p/A300-543A-T>

Use the link above to view SDS, a current list of citations, and other product specific information.

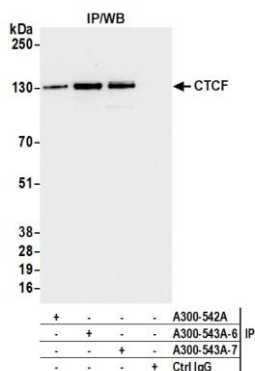
This document certifies that this product has met all of the quality control standards defined by Bethyl Laboratories, Inc.
Michael Spencer, PhD Date: August 29, 2023



Detection of human CTCF by western blot. *Samples:* Whole cell lysate (50 µg) from HEK293T, MCF-7, Hep-G2, A-549, and RKO cells prepared using NETN lysis buffer. *Antibody:* Affinity purified rabbit anti-CTCF antibody (A300-543A lot 7) used for WB at 0.1 µg/ml. *Detection:* Chemiluminescence with an exposure time of 75 seconds.



Detection of mouse CTCF by western blot. *Samples:* Whole cell lysate (50 µg) from CT26, TCMK-1, and BW5147.3 cells prepared using NETN lysis buffer. *Antibody:* Affinity purified rabbit anti-CTCF antibody (A300-543A lot 7) used for WB at 0.1 µg/ml. *Detection:* Chemiluminescence with an exposure time of 30 seconds.



Detection of human CTCF by western blot of immunoprecipitates. *Samples:* Whole cell lysate (1.0 mg per IP reaction; 20% of IP loaded) from HEK293T cells prepared using NETN lysis buffer. *Antibodies:* Affinity purified rabbit anti-CTCF antibody (A300-543A-7 lot 7) used for IP at 6 µg per reaction. CTCF was also immunoprecipitated by a previous lot of this antibody (A300-543A lot 6) and a second antibody against a different epitope of CTCF (A300-542A). For blotting immunoprecipitated CTCF, A300-543A was used at 0.1 µg/ml. *Detection:* Chemiluminescence with an exposure time of 3 seconds.