



# SZABO SCANDIC

Part of Europa Biosite

## Produktinformation



Forschungsprodukte & Biochemikalien



Zellkultur & Verbrauchsmaterial



Diagnostik & molekulare Diagnostik



Laborgeräte & Service

Weitere Information auf den folgenden Seiten!  
See the following pages for more information!



### Lieferung & Zahlungsart

siehe unsere [Liefer- und Versandbedingungen](#)

### Zuschläge

- Mindermengenzuschlag
- Trockeneiszuschlag
- Gefahrgutzuschlag
- Expressversand

### SZABO-SCANDIC Handels GmbH

Quellenstraße 110, A-1100 Wien

T. +43(0)1 489 3961-0

F. +43(0)1 489 3961-7

[mail@szabo-scandic.com](mailto:mail@szabo-scandic.com)

[www.szabo-scandic.com](http://www.szabo-scandic.com)

[linkedin.com/company/szaboscandic](https://www.linkedin.com/company/szaboscandic) 

# DDX19 Antibody

Rabbit Polyclonal

Antigen Affinity Purified	RefSeq ID	NP_009173.1
Catalog No. A300-547A-T	Uniprot ID	Q9UMR2
Lot No. 2	GeneID	11269

<b>APPLICATIONS</b>	WB, IP, IHC
<b>SPECIES REACTIVITY</b>	Human, Mouse
<b>AMOUNT</b>	10 µl
<b>CONCENTRATION</b>	200 µg/ml
<b>STORAGE/SHELF LIFE</b>	2 – 8°C / 1 year from date of receipt
<b>PHYSICAL STATE</b>	Liquid
<b>BUFFER</b>	Tris-buffered Saline containing 0.1% BSA and 0.09% Sodium Azide
<b>ISOTYPE</b>	IgG
<b>ORIGIN</b>	USA
<b>PRODUCTION PROCEDURES</b>	Antibody was affinity purified using an epitope specific to DDX19 immobilized on solid support.

The epitope recognized by A300-547A-T maps to a region between residue 450 and the C-terminus (residue 479) of human DEAD (Asp-Glu-Ala-Asp) box polypeptide 19B using the numbering given in entry NP\_009173.1 (GeneID 11269). The epitope is highly conserved with DDX19A (GeneID 55308), but crossreactivity of the antibody with this homolog has not been assessed.

**APPLICATIONS** Centrifuge tube to remove product from lid. Optimal working dilutions should be determined experimentally by the investigator. Prepare working dilution immediately before use.

Western Blot	1:1,000 – 1:10,000
Immunoprecipitation	2 – 10 µg/mg lysate
Immunohistochemistry	1:100 to 1:500. Epitope retrieval with Tris-EDTA pH9.0 is recommended for FFPE tissue sections.

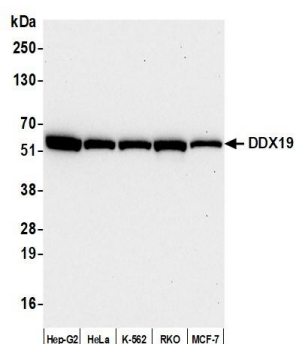
**IHC HUMAN CONTROLS** Breast Carcinoma

**IHC MOUSE CONTROLS** Teratoma

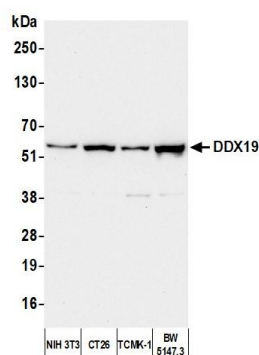
**ADDITIONAL INFO** <https://www.fortislifesciences.com/p/A300-547A-T>

Use the link above to view SDS, a current list of citations, and other product specific information.

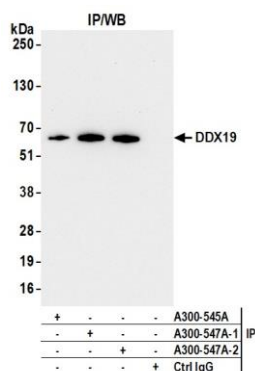
This document certifies that this product has met all of the quality control standards defined by Bethyl Laboratories, Inc.  
Michael Spencer, PhD Date: April 19, 2023



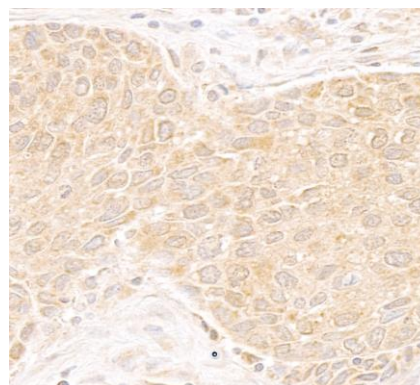
**Detection of human DDX19 by western blot.** *Samples:* Whole cell lysate (25 µg) from Hep-G2, HeLa, K-562, RKO, and MCF-7 cells prepared using NETN lysis buffer. *Antibody:* Affinity purified rabbit anti-DDX19 antibody (A300-547A lot 2) used for WB at 0.04 µg/ml. *Detection:* Chemiluminescence with an exposure time of 75 seconds.



**Detection of mouse DDX19 by western blot.** *Samples:* Whole cell lysate (50 µg) from NIH 3T3, CT26, TCMK-1, and BW5147.3 cells prepared using NETN lysis buffer. *Antibody:* Affinity purified rabbit anti-DDX19 antibody (A300-547A lot 2) used for WB at 0.04 µg/ml. *Detection:* Chemiluminescence with an exposure time of 30 seconds.



**Detection of human DDX19 by western blot of immunoprecipitates.** *Samples:* Whole cell lysate (1.0 mg per IP reaction; 10% of IP loaded) from Hep-G2 cells prepared using NETN lysis buffer. *Antibodies:* Affinity purified rabbit anti-DDX19 antibody (A300-547A lot 2) used for IP at 6 µg per reaction. DDX19 was also immunoprecipitated by a previous lot of this antibody (A300-547A lot 1) and a second antibody against a different epitope of DDX19 (A300-545A). For blotting immunoprecipitated DDX19, A300-547A was used at 0.04 µg/ml. *Detection:* Chemiluminescence with an exposure time of 30 seconds.



**Detection of human DDX19 by immunohistochemistry.** *Sample:* FFPE section of human breast carcinoma. *Antibody:* Affinity purified rabbit anti-DDX19 (Cat. No. A300-547A) used at a dilution of 1:200 (1 µg/ml). *Detection:* DAB