



SZABO SCANDIC

Part of Europa Biosite

Produktinformation



Forschungsprodukte & Biochemikalien



Zellkultur & Verbrauchsmaterial



Diagnostik & molekulare Diagnostik



Laborgeräte & Service

Weitere Information auf den folgenden Seiten!
See the following pages for more information!



Lieferung & Zahlungsart

siehe unsere [Liefer- und Versandbedingungen](#)

Zuschläge

- Mindermengenzuschlag
- Trockeneiszuschlag
- Gefahrgutzuschlag
- Expressversand

SZABO-SCANDIC HandelsgmbH

Quellenstraße 110, A-1100 Wien

T. +43(0)1 489 3961-0

F. +43(0)1 489 3961-7

mail@szabo-scandic.com

www.szabo-scandic.com

[linkedin.com/company/szaboscandic](https://www.linkedin.com/company/szaboscandic) 

ZBTB7/FBI-1 Antibody

Rabbit Polyclonal

Antigen Affinity Purified

Protein ID NP_056982.1

Catalog No. A300-549A

GeneID 51341

Lot No. A300-549A-1



APPLICATIONS	WB, IP, IHC
SPECIES REACTIVITY	Human
AMOUNT	100 µl
CONCENTRATION	200 µg/ml
STORAGE/SHELF LIFE	2 – 8° C / 1 year from date of receipt
PHYSICAL STATE	Liquid
BUFFER	Tris-buffered Saline containing 0.1% BSA and 0.09% Sodium Azide
ISOTYPE	IgG
ORIGIN	USA
PRODUCTION PROCEDURES	Antibody was affinity purified using an epitope specific to ZBTB7/FBI-1 immobilized on solid support.

The epitope recognized by A300-549A maps to a region between residue 525 and the C-terminus (residue 584) of human ZBTB7 (Factor Binding IST protein 1) using the numbering given in entry NP_056982.1 (GeneID 51341).

Immunoglobulin concentration was determined by extinction coefficient: absorbance at 280 nm of 1.4 equals 1.0 mg of IgG.

APPLICATIONS Centrifuge tube to remove product from lid. Optimal working dilutions should be determined experimentally by the investigator. Prepare working dilution immediately before use.

Western Blot 1:2,000 – 1:10,000

Immunoprecipitation 2 – 5 µg/mg lysate

Immunohistochemistry 1:100 – 1:500. Epitope retrieval with Tris-EDTA pH 9.0 is recommended for FFPE tissue sections.

APPLICATION NOTES Western blot of immunoprecipitates performed using Normal Pig Serum (Cat. No. S100-020), Goat anti-Rabbit Light Chain HRP Conjugate (Cat. No. A120-113P) and 4-20% SDS-PAGE (link to IP-western blot protocol in Additional Info section below).

Western blot of lysates performed using standard western blot reagents and 4-20% SDS-PAGE.

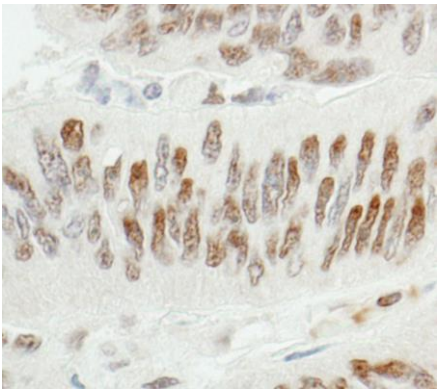
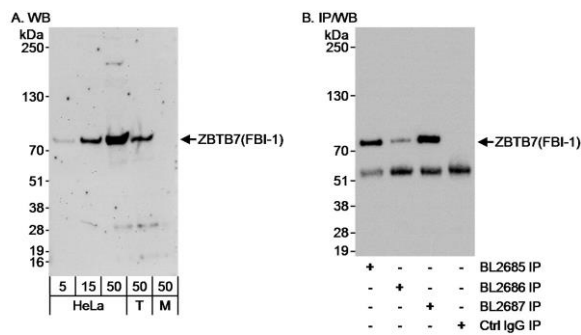
IHC HUMAN CONTROLS Breast Carcinoma, Colon Carcinoma, Prostate Carcinoma

ADDITIONAL INFO <https://www.bethyl.com/product/A300-549A>

Use the link above to view SDS, a current list of citations, and other product specific information.

IP-western blot protocol: https://www.bethyl.com/content/protocol_IP_WB

This document certifies that this product has met all of the quality control standards defined by Bethyl Laboratories, Inc.
Eric McIntush, PhD | Chief Scientific Officer Date: June 21, 2019



Detection of human ZBTB7/FBI-1 by western blot and immunoprecipitation. *Samples:* A) Whole cell lysate from HeLa (5, 15 and 50 µg), HEK293T (T; 50 µg) and NIH 3T3 (M; 50 µg) cells. B) Whole cell lysate (1 mg for IP; 1/4 of IP loaded) from HeLa cells. *Antibodies:* Affinity purified rabbit anti-ZBTB7/FBI-1 antibody A300-549A used at 0.04 µg/ml for WB (A and B) and at 3 µg/mg lysate for IP (B). ZBTB7/FBI-1 was also immunoprecipitated using rabbit antibodies A300-548A, and BL2686, which are to downstream epitopes on ZBTB7/FBI-1. *Detection:* Chemiluminescence with exposure times of 3 minutes (A) and 10 seconds (B).

Detection of human ZBTB7/FBI-1 by immunohistochemistry. *Sample:* FFPE section of human colon carcinoma. *Antibody:* Affinity purified rabbit anti-ZBTB7/FBI-1 (Cat. No. A300-549A Lot1) used at a dilution of 1:200 (1 µg/ml). *Detection:* DAB