



# SZABO SCANDIC

Part of Europa Biosite

## Produktinformation



Forschungsprodukte & Biochemikalien



Zellkultur & Verbrauchsmaterial



Diagnostik & molekulare Diagnostik



Laborgeräte & Service

Weitere Information auf den folgenden Seiten!  
See the following pages for more information!



### Lieferung & Zahlungsart

siehe unsere [Liefer- und Versandbedingungen](#)

### Zuschläge

- Mindermengenzuschlag
- Trockeneiszuschlag
- Gefahrgutzuschlag
- Expressversand

### SZABO-SCANDIC HandelsgmbH

Quellenstraße 110, A-1100 Wien

T. +43(0)1 489 3961-0

F. +43(0)1 489 3961-7

[mail@szabo-scandic.com](mailto:mail@szabo-scandic.com)

[www.szabo-scandic.com](http://www.szabo-scandic.com)

[linkedin.com/company/szaboscandic](https://www.linkedin.com/company/szaboscandic) 

# NMI Antibody

Rabbit Polyclonal

Antigen Affinity Purified

Protein ID NP\_004679.1

Catalog No. A300-551A-T

GeneID 9111

Lot No. A300-551A-T-1

<b>APPLICATIONS</b>	WB, IHC
<b>SPECIES REACTIVITY</b>	Human
<b>AMOUNT</b>	10 µl
<b>CONCENTRATION</b>	200 µg/ml
<b>STORAGE/SHELF LIFE</b>	2 – 8°C / 1 year from date of receipt
<b>PHYSICAL STATE</b>	Liquid
<b>BUFFER</b>	Tris-buffered Saline containing 0.1% BSA and 0.09% Sodium Azide
<b>ISOTYPE</b>	IgG
<b>ORIGIN</b>	USA
<b>PRODUCTION PROCEDURES</b>	Antibody was affinity purified using an epitope specific to NMI immobilized on solid support.

The epitope recognized by A300-551A-T maps to a region between residue 250 and the C-terminus (residue 307) of human N-myc and STAT interactor using the numbering given in entry NP\_004679.1 (GeneID 9111).

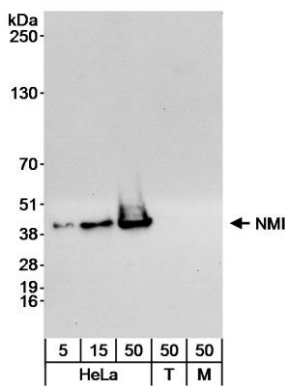
**APPLICATIONS** Centrifuge tube to remove product from lid. Optimal working dilutions should be determined experimentally by the investigator. Prepare working dilution immediately before use.

Western Blot	1:2,000 – 1:10,000
Immunoprecipitation	Not recommended. Use rabbit anti-NMI antibody A300-550A.
Immunohistochemistry	1:500 – 1:2,000. Epitope retrieval with citrate buffer pH 6.0 is recommended for FFPE tissue sections.

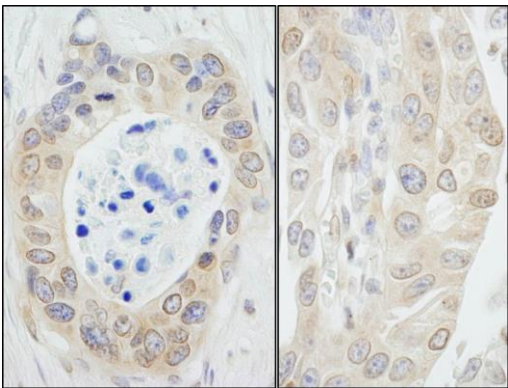
**ADDITIONAL INFO** <https://www.bethyl.com/product/A300-551A-T>

Use the link above to view SDS, a current list of citations, and other product specific information.

This document certifies that this product has met all of the quality control standards defined by Bethyl Laboratories, Inc.  
Michael Spencer, PhD Date: June 6, 2022



**Detection of human NMI by western blot.** *Samples:* Whole cell lysate from HeLa (5, 15 and 50 µg), HEK293T (T; 50 µg) and NIH 3T3 (M; 50 µg) cells. *Antibody:* Affinity purified rabbit anti-NMI antibody (Cat. No. A300-551A) used at 0.04 µg/ml for WB. *Detection:* Chemiluminescence with an exposure time of 30 seconds.



**Detection of human NMI by immunohistochemistry.** *Sample:* FFPE section of human ovarian carcinoma (left) and bladder carcinoma (right). *Antibody:* Affinity purified rabbit anti-NMI (Cat. No. A300-551A Lot1) used at a dilution of 1:1,000 (0.2 µg/ml). *Detection:* DAB