



SZABO SCANDIC

Part of Europa Biosite

Produktinformation



Forschungsprodukte & Biochemikalien



Zellkultur & Verbrauchsmaterial



Diagnostik & molekulare Diagnostik



Laborgeräte & Service

Weitere Information auf den folgenden Seiten!
See the following pages for more information!



Lieferung & Zahlungsart

siehe unsere [Liefer- und Versandbedingungen](#)

Zuschläge

- Mindermengenzuschlag
- Trockeneiszuschlag
- Gefahrgutzuschlag
- Expressversand

SZABO-SCANDIC Handels GmbH

Quellenstraße 110, A-1100 Wien

T. +43(0)1 489 3961-0

F. +43(0)1 489 3961-7

mail@szabo-scandic.com

www.szabo-scandic.com

[linkedin.com/company/szaboscandic](https://www.linkedin.com/company/szaboscandic)



GCN2 Antibody

Rabbit Polyclonal

Antigen Affinity Purified

Protein ID NP_001013725.2

Catalog No. A300-555A-T

GeneID 440275

Lot No. A300-555A-T-1

APPLICATIONS WB, IP

SPECIES REACTIVITY Human

AMOUNT 10 µl

CONCENTRATION 1000 µg/ml

STORAGE/SHELF LIFE 2 – 8°C / 1 year from date of receipt

PHYSICAL STATE Liquid

BUFFER Tris-citrate/phosphate buffer, pH 7 to 8 containing 0.09% Sodium Azide

ISOTYPE IgG

ORIGIN USA

PRODUCTION PROCEDURES Antibody was affinity purified using an epitope specific to GCN2 immobilized on solid support.

The epitope recognized by A300-555A-T maps to a region between residues 1 and 50 of human GCN2 (eIF2AK4, eukaryotic translation initiation factor 2 alpha kinase 4) using the numbering given in entry NP_001013725.2 (GeneID 440275).

APPLICATIONS Centrifuge tube to remove product from lid. Optimal working dilutions should be determined experimentally by the investigator. Prepare working dilution immediately before use.

Western Blot 1:5,000 – 1:15,000

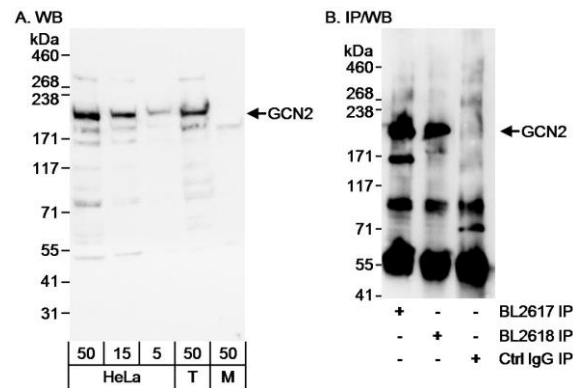
Immunoprecipitation 2 – 5 µg/mg lysate

ADDITIONAL INFO <https://www.bethyl.com/product/A300-555A-T>

Use the link above to view SDS, a current list of citations, and other product specific information.

IP-western blot protocol: https://www.bethyl.com/content/protocol_IP_WB

This document certifies that this product has met all of the quality control standards defined by Bethyl Laboratories, Inc.
Michael Spencer, PhD Date: June 6, 2022



Detection of human GCN2 by western blot and immunoprecipitation. *Samples:* Whole cell lysate from HeLa (5, 15 and 50 μ g), HEK293T (T; 50 μ g) and NIH 3T3 (50 μ g) cells. *Antibodies:* Affinity purified rabbit anti-GCN2 antibody BL2617 (Cat. No. A300-555A) used at 0.1 μ g/ml for WB (A and B) and at 3 μ g/mg lysate for IP (B). GCN2 was also immunoprecipitated using BL2618, which is an affinity purified antibody to a downstream epitope from GCN2. *Detection:* Chemiluminescence with an exposure time of 10 seconds (A and B).