



SZABO SCANDIC

Part of Europa Biosite

Produktinformation



Forschungsprodukte & Biochemikalien



Zellkultur & Verbrauchsmaterial



Diagnostik & molekulare Diagnostik



Laborgeräte & Service

Weitere Information auf den folgenden Seiten!
See the following pages for more information!



Lieferung & Zahlungsart

siehe unsere [Liefer- und Versandbedingungen](#)

Zuschläge

- Mindermengenzuschlag
- Trockeneiszuschlag
- Gefahrgutzuschlag
- Expressversand

SZABO-SCANDIC HandelsgmbH

Quellenstraße 110, A-1100 Wien

T. +43(0)1 489 3961-0

F. +43(0)1 489 3961-7

mail@szabo-scandic.com

www.szabo-scandic.com

[linkedin.com/company/szaboscandic](https://www.linkedin.com/company/szaboscandic)



SYK Antibody

Rabbit Polyclonal

Antigen Affinity Purified

Protein ID NP_003168.2

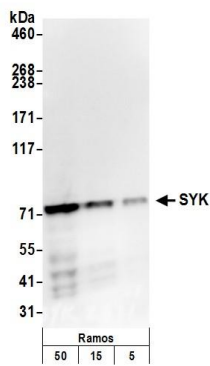
Catalog No. A300-559A-T

GenelD 6850

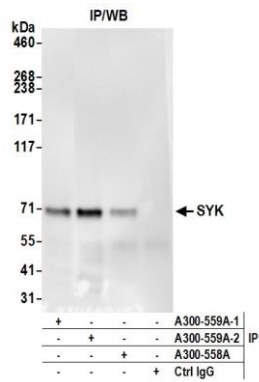
Lot No. A300-559A-T-2

APPLICATIONS	WB, IP
SPECIES REACTIVITY	Human
PRESUMED REACTIVITY	Based on 100% sequence identity, this antibody is predicted to react with Mouse, Rat and Pig
AMOUNT	10 µl
CONCENTRATION	200 µg/ml
STORAGE/SHELF LIFE	2 – 8°C / 1 year from date of receipt
PHYSICAL STATE	Liquid
BUFFER	Tris-buffered Saline containing 0.1% BSA and 0.09% Sodium Azide
ISOTYPE	IgG
ORIGIN	USA
PRODUCTION PROCEDURES	Antibody was affinity purified using an epitope specific to SYK immobilized on solid support. The epitope recognized by A300-559A-T maps to a region between residues 350 and 400 of human Spleen Tyrosine Kinase using the numbering given in entry NP_003168.2 (GenelD 6850).
APPLICATIONS	Centrifuge tube to remove product from lid. Optimal working dilutions should be determined experimentally by the investigator. Prepare working dilution immediately before use. Western Blot 1:2,000 – 1:10,000 Immunoprecipitation 2 – 10 µg/mg lysate
ADDITIONAL INFO	https://www.bethyl.com/product/A300-559A-T Use the link above to view SDS, a current list of citations, and other product specific information. IP-western blot protocol: https://www.bethyl.com/content/protocol_IP_WB

This document certifies that this product has met all of the quality control standards defined by Bethyl Laboratories, Inc.
Michael Spencer, PhD Date: June 6, 2022



Detection of human SYK by western blot. *Samples:* Whole cell lysate (5, 15 and 50 μ g) from Ramos cells prepared using NETN lysis buffer. *Antibody:* Affinity purified rabbit anti-SYK antibody A300-559A (lot A300-559A-2) used for WB at 0.1 μ g/ml. *Detection:* Chemiluminescence with an exposure time of 3 minutes.



Detection of human SYK by western blot of immunoprecipitates. *Samples:* Whole cell lysate (0.5 or 1.0 mg per IP reaction; 20% of IP loaded) from Ramos cells prepared using NETN lysis buffer. *Antibodies:* Affinity purified rabbit anti-SYK antibody A300-559A (lot A300-559A-2) used for IP at 6 μ g per reaction. SYK was also immunoprecipitated by a previous lot of this antibody (lot A300-559A-1) and rabbit anti-SYK antibody A300-558A. For blotting immunoprecipitated SYK, A300-559A was used at 1 μ g/ml. *Detection:* Chemiluminescence with an exposure time of 3 minutes.