



# SZABO SCANDIC

Part of Europa Biosite

## Produktinformation



Forschungsprodukte & Biochemikalien



Zellkultur & Verbrauchsmaterial



Diagnostik & molekulare Diagnostik



Laborgeräte & Service

Weitere Information auf den folgenden Seiten!  
See the following pages for more information!



### Lieferung & Zahlungsart

siehe unsere [Liefer- und Versandbedingungen](#)

### Zuschläge

- Mindermengenzuschlag
- Trockeneiszuschlag
- Gefahrgutzuschlag
- Expressversand

### SZABO-SCANDIC HandelsgmbH

Quellenstraße 110, A-1100 Wien

T. +43(0)1 489 3961-0

F. +43(0)1 489 3961-7

[mail@szabo-scandic.com](mailto:mail@szabo-scandic.com)

[www.szabo-scandic.com](http://www.szabo-scandic.com)

[linkedin.com/company/szaboscandic](https://www.linkedin.com/company/szaboscandic) 

# RIF1 Antibody

Rabbit Polyclonal

Antigen Affinity Purified

Catalog No. A300-567A

Lot No. A300-567A-2

Protein ID NP\_060621.3

GeneID 55183



<b>APPLICATIONS</b>	IP, IHC
<b>SPECIES REACTIVITY</b>	Human
<b>AMOUNT</b>	100 µl
<b>CONCENTRATION</b>	1000 µg/ml
<b>STORAGE/SHELF LIFE</b>	2 – 8° C / 1 year from date of receipt
<b>PHYSICAL STATE</b>	Liquid
<b>BUFFER</b>	Tris-citrate/phosphate buffer, pH 7 to 8 containing 0.09% Sodium Azide
<b>ISOTYPE</b>	IgG
<b>ORIGIN</b>	USA
<b>PRODUCTION PROCEDURES</b>	Antibody was affinity purified using an epitope specific to RIF1 immobilized on solid support.

The epitope recognized by A300-567A maps to a region between residues 1 and 50 of human Rap1 Interacting Factor 1 using the numbering given in entry NP\_060621.3 (GeneID 55183).

Immunoglobulin concentration was determined by extinction coefficient: absorbance at 280 nm of 1.4 equals 1.0 mg of IgG.

**APPLICATIONS** Centrifuge tube to remove product from lid. Optimal working dilutions should be determined experimentally by the investigator. Prepare working dilution immediately before use.

Western Blot Not recommended. Use rabbit anti-RIF1 Antibodies A300-568A or A300-569A.

Immunoprecipitation 2 – 10 µg/mg lysate

Immunohistochemistry 1:500 – 1:2,000. Epitope retrieval with citrate buffer pH 6.0 is recommended for FFPE tissue sections.

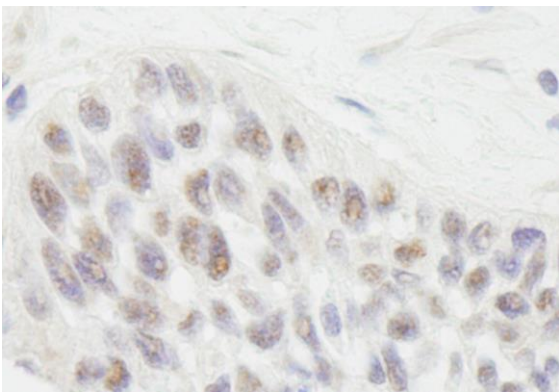
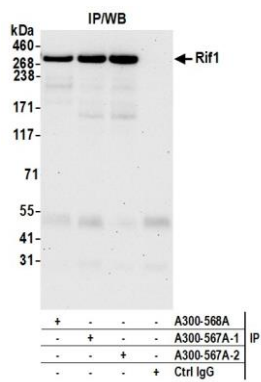
**IHC HUMAN CONTROLS** Laryngeal Squamous Cell Carcinoma, Small Cell Lung Cancer, Testicular Seminoma

**ADDITIONAL INFO** <https://www.bethyl.com/product/A300-567A>

Use the link above to view SDS, a current list of citations, and other product specific information.

IP-western blot protocol: [https://www.bethyl.com/content/protocol\\_IP\\_WB](https://www.bethyl.com/content/protocol_IP_WB)

This document certifies that this product has met all of the quality control standards defined by Bethyl Laboratories, Inc.  
Brian McWilliams, PhD Date: August 20, 2021



**Detection of human Rif1 by western blot of immunoprecipitates.** *Samples:* Whole cell lysate (1.0 mg per IP reaction; 20% of IP loaded) from HeLa cells prepared using NETN lysis buffer. *Antibodies:* Affinity purified rabbit anti-Rif1 antibody (A300-567A lot 2) used for IP at 6 µg per reaction. Rif1 was also immunoprecipitated by a previous lot of this antibody (A300-567A lot 1) and a second antibody against a different epitope of Rif1 (A300-568A). For blotting immunoprecipitated Rif1, A300-567A was used at 0.1 µg/ml. *Detection:* Chemiluminescence with an exposure time of 30 seconds.

**Detection of human RIF1 by immunohistochemistry.** *Sample:* FFPE section of human laryngeal squamous cell carcinoma. *Antibody:* Affinity purified rabbit anti-RIF1 (Cat. No. A300-567A Lot1) used at a dilution of 1:1,000 (1 µg/ml). *Detection:* DAB