



# SZABO SCANDIC

Part of Europa Biosite

## Produktinformation



Forschungsprodukte & Biochemikalien



Zellkultur & Verbrauchsmaterial



Diagnostik & molekulare Diagnostik



Laborgeräte & Service

Weitere Information auf den folgenden Seiten!  
See the following pages for more information!



### Lieferung & Zahlungsart

siehe unsere [Liefer- und Versandbedingungen](#)

### Zuschläge

- Mindermengenzuschlag
- Trockeneiszuschlag
- Gefahrgutzuschlag
- Expressversand

### SZABO-SCANDIC HandelsgmbH

Quellenstraße 110, A-1100 Wien

T. +43(0)1 489 3961-0

F. +43(0)1 489 3961-7

[mail@szabo-scandic.com](mailto:mail@szabo-scandic.com)

[www.szabo-scandic.com](http://www.szabo-scandic.com)

[linkedin.com/company/szaboscandic](https://www.linkedin.com/company/szaboscandic)



# RIF1 Antibody

Rabbit Polyclonal

Antigen Affinity Purified

Protein ID NP\_060621.3

Catalog No. A300-569A

GeneID 55183

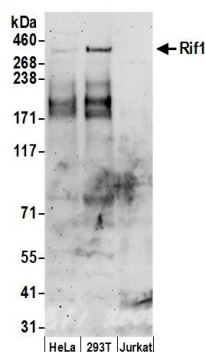
Lot No. A300-569A-5



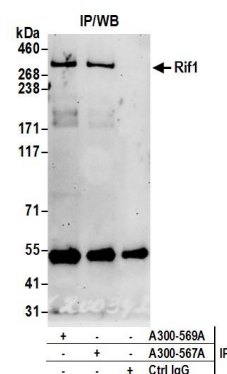
|                              |  |              |                   |                     |                     |                      |  |
|------------------------------|--|--------------|-------------------|---------------------|---------------------|----------------------|--|
| <b>APPLICATIONS</b>          | WB, IP, IHC  |              |                   |                     |                     |                      |  |
| <b>SPECIES REACTIVITY</b>    | Human  |              |                   |                     |                     |                      |  |
| <b>AMOUNT</b>                | 100 µl   |              |                   |                     |                     |                      |  |
| <b>CONCENTRATION</b>         | 1000 µg/ml   |              |                   |                     |                     |                      |  |
| <b>STORAGE/SHELF LIFE</b>    | 2 – 8° C / 1 year from date of receipt   |              |                   |                     |                     |                      |  |
| <b>PHYSICAL STATE</b>        | Liquid   |              |                   |                     |                     |                      |  |
| <b>BUFFER</b>                | Tris-citrate/phosphate buffer, pH 7 to 8 containing 0.09% Sodium Azide   |              |                   |                     |                     |                      |  |
| <b>ISOTYPE</b>               | IgG  |              |                   |                     |                     |                      |  |
| <b>ORIGIN</b>                | USA  |              |                   |                     |                     |                      |  |
| <b>PRODUCTION PROCEDURES</b> | <p>Antibody was affinity purified using an epitope specific to RIF1 immobilized on solid support.</p> <p>The epitope recognized by A300-569A maps to a region between residue 2425 and the C-terminus (residue 2472) of human Rap1 Interacting Factor 1 using the numbering given in entry NP_060621.3 (GeneID 55183).</p> <p>Immunoglobulin concentration was determined by extinction coefficient: absorbance at 280 nm of 1.4 equals 1.0 mg of IgG.</p>                             |              |                   |                     |                     |                      |  |
| <b>APPLICATIONS</b>          | <p>Centrifuge tube to remove product from lid. Optimal working dilutions should be determined experimentally by the investigator. Prepare working dilution immediately before use.</p> <table><tr><td>Western Blot</td><td>1:1,000 – 1:5,000</td></tr><tr><td>Immunoprecipitation</td><td>2 – 10 µg/mg lysate</td></tr><tr><td>Immunohistochemistry</td><td>1:1,000 – 1:5,000. Epitope retrieval with citrate buffer pH 6.0 is recommended for FFPE tissue sections.</td></tr></table> | Western Blot | 1:1,000 – 1:5,000 | Immunoprecipitation | 2 – 10 µg/mg lysate | Immunohistochemistry | 1:1,000 – 1:5,000. Epitope retrieval with citrate buffer pH 6.0 is recommended for FFPE tissue sections. |
| Western Blot                 | 1:1,000 – 1:5,000  |              |                   |                     |                     |                      |  |
| Immunoprecipitation          | 2 – 10 µg/mg lysate  |              |                   |                     |                     |                      |  |
| Immunohistochemistry         | 1:1,000 – 1:5,000. Epitope retrieval with citrate buffer pH 6.0 is recommended for FFPE tissue sections.   |              |                   |                     |                     |                      |  |
| <b>APPLICATION NOTES</b>     | Western blot of immunoprecipitates performed using Normal Pig Serum (Cat. No. S100-020), Goat anti-Rabbit Light Chain HRP Conjugate (Cat. No. A120-113P) and 4-8% SDS-PAGE (link to IP-western blot protocol in Additional Info section below).  |              |                   |                     |                     |                      |  |
| <b>IHC HUMAN CONTROLS</b>    | Western blot of lysates performed using standard western blot reagents and 4-8% SDS-PAGE. Breast Carcinoma, Laryngeal Squamous Cell Carcinoma, Ovarian Carcinoma, Small Cell Lung Cancer, Testicular Seminoma  |              |                   |                     |                     |                      |  |
| <b>ADDITIONAL INFO</b>       | <p><a href="https://www.bethyl.com/product/A300-569A">https://www.bethyl.com/product/A300-569A</a></p> <p>Use the link above to view SDS, a current list of citations, and other product specific information.</p> <p>IP-western blot protocol: <a href="https://www.bethyl.com/content/protocol_IP_WB">https://www.bethyl.com/content/protocol_IP_WB</a></p>  |              |                   |                     |                     |                      |  |

This document certifies that this product has met all of the quality control standards defined by Bethyl Laboratories, Inc.  
Eric McIntush, PhD | Chief Scientific Officer

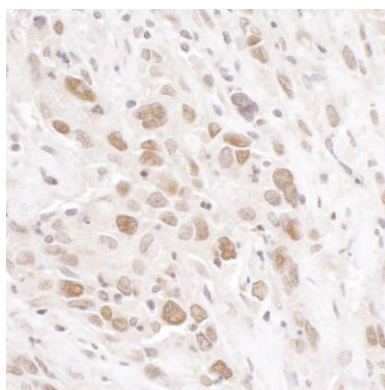
Date: June 21, 2019



**Detection of human Rif1 by western blot.** *Samples:* Whole cell lysate (50 µg) from HeLa, HEK293T, and Jurkat cells prepared using NETN lysis buffer. *Antibodies:* Affinity purified rabbit anti-Rif1 antibody A300-569A (lot A300-569A-5) used for WB at 0.4 µg/ml. *Detection:* Chemiluminescence with an exposure time of 3 minutes.



**Detection of human Rif1 by western blot of immunoprecipitates.** *Samples:* Whole cell lysate (0.5 or 1.0 mg per IP reaction; 20% of IP loaded) from HeLa cells prepared using NETN lysis buffer. *Antibodies:* Affinity purified rabbit anti-Rif1 antibody A300-569A (lot A300-569A-5) used for IP at 6 µg per reaction. Rif1 was also immunoprecipitated by rabbit anti-Rif1 antibody A300-567A. For blotting immunoprecipitated Rif1, A300-569A was used at 1 µg/ml. *Detection:* Chemiluminescence with an exposure time of 3 minutes.



**Detection of human RIF1 by immunohistochemistry.**

*Sample:* FFPE section of human breast carcinoma.

*Antibody:* Affinity purified rabbit anti-RIF1 (Cat. No. A300-569A Lot5) used at a dilution of 1:1,000 (1 µg/ml).

*Detection:* DAB