



SZABO SCANDIC

Part of Europa Biosite

Produktinformation



Forschungsprodukte & Biochemikalien



Zellkultur & Verbrauchsmaterial



Diagnostik & molekulare Diagnostik



Laborgeräte & Service

Weitere Information auf den folgenden Seiten!
See the following pages for more information!



Lieferung & Zahlungsart

siehe unsere [Liefer- und Versandbedingungen](#)

Zuschläge

- Mindermengenzuschlag
- Trockeneiszuschlag
- Gefahrgutzuschlag
- Expressversand

SZABO-SCANDIC HandelsgmbH

Quellenstraße 110, A-1100 Wien

T. +43(0)1 489 3961-0

F. +43(0)1 489 3961-7

mail@szabo-scandic.com

www.szabo-scandic.com

[linkedin.com/company/szaboscandic](https://www.linkedin.com/company/szaboscandic) 

BLM Antibody

Rabbit Polyclonal

Antigen Affinity Purified

Protein ID NP_031576.2

Catalog No. A300-570A-T

GeneID 12144

Lot No. A300-570A-T-1

APPLICATIONS	IP
SPECIES REACTIVITY	Mouse
AMOUNT	10 µl
CONCENTRATION	1000 µg/ml
STORAGE/SHELF LIFE	2 – 8°C / 1 year from date of receipt
PHYSICAL STATE	Liquid
BUFFER	Tris-citrate/phosphate buffer, pH 7 to 8 containing 0.09% Sodium Azide
ISOTYPE	IgG
ORIGIN	USA
PRODUCTION PROCEDURES	Antibody was affinity purified using an epitope specific to BIm immobilized on solid support. The epitope recognized by A300-570A-T maps to a region between residues 1 and 50 of mouse Bloom Syndrome Homolog using the numbering given in entry NP_031576.2 (GeneID 12144). Immunoglobulin concentration was determined by extinction coefficient: absorbance at 280 nm of 1.4 equals 1.0 mg of IgG.

APPLICATIONS Centrifuge tube to remove product from lid. Optimal working dilutions should be determined experimentally by the investigator. Prepare working dilution immediately before use.

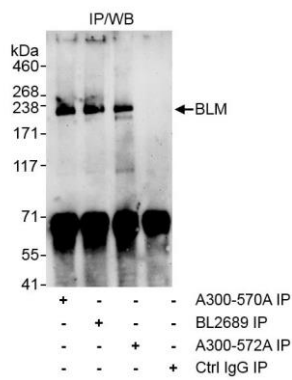
Western Blot Not recommended. Use rabbit anti-BLM antibody A300-572A for WB of mouse BLM.

Immunoprecipitation 1 – 4 µg/mg lysate

ADDITIONAL INFO <https://www.bethyl.com/product/A300-570A-T>

Use the link above to view SDS, a current list of citations, and other product specific information.
IP-western blot protocol: https://www.bethyl.com/content/protocol_IP_WB

This document certifies that this product has met all of the quality control standards defined by Bethyl Laboratories, Inc.
Michael Spencer, PhD Date: June 6, 2022



Detection of mouse BLM by western blot of immunoprecipitates. *Samples:* Whole cell lysate (1 mg for IP, 1 / 4 of IP loaded) from mouse NIH 3T3 cells. *Antibodies:* Affinity purified rabbit anti-BLM antibody A300-570A (lot A300-570A-1) used for IP at 3 µg/mg lysate. BLM was also immunoprecipitated using rabbit anti-BLM antibodies BL2689 and A300-572A at 3 µg/mg lysate. immunoprecipitatesd BLM was blotted using A300-572A at 1 µg/ml. *Detection:* Chemiluminescence with an exposure time of 3 minutes.