



# SZABO SCANDIC

Part of Europa Biosite

## Produktinformation



Forschungsprodukte & Biochemikalien



Zellkultur & Verbrauchsmaterial



Diagnostik & molekulare Diagnostik



Laborgeräte & Service

Weitere Information auf den folgenden Seiten!  
See the following pages for more information!



### Lieferung & Zahlungsart

siehe unsere [Liefer- und Versandbedingungen](#)

### Zuschläge

- Mindermengenzuschlag
- Trockeneiszuschlag
- Gefahrgutzuschlag
- Expressversand

### SZABO-SCANDIC HandelsgmbH

Quellenstraße 110, A-1100 Wien

T. +43(0)1 489 3961-0

F. +43(0)1 489 3961-7

[mail@szabo-scandic.com](mailto:mail@szabo-scandic.com)

[www.szabo-scandic.com](http://www.szabo-scandic.com)

[linkedin.com/company/szaboscandic](https://www.linkedin.com/company/szaboscandic) 

# BLM Antibody

Rabbit Polyclonal

Antigen Affinity Purified

Catalog No. A300-570A

Lot No. A300-570A-1

Protein ID NP\_031576.2

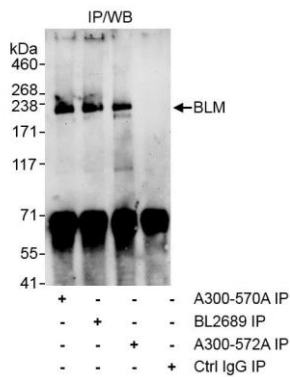
GeneID 12144



APPLICATIONS	IP				
SPECIES REACTIVITY	Mouse				
AMOUNT	100 µl				
CONCENTRATION	1000 µg/ml				
STORAGE/SHELF LIFE	2 – 8° C / 1 year from date of receipt				
PHYSICAL STATE	Liquid				
BUFFER	Tris-citrate/phosphate buffer, pH 7 to 8 containing 0.09% Sodium Azide				
ISOTYPE	IgG				
ORIGIN	USA				
PRODUCTION PROCEDURES	<p>Antibody was affinity purified using an epitope specific to BIm immobilized on solid support.</p> <p>The epitope recognized by A300-570A maps to a region between residues 1 and 50 of mouse Bloom Syndrome Homolog using the numbering given in entry NP_031576.2 (GeneID 12144).</p> <p>Immunoglobulin concentration was determined by extinction coefficient: absorbance at 280 nm of 1.4 equals 1.0 mg of IgG.</p>				
APPLICATIONS	<p>Centrifuge tube to remove product from lid. Optimal working dilutions should be determined experimentally by the investigator. Prepare working dilution immediately before use.</p> <table><tr><td>Western Blot</td><td>Not recommended. Use rabbit anti-BLM antibody A300-572A for WB of mouse BLM.</td></tr><tr><td>Immunoprecipitation</td><td>1 – 4 µg/mg lysate</td></tr></table>	Western Blot	Not recommended. Use rabbit anti-BLM antibody A300-572A for WB of mouse BLM.	Immunoprecipitation	1 – 4 µg/mg lysate
Western Blot	Not recommended. Use rabbit anti-BLM antibody A300-572A for WB of mouse BLM.				
Immunoprecipitation	1 – 4 µg/mg lysate				
APPLICATION NOTES	Western blot of immunoprecipitates performed using Normal Pig Serum (Cat. No. S100-020), Goat anti-Rabbit Light Chain HRP Conjugate (Cat. No. A120-113P) and 4-8% SDS-PAGE (link to IP-western blot protocol in Additional Info section below).				
ADDITIONAL INFO	<p><a href="https://www.bethyl.com/product/A300-570A">https://www.bethyl.com/product/A300-570A</a></p> <p>Use the link above to view SDS, a current list of citations, and other product specific information.</p> <p>IP-western blot protocol: <a href="https://www.bethyl.com/content/protocol_IP_WB">https://www.bethyl.com/content/protocol_IP_WB</a></p>				

This document certifies that this product has met all of the quality control standards defined by Bethyl Laboratories, Inc.  
Eric McIntush, PhD | Chief Scientific Officer

Date: June 21, 2019



**Detection of mouse BLM by western blot of immunoprecipitates.** *Samples:* Whole cell lysate (1 mg for IP, 1 / 4 of IP loaded) from mouse NIH 3T3 cells. *Antibodies:* Affinity purified rabbit anti-BLM antibody A300-570A (lot A300-570A-1) used for IP at 3 µg/mg lysate. BLM was also immunoprecipitated using rabbit anti-BLM antibodies BL2689 and A300-572A at 3 µg/mg lysate. immunoprecipitatesd BLM was blotted using A300-572A at 1 µg/ml. *Detection:* Chemiluminescence with an exposure time of 3 minutes.