



SZABO SCANDIC

Part of Europa Biosite

Produktinformation



Forschungsprodukte & Biochemikalien



Zellkultur & Verbrauchsmaterial



Diagnostik & molekulare Diagnostik



Laborgeräte & Service

Weitere Information auf den folgenden Seiten!
See the following pages for more information!



Lieferung & Zahlungsart

siehe unsere [Liefer- und Versandbedingungen](#)

Zuschläge

- Mindermengenzuschlag
- Trockeneiszuschlag
- Gefahrgutzuschlag
- Expressversand

SZABO-SCANDIC HandelsgmbH

Quellenstraße 110, A-1100 Wien

T. +43(0)1 489 3961-0

F. +43(0)1 489 3961-7

mail@szabo-scandic.com

www.szabo-scandic.com

[linkedin.com/company/szaboscandic](https://www.linkedin.com/company/szaboscandic) 

EDD1 Antibody

Rabbit Polyclonal

Antigen Affinity Purified

Protein ID NP_056986.2

Catalog No. A300-573A-T

GeneID 51366

Lot No. A300-573A-T-6

APPLICATIONS WB, IP, IHC

SPECIES REACTIVITY Human, Mouse

PRESUMED REACTIVITY Based on 100% sequence identity, this antibody is predicted to react with Rat

AMOUNT 10 µl

CONCENTRATION 1000 µg/ml

STORAGE/SHELF LIFE 2 – 8°C / 1 year from date of receipt

PHYSICAL STATE Liquid

BUFFER Tris-citrate/phosphate buffer, pH 7 to 8 containing 0.09% Sodium Azide

ISOTYPE IgG

ORIGIN USA

PRODUCTION PROCEDURES Antibody was affinity purified using an epitope specific to EDD1 immobilized on solid support.

The epitope recognized by A300-573A-T maps to a region between residues 600 and 650 of human E3 Ubiquitin Protein Ligase, HECT domain containing, 1 using the numbering given in entry NP_056986.2 (GeneID 51366).

APPLICATIONS Centrifuge tube to remove product from lid. Optimal working dilutions should be determined experimentally by the investigator. Prepare working dilution immediately before use.

Western Blot 1:2,000 – 1:10,000

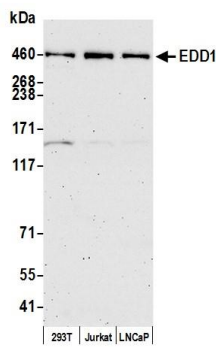
Immunoprecipitation 2 – 10 µg/mg lysate

Immunohistochemistry 1:500 to 1:2,000. Epitope retrieval with citrate buffer pH6.0 is recommended for FFPE tissue sections.

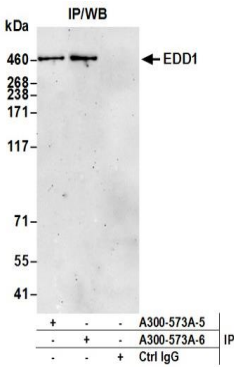
ADDITIONAL INFO <https://www.bethyl.com/product/A300-573A-T>

Use the link above to view SDS, a current list of citations, and other product specific information.
IP-western blot protocol: https://www.bethyl.com/content/protocol_IP_WB

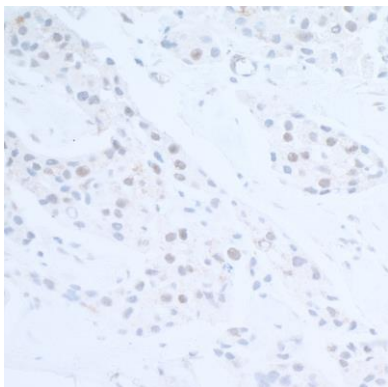
This document certifies that this product has met all of the quality control standards defined by Bethyl Laboratories, Inc.
Michael Spencer, PhD Date: June 6, 2022



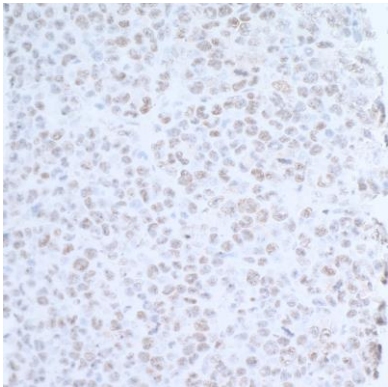
Detection of human EDD1 by western blot. *Samples:* Whole cell lysate (50 µg) from HEK293T, Jurkat, and LNCaP cells prepared using NETN lysis buffer. *Antibody:* Affinity purified Rabbit anti-EDD1 antibody A300-573A (lot A300-573A-6) used for WB at 0.4 µg/ml. *Detection:* Chemiluminescence with an exposure time of 3 minutes.



Detection of human EDD1 by western blot of immunoprecipitates. *Samples:* Whole cell lysate (1.0 mg per IP reaction; 20% of IP loaded) from HEK293T cells prepared using NETN lysis buffer. *Antibodies:* Affinity purified rabbit anti-EDD1 antibody A300-573A (lot A300-573A-6) used for IP at 6 µg per reaction. EDD1 was also immunoprecipitated by a previous lot of this antibody (lot A300-573A-5). For blotting immunoprecipitated EDD1, A300-573A was used at 0.1 µg/ml. Chemiluminescence with an exposure time of 3 minutes.



Detection of human EDD1 by immunohistochemistry. *Sample:* FFPE section of human lung carcinoma. *Antibody:* Affinity purified rabbit anti-EDD1 (Cat. No. A300-573A lot 6) used at a dilution of 1:1,000 (1 µg/ml). *Detection:* DAB



Detection of mouse EDD1 by immunohistochemistry. *Sample:* FFPE section of mouse plasmacytoma. *Antibody:* Affinity purified rabbit anti-EDD1 (Cat. No. A300-573A lot 6) used at a dilution of 1:1,000 (1 µg/ml). *Detection:* DAB