



SZABO SCANDIC

Part of Europa Biosite

Produktinformation



Forschungsprodukte & Biochemikalien



Zellkultur & Verbrauchsmaterial



Diagnostik & molekulare Diagnostik



Laborgeräte & Service

Weitere Information auf den folgenden Seiten!
See the following pages for more information!



Lieferung & Zahlungsart

siehe unsere [Liefer- und Versandbedingungen](#)

Zuschläge

- Mindermengenzuschlag
- Trockeneiszuschlag
- Gefahrgutzuschlag
- Expressversand

SZABO-SCANDIC HandelsgmbH

Quellenstraße 110, A-1100 Wien

T. +43(0)1 489 3961-0

F. +43(0)1 489 3961-7

mail@szabo-scandic.com

www.szabo-scandic.com

[linkedin.com/company/szaboscandic](https://www.linkedin.com/company/szaboscandic) 

INPPL1 /SHIP2 Antibody

Rabbit Polyclonal

Antigen Affinity Purified

Protein ID NP_001558.2

Catalog No. A300-574A

GeneID 3636

Lot No. A300-574A-2



APPLICATIONS	WB, IP, IHC
SPECIES REACTIVITY	Human, Mouse
PRESUMED REACTIVITY	Based on 100% sequence identity, this antibody is predicted to react with Rat
AMOUNT	100 µl
CONCENTRATION	1000 µg/ml
STORAGE/SHELF LIFE	2 – 8° C / 1 year from date of receipt
PHYSICAL STATE	Liquid
BUFFER	Tris-citrate/phosphate buffer, pH 7 to 8 containing 0.09% Sodium Azide
ISOTYPE	IgG
ORIGIN	USA
PRODUCTION PROCEDURES	Antibody was affinity purified using an epitope specific to INPPL1 /SHIP2 immobilized on solid support.

The epitope recognized by A300-574A maps to a region between residues 100 and 150 of human inositol polyphosphate phosphatase-like 1 using the numbering given in entry NP_001558.2 (GeneID 3636).

Immunoglobulin concentration was determined by extinction coefficient: absorbance at 280 nm of 1.4 equals 1.0 mg of IgG.

APPLICATIONS Centrifuge tube to remove product from lid. Optimal working dilutions should be determined experimentally by the investigator. Prepare working dilution immediately before use.

Western Blot 1:2,000 – 1:10,000

Immunoprecipitation 2 – 10 µg/mg lysate

Immunohistochemistry 1:500 – 1:2,000. Epitope retrieval with citrate buffer pH 6.0 or Tris-EDTA pH 9.0 is recommended for FFPE tissue sections.

APPLICATION NOTES Western blot of immunoprecipitates performed using Normal Pig Serum (Cat. No. S100-020), Goat anti-Rabbit Light Chain HRP Conjugate (Cat. No. A120-113P) and 4-8% SDS-PAGE (link to IP-western blot protocol in Additional Info section below).

Western blot of lysates performed using standard western blot reagents and 4-8% SDS-PAGE.

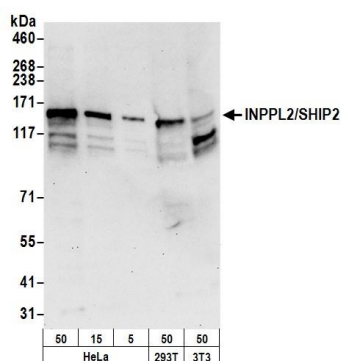
IHC HUMAN CONTROLS Colon Carcinoma

ADDITIONAL INFO <https://www.bethyl.com/product/A300-574A>

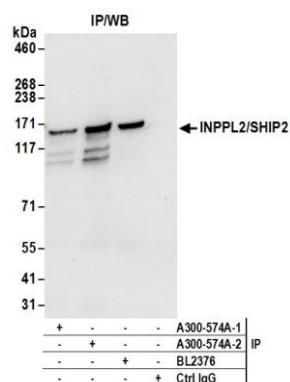
Use the link above to view SDS, a current list of citations, and other product specific information.

IP-western blot protocol: https://www.bethyl.com/content/protocol_IP_WB

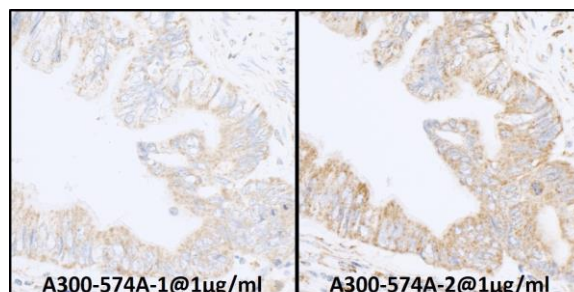
This document certifies that this product has met all of the quality control standards defined by Bethyl Laboratories, Inc.
Eric McIntush, PhD | Chief Scientific Officer Date: June 21, 2019



Detection of human and mouse INPPL2/SHIP2 by western blot. *Samples:* Whole cell lysate (50, 15, 5 µg) from HeLa and (50 µg) from HEK293T and mouse NIH 3T3 cells prepared using NETN lysis buffer. *Antibody:* Affinity purified rabbit anti-INPPL2/SHIP2 antibody A300-574A (lot A300-574A-2) used for WB at 0.1 µg/ml. *Detection:* Chemiluminescence with an exposure time of 30 seconds.



Detection of human INPPL2/SHIP2 by western blot of immunoprecipitates. *Samples:* Whole cell lysate (0.5 or 1.0 mg per IP reaction; 20% of IP loaded) from HeLa cells prepared using NETN lysis buffer. *Antibodies:* Affinity purified rabbit anti-INPPL2/SHIP2 antibody A300-574A (lot A300-574A-2) used for IP at 6 µg per reaction. INPPL2/SHIP2 was also immunoprecipitated by a previous lot of this antibody (A300-574A-1) and rabbit anti-INPPL2/SHIP2 antibody BL2376. For blotting immunoprecipitated INPPL2/SHIP2, A300-574A was used at 0.4 µg/ml. *Detection:* Chemiluminescence with an exposure time of 10 seconds.



Detection of human expndtw-6 INPPL1/SHIP2 by immunohistochemistry. *Sample:* FFPE serial sections of human colon carcinoma. *Antibody:* Affinity purified rabbit anti-expndtw-6 INPPL1/SHIP2 Cat. No. A300-574A Lot 1 (left) and Lot 2 (right) used at a dilution of 1:1,000 (1 µg/ml). *Detection:* DAB