



# SZABO SCANDIC

Part of Europa Biosite

## Produktinformation



Forschungsprodukte & Biochemikalien



Zellkultur & Verbrauchsmaterial



Diagnostik & molekulare Diagnostik



Laborgeräte & Service

Weitere Information auf den folgenden Seiten!  
See the following pages for more information!



### Lieferung & Zahlungsart

siehe unsere [Liefer- und Versandbedingungen](#)

### Zuschläge

- Mindermengenzuschlag
- Trockeneiszuschlag
- Gefahrgutzuschlag
- Expressversand

### SZABO-SCANDIC HandelsgmbH

Quellenstraße 110, A-1100 Wien

T. +43(0)1 489 3961-0

F. +43(0)1 489 3961-7

[mail@szabo-scandic.com](mailto:mail@szabo-scandic.com)

[www.szabo-scandic.com](http://www.szabo-scandic.com)

[linkedin.com/company/szaboscandic](https://www.linkedin.com/company/szaboscandic) 

# NF2 Antibody

Rabbit Polyclonal

Antigen Affinity Purified

Protein ID NP\_000259.1

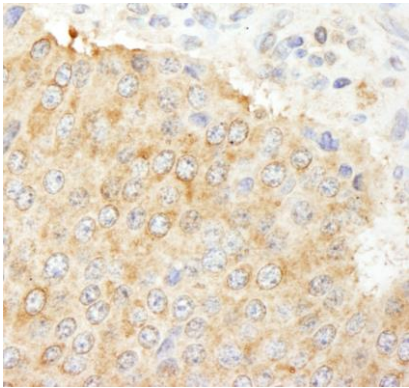
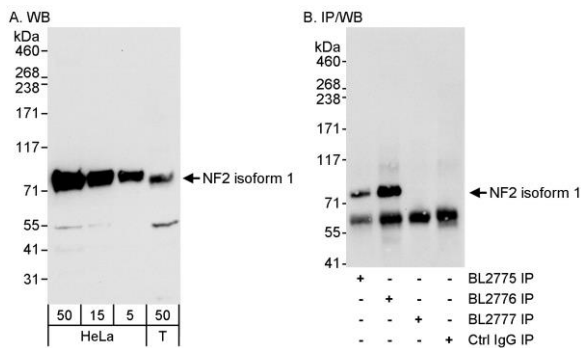
Catalog No. A300-578A-T

GeneID 4771

Lot No. A300-578A-T-1

<b>APPLICATIONS</b>	WB, IP, IHC
<b>SPECIES REACTIVITY</b>	Human
<b>PRESUMED REACTIVITY</b>	Based on 100% sequence identity, this antibody is predicted to react with Mouse
<b>AMOUNT</b>	10 µl
<b>CONCENTRATION</b>	1000 µg/ml
<b>STORAGE/SHELF LIFE</b>	2 – 8°C / 1 year from date of receipt
<b>PHYSICAL STATE</b>	Liquid
<b>BUFFER</b>	Tris-citrate/phosphate buffer, pH 7 to 8 containing 0.09% Sodium Azide
<b>ISOTYPE</b>	IgG
<b>ORIGIN</b>	USA
<b>PRODUCTION PROCEDURES</b>	Antibody was affinity purified using an epitope specific to NF2 immobilized on solid support.  The epitope recognized by A300-578A-T maps to a region between residue 550 and the C-terminus (residue 595) of human Neurofibromin 2 using the numbering given in entry NP_000259.1 (GeneID 4771). This epitope is common to NF2 isoforms 1 and 9 (Mer162).
<b>APPLICATIONS</b>	Centrifuge tube to remove product from lid. Optimal working dilutions should be determined experimentally by the investigator. Prepare working dilution immediately before use.  Western Blot 1:5,000 – 1:15,000  Immunoprecipitation 1 – 4 µg/mg lysate  Immunohistochemistry 1:1,000 – 1:5,000. Epitope retrieval with citrate buffer pH 6.0 is recommended for FFPE tissue sections.
<b>ADDITIONAL INFO</b>	<a href="https://www.bethyl.com/product/A300-578A-T">https://www.bethyl.com/product/A300-578A-T</a> Use the link above to view SDS, a current list of citations, and other product specific information. IP-western blot protocol: <a href="https://www.bethyl.com/content/protocol_IP_WB">https://www.bethyl.com/content/protocol_IP_WB</a>

This document certifies that this product has met all of the quality control standards defined by Bethyl Laboratories, Inc.  
Michael Spencer, PhD Date: June 6, 2022



**Detection of Isoform 1 of human NF2 by western blot and immunoprecipitation.** *Samples:* Whole cell lysate from HeLa (5, 15, and 15 µg for WB; 1 mg for IP, 1/4 of IP reaction loaded) and NIH293 (50 µg for WB) cells. *Antibody:* Affinity purified rabbit anti-NF2 antibody BL2776 (Cat. No. A300-578A) used for western blot at 0.1 µg/ml (A) and 1 µg/ml (B) for IP at 3 µg/mg lysate for IP (B). Isoform 1 of NF2 was also immunoprecipitated using rabbit anti-NF2 antibody BL2775, which is to an upstream epitope also found in isoform 2. Isoform 1 was not immunoprecipitated using rabbit anti-NF2 isoform 2 antibody BL2777 (Cat. No. A300-579A). *Detection:* Chemiluminescence with an exposure time of 10 seconds (A and B).

**Detection of human expndtw-6 NF2 by immunohistochemistry.** *Sample:* FFPE section of human pancreatic islet cell tumor. *Antibody:* Affinity purified rabbit anti-expndtw-6 NF2 (Cat. No. A300-578A Lot1) used at a dilution of 1:1,000 (1µg/ml). *Detection:* DAB