



SZABO SCANDIC

Part of Europa Biosite

Produktinformation



Forschungsprodukte & Biochemikalien



Zellkultur & Verbrauchsmaterial



Diagnostik & molekulare Diagnostik



Laborgeräte & Service

Weitere Information auf den folgenden Seiten!
See the following pages for more information!



Lieferung & Zahlungsart

siehe unsere [Liefer- und Versandbedingungen](#)

Zuschläge

- Mindermengenzuschlag
- Trockeneiszuschlag
- Gefahrgutzuschlag
- Expressversand

SZABO-SCANDIC HandelsgmbH

Quellenstraße 110, A-1100 Wien

T. +43(0)1 489 3961-0

F. +43(0)1 489 3961-7

mail@szabo-scandic.com

www.szabo-scandic.com

[linkedin.com/company/szaboscandic](https://www.linkedin.com/company/szaboscandic) 

NF2 Antibody

Rabbit Polyclonal

Antigen Affinity Purified

Catalog No. A300-579A

Lot No. A300-579A-1

Protein ID NP_057502.2

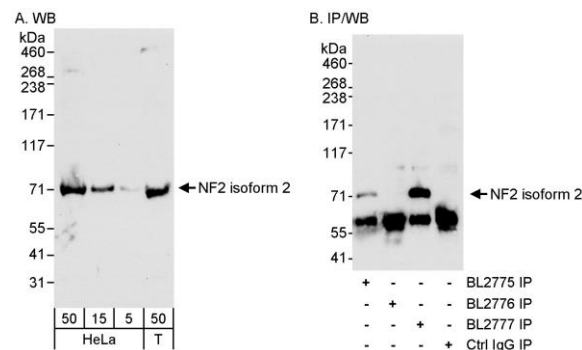
GeneID 4771



APPLICATIONS	WB, IP
SPECIES REACTIVITY	Human
PRESUMED REACTIVITY	Based on 100% sequence identity, this antibody is predicted to react with Rat
AMOUNT	100 µl
CONCENTRATION	1000 µg/ml
STORAGE/SHELF LIFE	2 – 8° C / 1 year from date of receipt
PHYSICAL STATE	Liquid
BUFFER	Tris-citrate/phosphate buffer, pH 7 to 8 containing 0.09% Sodium Azide
ISOTYPE	IgG
ORIGIN	USA
PRODUCTION PROCEDURES	<p>Antibody was affinity purified using an epitope specific to NF2 immobilized on solid support.</p> <p>The epitope recognized by A300-579A maps to a region between residue 550 and the C-terminus (residue 590) of human Neurofibromin 2 using the numbering given in entry NP_057502.2 (GeneID 4771). This epitope is common to NF2 isoforms 2, 5 (NP_861966.1), 6 (NP_861967.1) and 7 (NP_861968.1).</p> <p>Immunoglobulin concentration was determined by extinction coefficient: absorbance at 280 nm of 1.4 equals 1.0 mg of IgG.</p>
APPLICATIONS	<p>Centrifuge tube to remove product from lid. Optimal working dilutions should be determined experimentally by the investigator. Prepare working dilution immediately before use.</p> <p>Western Blot 1:5,000 – 1:15,000</p> <p>Immunoprecipitation 1 – 4 µg/mg lysate</p>
APPLICATION NOTES	<p>Western blot of immunoprecipitates performed using Normal Pig Serum (Cat. No. S100-020), Goat anti-Rabbit Light Chain HRP Conjugate (Cat. No. A120-113P) and 4-8% SDS-PAGE (link to IP-western blot protocol in Additional Info section below).</p> <p>Western blot of lysates performed using standard western blot reagents and 4-8% SDS-PAGE.</p>
ADDITIONAL INFO	<p>https://www.bethyl.com/product/A300-579A</p> <p>Use the link above to view SDS, a current list of citations, and other product specific information.</p> <p>IP-western blot protocol: https://www.bethyl.com/content/protocol_IP_WB</p>

This document certifies that this product has met all of the quality control standards defined by Bethyl Laboratories, Inc.
Eric McIntush, PhD | Chief Scientific Officer

Date: June 21, 2019



Detection of Isoform 2 of human NF2 by western blot and immunoprecipitation. *Samples:* Whole cell lysate from HeLa (5, 15, and 15 µg for WB; 1 mg for IP, 1/4 of IP reaction loaded) and NIH293 (50 µg for WB) cells. *Antibody:* Affinity purified rabbit anti-NF2 antibody BL2777 (Cat. No. A300-579A) used for western blot at 0.1 µg/ml (A) and 1 µg/ml (B) for IP at 3 µg/mg lysate for IP (B). Isoform 2 of NF2 was also immunoprecipitated using rabbit anti-NF2 antibody BL2775, which is to an upstream epitope also found in isoform 1. Isoform 2 was not immunoprecipitated using rabbit anti-NF2 isoform 1 antibody BL2776 (Cat. No. A300-578A). *Detection:* Chemiluminescence with an exposure time of 30 seconds (A and B).