



SZABO SCANDIC

Part of Europa Biosite

Produktinformation



Forschungsprodukte & Biochemikalien



Zellkultur & Verbrauchsmaterial



Diagnostik & molekulare Diagnostik



Laborgeräte & Service

Weitere Information auf den folgenden Seiten!
See the following pages for more information!



Lieferung & Zahlungsart

siehe unsere [Liefer- und Versandbedingungen](#)

Zuschläge

- Mindermengenzuschlag
- Trockeneiszuschlag
- Gefahrgutzuschlag
- Expressversand

SZABO-SCANDIC HandelsgmbH

Quellenstraße 110, A-1100 Wien

T. +43(0)1 489 3961-0

F. +43(0)1 489 3961-7

mail@szabo-scandic.com

www.szabo-scandic.com

[linkedin.com/company/szaboscandic](https://www.linkedin.com/company/szaboscandic) 

WASP Antibody

Rabbit Polyclonal

Antigen Affinity Purified

Protein ID NP_000368.1

Catalog No. A300-581A

GeneID 7454

Lot No. A300-581A-1



APPLICATIONS	WB, IP
SPECIES REACTIVITY	Human
AMOUNT	100 µl
CONCENTRATION	200 µg/ml
STORAGE/SHELF LIFE	2 – 8° C / 1 year from date of receipt
PHYSICAL STATE	Liquid
BUFFER	Tris-buffered Saline containing 0.1% BSA and 0.09% Sodium Azide
ISOTYPE	IgG
ORIGIN	USA
PRODUCTION PROCEDURES	Antibody was affinity purified using an epitope specific to WASP immobilized on solid support.

The epitope recognized by A300-581A maps to a region between residue 400 and the C-terminus (residue 462) of human Wiskott-Aldrich Syndrome Protein using the numbering given in entry NP_000368.1 (GeneID 7454).

Immunoglobulin concentration was determined by extinction coefficient: absorbance at 280 nm of 1.4 equals 1.0 mg of IgG.

APPLICATIONS Centrifuge tube to remove product from lid. Optimal working dilutions should be determined experimentally by the investigator. Prepare working dilution immediately before use.

Western Blot 1:2,000 – 1:10,000

Immunoprecipitation 1 – 4 µg/mg lysate

APPLICATION NOTES Western blot of immunoprecipitates performed using Normal Pig Serum (Cat. No. S100-020), Goat anti-Rabbit Light Chain HRP Conjugate (Cat. No. A120-113P) and 4-20% SDS-PAGE (link to IP-western blot protocol in Additional Info section below).

Western blot of lysates performed using standard western blot reagents and 4-20% SDS-PAGE.

ADDITIONAL INFO <https://www.bethyl.com/product/A300-581A>

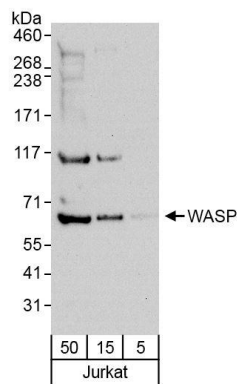
Use the link above to view SDS, a current list of citations, and other product specific information.

IP-western blot protocol https://www.bethyl.com/content/protocol_IP_WB

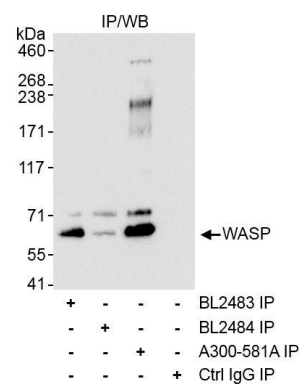
This document certifies that this product has met all of the quality control standards defined by Bethyl Laboratories, Inc.

Eric McIntush, PhD | Chief Scientific Officer

Date: October 16, 2019



Detection of human WASP by western blot. *Samples:* Whole cell lysate from Jurkat cells. *Antibodies:* Affinity purified rabbit anti-WASP antibody A300-581A (lot A300-581A-1) used for WB at 0.4 µg/ml. *Detection:* Chemiluminescence with exposure time of 30 seconds.



Detection of human WASP by western blot of immunoprecipitates. *Samples:* Whole cell lysate (1 mg for IP, 1 / 4 of IP reaction loaded) from Jurkat cells. *Antibodies:* Affinity purified rabbit anti-WASP antibody A300-581A (lot A300-581A-1) used for IP at 3 µg/mg lysate. WASP was also immunoprecipitated using rabbit anti-WASP antibodies BL2483 and BL2484. For blotting immunoprecipitated WASP, A300-581A was used at 1 µg/ml. *Detection:* Chemiluminescence with exposure time 10 seconds.