



SZABO SCANDIC

Part of Europa Biosite

Produktinformation



Forschungsprodukte & Biochemikalien



Zellkultur & Verbrauchsmaterial



Diagnostik & molekulare Diagnostik



Laborgeräte & Service

Weitere Information auf den folgenden Seiten!
See the following pages for more information!



Lieferung & Zahlungsart

siehe unsere [Liefer- und Versandbedingungen](#)

Zuschläge

- Mindermengenzuschlag
- Trockeneiszuschlag
- Gefahrgutzuschlag
- Expressversand

SZABO-SCANDIC Handels GmbH

Quellenstraße 110, A-1100 Wien

T. +43(0)1 489 3961-0

F. +43(0)1 489 3961-7

mail@szabo-scandic.com

www.szabo-scandic.com

[linkedin.com/company/szaboscandic](https://www.linkedin.com/company/szaboscandic) 

NONO Antibody

Rabbit Polyclonal

Antigen Affinity Purified

Protein ID NP_031389.3

Catalog No. A300-582A

GeneID 4841

Lot No. A300-582A-2



APPLICATIONS WB, IP, IHC

SPECIES REACTIVITY Human

PRESUMED REACTIVITY Based on 100% sequence identity, this antibody is predicted to react with Mouse, Rat and Orangutan

AMOUNT 100 µl

CONCENTRATION 200 µg/ml

STORAGE/SHELF LIFE 2 – 8° C / 1 year from date of receipt

PHYSICAL STATE Liquid

BUFFER Tris-buffered Saline containing 0.1% BSA and 0.09% Sodium Azide

ISOTYPE IgG

ORIGIN USA

PRODUCTION PROCEDURES Antibody was affinity purified using an epitope specific to NONO immobilized on solid support.

The epitope recognized by A300-582A maps to a region between residues 1 and 50 of human Non-POU Domain Containing, Octamer-binding using the numbering given in entry NP_031389.3 (GeneID 4841).

Immunoglobulin concentration was determined by extinction coefficient: absorbance at 280 nm of 1.4 equals 1.0 mg of IgG.

APPLICATIONS Centrifuge tube to remove product from lid. Optimal working dilutions should be determined experimentally by the investigator. Prepare working dilution immediately before use.

Western Blot 1:2,000 – 1:10,000

Immunoprecipitation 2 – 10 µg/mg lysate

Immunohistochemistry 1:100 to 1:500. Epitope retrieval with citrate buffer pH6.0 is recommended for FFPE tissue sections.

IHC HUMAN CONTROLS Breast Carcinoma, Ovarian Carcinoma, Prostate Carcinoma

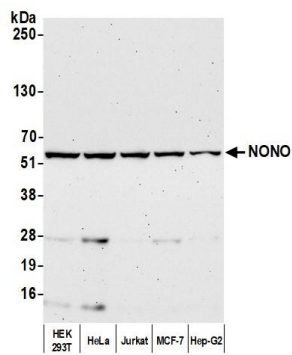
IHC MOUSE CONTROLS Teratoma

ADDITIONAL INFO <https://www.bethyl.com/product/A300-582A>

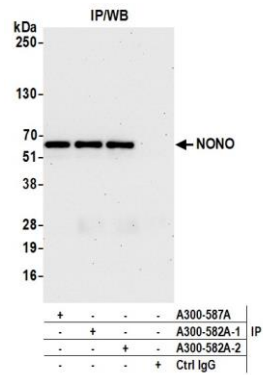
Use the link above to view SDS, a current list of citations, and other product specific information.

IP-western blot protocol: https://www.bethyl.com/content/protocol_IP_WB

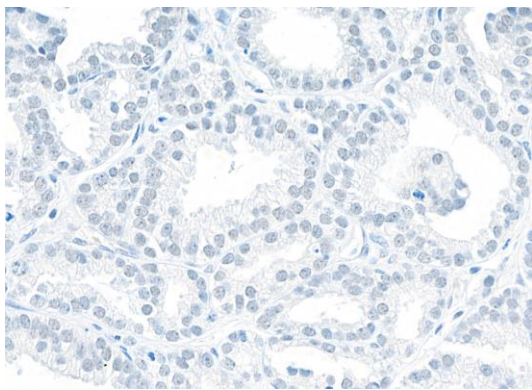
This document certifies that this product has met all of the quality control standards defined by Bethyl Laboratories, Inc.
Brian McWilliams, PhD Date: August 24, 2021



Detection of human NONO by western blot. *Samples:* Whole cell lysate (50 µg) from HEK293T, HeLa, Jurkat, MCF-7, and Hep-G2 cells prepared using NETN lysis buffer. *Antibody:* Affinity purified rabbit anti-NONO antibody (A300-582A lot 2) used for WB at 0.04 µg/ml. *Detection:* Chemiluminescence with an exposure time of 75 seconds.



Detection of human NONO by western blot of immunoprecipitates. *Samples:* Whole cell lysate (1.0 mg per IP reaction; 50% of IP loaded) from HEK293T cells prepared using NETN lysis buffer. *Antibodies:* Affinity purified rabbit anti-NONO antibody (A300-582A lot 2) used for IP at 6 µg per reaction. NONO was also immunoprecipitated by a previous lot of this antibody (A300-582A lot 1) and a second antibody against a different epitope of NONO (A300-587A). For blotting immunoprecipitated NONO, A300-582A was used at 0.2 µg/ml. *Detection:* Chemiluminescence with an exposure time of 30 seconds.



Detection of human NONO by immunohistochemistry. *Sample:* FFPE section of human prostate carcinoma. *Antibody:* Affinity purified rabbit anti- NONO (A300-582A lot 2) used at a dilution of 1:100 (2µg/ml). *Detection:* DAB

