



# SZABO SCANDIC

Part of Europa Biosite

## Produktinformation



Forschungsprodukte & Biochemikalien



Zellkultur & Verbrauchsmaterial



Diagnostik & molekulare Diagnostik



Laborgeräte & Service

Weitere Information auf den folgenden Seiten!  
See the following pages for more information!



### Lieferung & Zahlungsart

siehe unsere [Liefer- und Versandbedingungen](#)

### Zuschläge

- Mindermengenzuschlag
- Trockeneiszuschlag
- Gefahrgutzuschlag
- Expressversand

### SZABO-SCANDIC HandelsgmbH

Quellenstraße 110, A-1100 Wien

T. +43(0)1 489 3961-0

F. +43(0)1 489 3961-7

[mail@szabo-scandic.com](mailto:mail@szabo-scandic.com)

[www.szabo-scandic.com](http://www.szabo-scandic.com)

[linkedin.com/company/szaboscandic](https://www.linkedin.com/company/szaboscandic) 

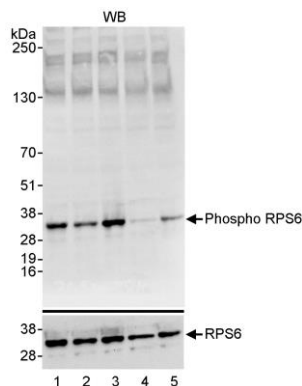
# Phospho RPS6 (S235/236) Antibody

Rabbit Polyclonal

Antigen Affinity Purified	Protein ID	NP_001001.2
Catalog No. A300-584A-T	GeneID	6194
Lot No. A300-584A-T-1		

APPLICATIONS	WB
SPECIES REACTIVITY	Human
PRESUMED REACTIVITY	Based on 100% sequence identity, this antibody is predicted to react with Mouse, Rat, X. laevis, Chicken and Bovine
AMOUNT	10 µl
CONCENTRATION	200 µg/ml
STORAGE/SHELF LIFE	2 – 8°C / 1 year from date of receipt
PHYSICAL STATE	Liquid
BUFFER	Tris-buffered Saline containing 0.1% BSA and 0.09% Sodium Azide
ISOTYPE	IgG
ORIGIN	USA
PRODUCTION PROCEDURES	<p>Antibody was affinity purified using a synthetic peptide representing phosphorylation at serine 235 and serine 236 and surrounding residues of RPS6 immobilized on solid support.</p> <p>Immunogen for A300-584A-T was a phosphorylated synthetic peptide, which represented a portion of human Ribosomal Protein S6 (GeneID 6194) around serine 235 and serine 236 according to the numbering given in entry NP_001001.2.</p>
APPLICATIONS	<p>Centrifuge tube to remove product from lid. Optimal working dilutions should be determined experimentally by the investigator. Prepare working dilution immediately before use.</p> <p>Western Blot 1:2,500 – 1:10,000</p>
ADDITIONAL INFO	<p><a href="https://www.bethyl.com/product/A300-584A-T">https://www.bethyl.com/product/A300-584A-T</a></p> <p>Use the link above to view SDS, a current list of citations, and other product specific information.</p>

This document certifies that this product has met all of the quality control standards defined by Bethyl Laboratories, Inc.  
Michael Spencer, PhD Date: June 6, 2022



**Detection of human Phospho RPS6 (S235/S236) by western blot.** *Samples:* Whole cell lysate (35 µg) from HeLa cells. Treatments consisted of growth in serum containing media (lane 1) or cultured for 24 hours in serum free media (lanes 2 to 5). At 24h, serum was replaced for 1 h (lanes 2 and 3) or serum starvation was continued (lanes 4 and 5) without rapamycin (lanes 3 and 5) with 50nM Rapamycin (lanes 2 and 4). *Antibodies:* Affinity purified rabbit anti-phospho RPS6 (S235/S236) antibody (Cat. No. A300-584A) used at 0.04 µg/ml (upper panel). The blot was stripped and re-blotted for total RPS6 using affinity purified rabbit anti-RPS6 antibody (Cat. No. A300-557A) at 0.04 µg/ml. *Detection:* Chemiluminescence with exposure times of 10 seconds (upper panel) or 30 seconds (lower panel).