



SZABO SCANDIC

Part of Europa Biosite

Produktinformation



Forschungsprodukte & Biochemikalien



Zellkultur & Verbrauchsmaterial



Diagnostik & molekulare Diagnostik



Laborgeräte & Service

Weitere Information auf den folgenden Seiten!
See the following pages for more information!



Lieferung & Zahlungsart

siehe unsere [Liefer- und Versandbedingungen](#)

Zuschläge

- Mindermengenzuschlag
- Trockeneiszuschlag
- Gefahrgutzuschlag
- Expressversand

SZABO-SCANDIC HandelsgmbH

Quellenstraße 110, A-1100 Wien

T. +43(0)1 489 3961-0

F. +43(0)1 489 3961-7

mail@szabo-scandic.com

www.szabo-scandic.com

[linkedin.com/company/szaboscandic](https://www.linkedin.com/company/szaboscandic) 

Phospho RPS6 (S235/236) Antibody

Rabbit Polyclonal

Antigen Affinity Purified

Protein ID NP_001001.2

Catalog No. A300-584A

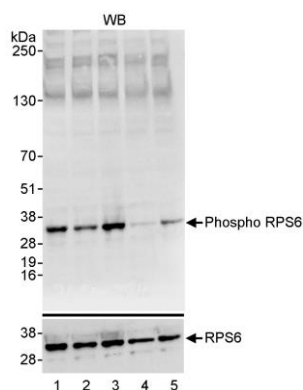
GeneID 6194

Lot No. A300-584A-1



APPLICATIONS	WB
SPECIES REACTIVITY	Human
PRESUMED REACTIVITY	Based on 100% sequence identity, this antibody is predicted to react with Mouse, Rat, X. laevis, Chicken and Bovine
AMOUNT	100 µl
CONCENTRATION	200 µg/ml
STORAGE/SHELF LIFE	2 – 8° C / 1 year from date of receipt
PHYSICAL STATE	Liquid
BUFFER	Tris-buffered Saline containing 0.1% BSA and 0.09% Sodium Azide
ISOTYPE	IgG
ORIGIN	USA
PRODUCTION PROCEDURES	<p>Antibody was affinity purified using a synthetic peptide representing phosphorylation at serine 235 and serine 236 and surrounding residues of RPS6 immobilized on solid support.</p> <p>Immunogen for A300-584A was a phosphorylated synthetic peptide, which represented a portion of human Ribosomal Protein S6 (GeneID 6194) around serine 235 and serine 236 according to the numbering given in entry NP_001001.2.</p> <p>Immunoglobulin concentration was determined by extinction coefficient: absorbance at 280 nm of 1.4 equals 1.0 mg of IgG.</p>
APPLICATIONS	<p>Centrifuge tube to remove product from lid. Optimal working dilutions should be determined experimentally by the investigator. Prepare working dilution immediately before use.</p> <p>Western Blot 1:2,500 – 1:10,000</p>
APPLICATION NOTES	Western blot of lysates performed using standard western blot reagents and 4–20% SDS-PAGE.
ADDITIONAL INFO	<p>https://www.bethyl.com/product/A300-584A</p> <p>Use the link above to view SDS, a current list of citations, and other product specific information.</p>

This document certifies that this product has met all of the quality control standards defined by Bethyl Laboratories, Inc.
Eric McIntush, PhD | Chief Scientific Officer Date: June 21, 2019



Detection of human Phospho RPS6 (S235/S236) by western blot. *Samples:* Whole cell lysate (35 µg) from HeLa cells. Treatments consisted of growth in serum containing media (lane 1) or cultured for 24 hours in serum free media (lanes 2 to 5). At 24h, serum was replaced for 1 h (lanes 2 and 3) or serum starvation was continued (lanes 4 and 5) without rapamycin (lanes 3 and 5) with 50nM Rapamycin (lanes 2 and 4). *Antibodies:* Affinity purified rabbit anti-phospho RPS6 (S235/S236) antibody (Cat. No. A300-584A) used at 0.04 µg/ml (upper panel). The blot was stripped and re-blotted for total RPS6 using affinity purified rabbit anti-RPS6 antibody (Cat. No. A300-557A) at 0.04 µg/ml. *Detection:* Chemiluminescence with exposure times of 10 seconds (upper panel) or 30 seconds (lower panel).