



SZABO SCANDIC

Part of Europa Biosite

Produktinformation



Forschungsprodukte & Biochemikalien



Zellkultur & Verbrauchsmaterial



Diagnostik & molekulare Diagnostik



Laborgeräte & Service

Weitere Information auf den folgenden Seiten!
See the following pages for more information!



Lieferung & Zahlungsart

siehe unsere [Liefer- und Versandbedingungen](#)

Zuschläge

- Mindermengenzuschlag
- Trockeneiszuschlag
- Gefahrgutzuschlag
- Expressversand

SZABO-SCANDIC HandelsgmbH

Quellenstraße 110, A-1100 Wien

T. +43(0)1 489 3961-0

F. +43(0)1 489 3961-7

mail@szabo-scandic.com

www.szabo-scandic.com

[linkedin.com/company/szaboscandic](https://www.linkedin.com/company/szaboscandic) 

NONO Antibody

Rabbit Polyclonal

Antigen Affinity Purified	RefSeq ID	NP_031389.3
Catalog No. A300-587A	Uniprot ID	Q15233
Lot No. 3	GeneID	4841

APPLICATIONS	WB, IP, IHC
SPECIES REACTIVITY	Human, Mouse, Rat
PRESUMED REACTIVITY	Based on 100% sequence identity, this antibody is predicted to react with Orangutan
AMOUNT	100 µl
CONCENTRATION	200 µg/ml
STORAGE/SHELF LIFE	2 – 8°C / 1 year from date of receipt
PHYSICAL STATE	Liquid
BUFFER	Tris-buffered Saline containing 0.1% BSA and 0.09% Sodium Azide
ISOTYPE	IgG
ORIGIN	USA
PRODUCTION PROCEDURES	Antibody was affinity purified using an epitope specific to NONO immobilized on solid support.

The epitope recognized by A300-587A maps to a region between residues 350 and 400 of human Non-POU Domain Containing, Octamer-binding using the numbering given in entry NP_031389.3 (GeneID 4841).

Immunoglobulin concentration was determined using Beer's Law where 1mg/mL IgG has an A280 of 1.4.

APPLICATIONS Centrifuge tube to remove product from lid. Optimal working dilutions should be determined experimentally by the investigator. Prepare working dilution immediately before use.

Western Blot	1:2,000 – 1:10,000
Immunoprecipitation	2 – 10 µg/mg lysate
Immunohistochemistry	1:200 – 1:1000. Epitope retrieval with citrate buffer pH6.0 is recommended for FFPE tissue sections.

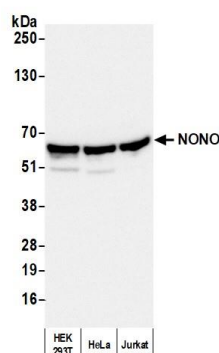
IHC HUMAN CONTROLS Bladder Cell Carcinoma, Breast Carcinoma, Prostate Carcinoma, Stomach Adenocarcinoma

IHC MOUSE CONTROLS Large Intestine, Squamous Cell Carcinoma, Teratoma

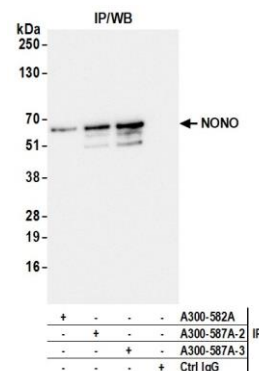
ADDITIONAL INFO <https://www.fortislifesciences.com/p/A300-587A>

Use the link above to view SDS, a current list of citations, and other product specific information.

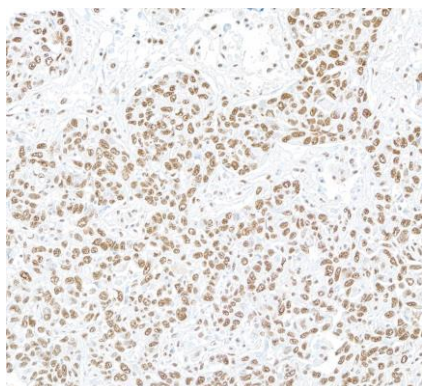
This document certifies that this product has met all of the quality control standards defined by Bethyl Laboratories, Inc.
Michael Spencer, PhD Date: December 19, 2023



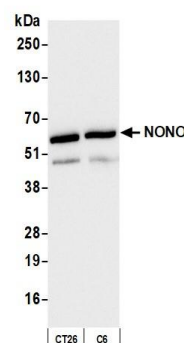
Detection of human NONO by western blot. *Samples:* Whole cell lysate (25 µg) from HEK293T, HeLa, and Jurkat cells prepared using NETN lysis buffer. *Antibody:* Affinity purified rabbit anti-NONO antibody (A300-587A lot 3) used for WB at 0.04 µg/ml. *Detection:* Chemiluminescence with an exposure time of 3 seconds.



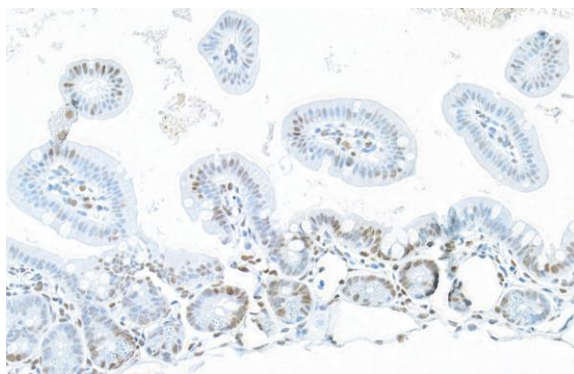
Detection of human NONO by western blot of immunoprecipitates. *Samples:* Whole cell lysate (1.0 mg per IP reaction; 20% of IP loaded) from HEK293T cells prepared using NETN lysis buffer. *Antibodies:* Affinity purified rabbit anti-NONO antibody (A300-587A lot 3) used for IP at 6 µg per reaction. NONO was also immunoprecipitated by a previous lot of this antibody (A300-587A lot 2) and a second antibody against a different epitope of NONO (A300-582A). For blotting immunoprecipitated NONO, A300-587A was used at 0.04 µg/ml. *Detection:* Chemiluminescence with an exposure time of 1 second.



Detection of human NONO by immunohistochemistry. *Sample:* FFPE section of human breast carcinoma. *Antibody:* Affinity purified rabbit anti-NONO (Cat. No. A300-587A Lot2) used at a dilution of 1:1,000 (0.2 µg/ml). *Detection:* DAB



Detection of mouse and rat NONO by western blot. *Samples:* Whole cell lysate (10 µg) from CT26 and C6 cells prepared using NETN lysis buffer. *Antibody:* Affinity purified rabbit anti-NONO antibody (A300-587A lot 3) used for WB at 0.04 µg/ml. *Detection:* Chemiluminescence with an exposure time of 1 second.

**Detection of mouse NONO by immunohistochemistry.**

Sample: FFPE section of mouse intestine. *Antibody:*

Affinity purified rabbit anti-NONO (Cat. No. A300-587A

Lot2) used at a dilution of 1:200 (1 µg/ml). *Detection:* DAB