



SZABO SCANDIC

Part of Europa Biosite

Produktinformation



Forschungsprodukte & Biochemikalien



Zellkultur & Verbrauchsmaterial



Diagnostik & molekulare Diagnostik



Laborgeräte & Service

Weitere Information auf den folgenden Seiten!
See the following pages for more information!



Lieferung & Zahlungsart

siehe unsere [Liefer- und Versandbedingungen](#)

Zuschläge

- Mindermengenzuschlag
- Trockeneiszuschlag
- Gefahrgutzuschlag
- Expressversand

SZABO-SCANDIC HandelsgmbH

Quellenstraße 110, A-1100 Wien

T. +43(0)1 489 3961-0

F. +43(0)1 489 3961-7

mail@szabo-scandic.com

www.szabo-scandic.com

[linkedin.com/company/szaboscandic](https://www.linkedin.com/company/szaboscandic) 

VCP Antibody

Rabbit Polyclonal

Antigen Affinity Purified

Protein ID NP_009057.1

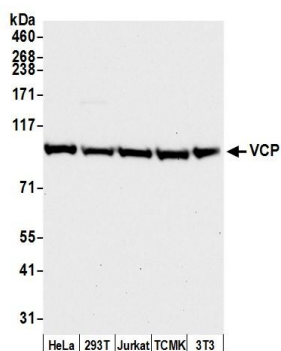
Catalog No. A300-588A-T

GeneID 7415

Lot No. A300-588A-T-2

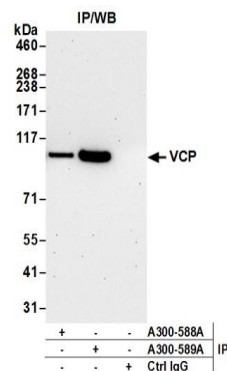
APPLICATIONS	WB, IP, IHC
SPECIES REACTIVITY	Human, Mouse
PRESUMED REACTIVITY	Based on 100% sequence identity, this antibody is predicted to react with Rat, Zebrafish, Bovine and Pig
AMOUNT	10 µl
CONCENTRATION	200 µg/ml
STORAGE/SHELF LIFE	2 – 8°C / 1 year from date of receipt
PHYSICAL STATE	Liquid
BUFFER	Tris-buffered Saline containing 0.1% BSA and 0.09% Sodium Azide
ISOTYPE	IgG
ORIGIN	USA
PRODUCTION PROCEDURES	<p>Antibody was affinity purified using an epitope specific to VCP immobilized on solid support.</p> <p>The epitope recognized by A300-588A-T maps to a region between residues 1 and 50 of human Valosin-Containing Protein using the numbering given in entry NP_009057.1 (GeneID 7415).</p>
APPLICATIONS	<p>Centrifuge tube to remove product from lid. Optimal working dilutions should be determined experimentally by the investigator. Prepare working dilution immediately before use.</p> <p>Western Blot 1:2,000 – 1:10,000</p> <p>Immunoprecipitation 1 – 5 µg/mg lysate</p> <p>Immunohistochemistry 1:200 – 1:1,000. Epitope retrieval with citrate buffer pH 6.0 is recommended for FFPE tissue sections.</p>
ADDITIONAL INFO	<p>https://www.bethyl.com/product/A300-588A-T</p> <p>Use the link above to view SDS, a current list of citations, and other product specific information.</p> <p>IP-western blot protocol: https://www.bethyl.com/content/protocol_IP_WB</p>

This document certifies that this product has met all of the quality control standards defined by Bethyl Laboratories, Inc.
Michael Spencer, PhD Date: June 6, 2022



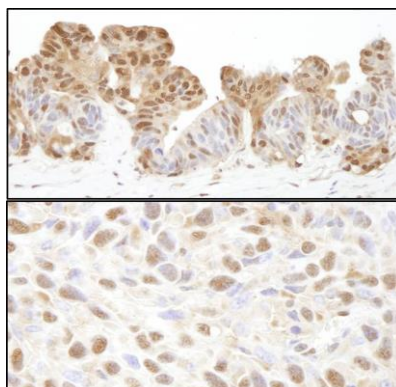
Detection of human and mouse VCP by western blot.

Samples: Whole cell lysate (50 µg) from HeLa, HEK293T, Jurkat, mouse TCMK-1, and mouse NIH 3T3 cells prepared using NETN lysis buffer. **Antibody:** Affinity purified rabbit anti-VCP antibody A300-588A (lot A300-588A-2) used for WB at 0.1 µg/ml. **Detection:** Chemiluminescence with an exposure time of 10 seconds.



Detection of human VCP by western blot of immunoprecipitates.

Samples: Whole cell lysate (1.0 mg per IP reaction; 20% of IP loaded) from HeLa cells prepared using NETN lysis buffer. **Antibodies:** Affinity purified rabbit anti-VCP antibody A300-588A (lot A300-588A-2) used for IP at 3 µg per reaction. VCP was also immunoprecipitated by rabbit anti-VCP antibody A300-589A. For blotting immunoprecipitated VCP, A300-588A was used at 1 µg/ml. **Detection:** Chemiluminescence with an exposure time of 30 seconds.



Detection of human and mouse VCP by immunohistochemistry.

Sample: FFPE sections of human ovarian carcinoma (upper) and mouse squamous cell carcinoma (lower). **Antibody:** Affinity purified rabbit anti-VCP (Cat. No. A300-588A Lot1) used at a dilution of 1:200 (1 µg/ml). **Detection:** DAB