



SZABO SCANDIC

Part of Europa Biosite

Produktinformation



Forschungsprodukte & Biochemikalien



Zellkultur & Verbrauchsmaterial



Diagnostik & molekulare Diagnostik



Laborgeräte & Service

Weitere Information auf den folgenden Seiten!
See the following pages for more information!



Lieferung & Zahlungsart

siehe unsere [Liefer- und Versandbedingungen](#)

Zuschläge

- Mindermengenzuschlag
- Trockeneiszuschlag
- Gefahrgutzuschlag
- Expressversand

SZABO-SCANDIC HandelsgmbH

Quellenstraße 110, A-1100 Wien

T. +43(0)1 489 3961-0

F. +43(0)1 489 3961-7

mail@szabo-scandic.com

www.szabo-scandic.com

[linkedin.com/company/szaboscandic](https://www.linkedin.com/company/szaboscandic) 

Matrin 3 Antibody

Rabbit Polyclonal

Antigen Affinity Purified

Protein ID NP_061322.2

Catalog No. A300-590A

GeneID 9782

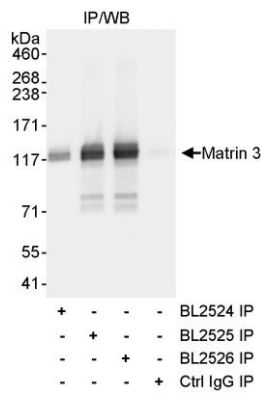
Lot No. A300-590A-1



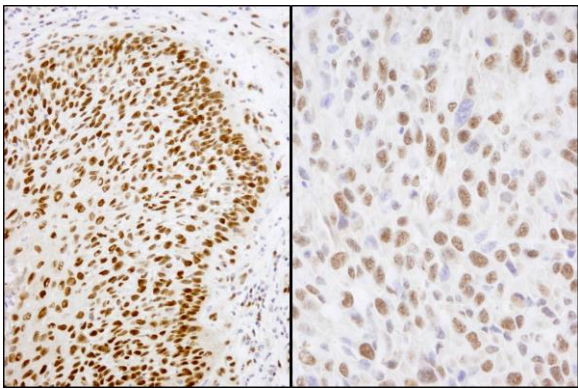
APPLICATIONS	IP, IHC						
SPECIES REACTIVITY	Human, Mouse						
PRESUMED REACTIVITY	Based on 100% sequence identity, this antibody is predicted to react with Rat						
AMOUNT	100 µl						
CONCENTRATION	1000 µg/ml						
STORAGE/SHELF LIFE	2 – 8° C / 1 year from date of receipt						
PHYSICAL STATE	Liquid						
BUFFER	Tris-citrate/phosphate buffer, pH 7 to 8 containing 0.09% Sodium Azide						
ISOTYPE	IgG						
ORIGIN	USA						
PRODUCTION PROCEDURES	<p>Antibody was affinity purified using an epitope specific to Matrin 3 immobilized on solid support.</p> <p>The epitope recognized by A300-590A maps to a region between residues 475 and 500 of human Matrin 3 using the numbering given in entry NP_061322.2 (GeneID 9782).</p> <p>Immunoglobulin concentration was determined by extinction coefficient: absorbance at 280 nm of 1.4 equals 1.0 mg of IgG.</p>						
APPLICATIONS	<p>Centrifuge tube to remove product from lid. Optimal working dilutions should be determined experimentally by the investigator. Prepare working dilution immediately before use.</p> <table><tr><td>Western Blot</td><td>Not recommended. Use rabbit anti-Matrin 3 antibody A300-591A.</td></tr><tr><td>Immunoprecipitation</td><td>1 – 4 µg/mg lysate</td></tr><tr><td>Immunohistochemistry</td><td>1:1,000 – 1:5,000. Epitope retrieval with citrate buffer pH 6.0 is recommended for FFPE tissue sections.</td></tr></table>	Western Blot	Not recommended. Use rabbit anti-Matrin 3 antibody A300-591A.	Immunoprecipitation	1 – 4 µg/mg lysate	Immunohistochemistry	1:1,000 – 1:5,000. Epitope retrieval with citrate buffer pH 6.0 is recommended for FFPE tissue sections.
Western Blot	Not recommended. Use rabbit anti-Matrin 3 antibody A300-591A.						
Immunoprecipitation	1 – 4 µg/mg lysate						
Immunohistochemistry	1:1,000 – 1:5,000. Epitope retrieval with citrate buffer pH 6.0 is recommended for FFPE tissue sections.						
APPLICATION NOTES	Western blot of immunoprecipitates performed using Normal Pig Serum (Cat. No. S100-020), Goat anti-Rabbit Light Chain HRP Conjugate (Cat. No. A120-113P) and 4-8% SDS-PAGE (link to IP-western blot protocol in Additional Info section below).						
IHC HUMAN CONTROLS	Breast Carcinoma, Laryngeal Squamous Cell Carcinoma, Ovarian Carcinoma, Prostate Carcinoma, Stomach Adenocarcinoma, Testicular Seminoma						
IHC MOUSE CONTROLS	Squamous Cell Carcinoma						
ADDITIONAL INFO	<p>https://www.bethyl.com/product/A300-590A</p> <p>Use the link above to view SDS, a current list of citations, and other product specific information.</p> <p>IP-western blot protocol: https://www.bethyl.com/content/protocol_IP_WB</p>						

This document certifies that this product has met all of the quality control standards defined by Bethyl Laboratories, Inc.
Eric McIntush, PhD | Chief Scientific Officer

Date: June 21, 2019



Detection of human Matrin 3 by western blot after immunoprecipitation. *Samples:* Whole cell lysate (1 mg for IP, 1 /4 of IP loaded) from HeLa cells. *Antibodies:* Affinity purified rabbit anti-Matrin 3 antibody BL2525 (Cat. No. A300-590A) used for IP at 3 µg/mg lysate. Matrin 3 was also immunoprecipitated using rabbit anti-Matrin 3 antibodies BL2524 and BL2526 (Cat. No. A300-591A) at 3 µg/mg lysate. immunoprecipitatesd Matrin 3 was blotted using BL2526 at 1 µg/ml. *Detection:* Chemiluminescence with an exposure time of 3 seconds.



Detection of human and mouse Matrin 3 by immunohistochemistry. *Sample:* FFPE section of human laryngeal squamous cell carcinoma (left) and mouse squamous cell carcinoma (right). *Antibody:* Affinity purified rabbit anti- Matrin 3 (Cat. No. A300-590A Lot1) used at a dilution of 1:1,000 (1µg/ml). *Detection:* DAB