



# SZABO SCANDIC

Part of Europa Biosite

## Produktinformation



Forschungsprodukte & Biochemikalien



Zellkultur & Verbrauchsmaterial



Diagnostik & molekulare Diagnostik



Laborgeräte & Service

Weitere Information auf den folgenden Seiten!  
See the following pages for more information!



### Lieferung & Zahlungsart

siehe unsere [Liefer- und Versandbedingungen](#)

### Zuschläge

- Mindermengenzuschlag
- Trockeneiszuschlag
- Gefahrgutzuschlag
- Expressversand

### SZABO-SCANDIC HandelsgmbH

Quellenstraße 110, A-1100 Wien

T. +43(0)1 489 3961-0

F. +43(0)1 489 3961-7

[mail@szabo-scandic.com](mailto:mail@szabo-scandic.com)

[www.szabo-scandic.com](http://www.szabo-scandic.com)

[linkedin.com/company/szaboscandic](https://www.linkedin.com/company/szaboscandic) 

# CAP-D3 Antibody

Rabbit Polyclonal

Antigen Affinity Purified	RefSeq ID	NP_056076.1
Catalog No. A300-604A	Uniprot ID	P42695
Lot No. A300-604A-5	GeneID	23310

---

<b>APPLICATIONS</b>	WB, IP
<b>SPECIES REACTIVITY</b>	Human
<b>AMOUNT</b>	100 µl
<b>CONCENTRATION</b>	200 µg/ml
<b>STORAGE/SHELF LIFE</b>	2 – 8°C / 1 year from date of receipt
<b>PHYSICAL STATE</b>	Liquid
<b>BUFFER</b>	Tris-buffered Saline containing 0.1% BSA and 0.09% Sodium Azide
<b>ISOTYPE</b>	IgG
<b>ORIGIN</b>	USA
<b>PRODUCTION PROCEDURES</b>	Antibody was affinity purified using an epitope specific to CAP-D3 immobilized on solid support.

The epitope recognized by A300-604A maps to a region between residue 1450 and the C-terminus (residue 1498) of human Chromosome-Associated Protein D3 using the numbering given in entry NP\_056076.1 (GeneID 23310).

Immunoglobulin concentration was determined by extinction coefficient: absorbance at 280 nm of 1.4 equals 1.0 mg of IgG.

**APPLICATIONS** Centrifuge tube to remove product from lid. Optimal working dilutions should be determined experimentally by the investigator. Prepare working dilution immediately before use.

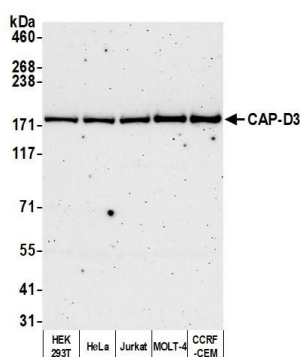
Western Blot 1:2,000 – 1:10,000

Immunoprecipitation 2 – 10 µg/mg lysate

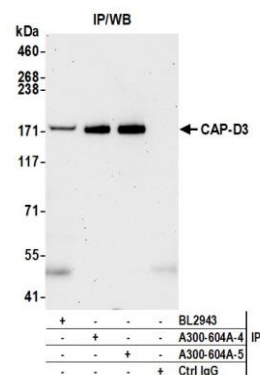
**ADDITIONAL INFO** <https://www.fortislife.com/p/A300-604A>

Use the link above to view SDS, a current list of citations, and other product specific information.

This document certifies that this product has met all of the quality control standards defined by Bethyl Laboratories, Inc.  
Michael Spencer, PhD Date: November 15, 2022



**Detection of human CAP-D3 by western blot.** *Samples:* Whole cell lysate (50 µg) from HEK293T, HeLa, Jurkat, MOLT-4, and CCRF-CEM cells prepared using NETN lysis buffer. *Antibody:* Affinity purified rabbit anti-CAP-D3 antibody (A300-604A lot 5) used for WB at 0.1 µg/ml. *Detection:* Chemiluminescence with an exposure time of 30 seconds.



**Detection of human CAP-D3 by western blot of immunoprecipitates.** *Samples:* Whole cell lysate (1.0 mg per IP reaction; 5% of IP loaded) from HEK293T cells prepared using NETN lysis buffer. *Antibodies:* Affinity purified rabbit anti-CAP-D3 antibody (A300-604A lot 5) used for IP at 6 µg per reaction. CAP-D3 was also immunoprecipitated by a previous lot of this antibody (A300-604A lot 4) and a second antibody against a different epitope of CAP-D3 (BL2943). For blotting immunoprecipitated CAP-D3, A300-604A was used at 0.04 µg/ml. *Detection:* Chemiluminescence with an exposure time of 30 seconds.