



SZABO SCANDIC

Part of Europa Biosite

Produktinformation



Forschungsprodukte & Biochemikalien



Zellkultur & Verbrauchsmaterial



Diagnostik & molekulare Diagnostik



Laborgeräte & Service

Weitere Information auf den folgenden Seiten!
See the following pages for more information!



Lieferung & Zahlungsart

siehe unsere [Liefer- und Versandbedingungen](#)

Zuschläge

- Mindermengenzuschlag
- Trockeneiszuschlag
- Gefahrgutzuschlag
- Expressversand

SZABO-SCANDIC Handels GmbH

Quellenstraße 110, A-1100 Wien

T. +43(0)1 489 3961-0

F. +43(0)1 489 3961-7

mail@szabo-scandic.com

www.szabo-scandic.com

[linkedin.com/company/szaboscandic](https://www.linkedin.com/company/szaboscandic) 

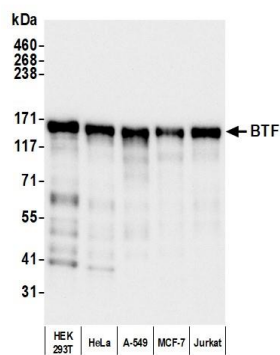
BTF Antibody

Rabbit Polyclonal

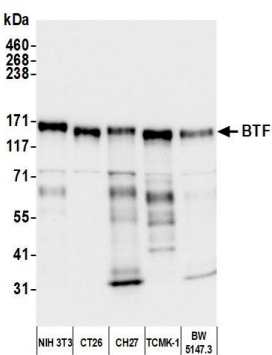
| | | |
|---------------------------|------------|-------------|
| Antigen Affinity Purified | RefSeq ID | NP_055554.1 |
| Catalog No. A300-608A-T | Uniprot ID | Q9NYF8 |
| Lot No. 3 | GeneID | 9774 |

| | |
|------------------------------|--|
| APPLICATIONS | WB, IP, IHC |
| SPECIES REACTIVITY | Human, Mouse |
| AMOUNT | 10 µl |
| CONCENTRATION | 200 µg/ml |
| STORAGE/SHELF LIFE | 2 – 8°C / 1 year from date of receipt |
| PHYSICAL STATE | Liquid |
| BUFFER | Tris-buffered Saline containing 0.1% BSA and 0.09% Sodium Azide |
| ISOTYPE | IgG |
| ORIGIN | USA |
| PRODUCTION PROCEDURES | Antibody was affinity purified using an epitope specific to BTF immobilized on solid support. The epitope recognized by A300-608A-T maps to a region between residues 150 and 200 of human BCL2-Associated Transcription Factor 1 using the numbering given in entry NP_055554.1 (GeneID 9774). |
| APPLICATIONS | Centrifuge tube to remove product from lid. Optimal working dilutions should be determined experimentally by the investigator. Prepare working dilution immediately before use. Western Blot 1:2,000 – 1:10,000 Immunoprecipitation 2 – 10 µg/mg lysate Immunohistochemistry 1:100 to 1:400. Epitope retrieval with citrate buffer pH6.0 is recommended for FFPE tissue sections. |
| IHC HUMAN CONTROLS | Breast Carcinoma, Metastatic Lymph Node, Ovarian Carcinoma, Prostate Carcinoma, Skin Basal Cell Carcinoma, Testicular Seminoma |
| ADDITIONAL INFO | https://www.fortislifesciences.com/p/A300-608A-T Use the link above to view SDS, a current list of citations, and other product specific information. |

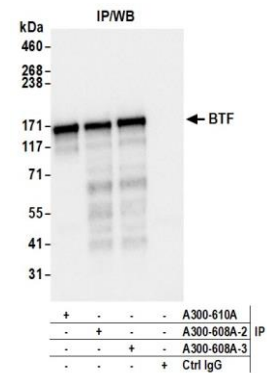
This document certifies that this product has met all of the quality control standards defined by Bethyl Laboratories, Inc.
Michael Spencer, PhD Date: June 9, 2023



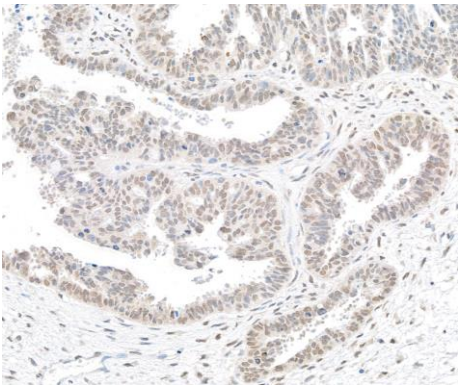
Detection of human BTF by western blot. *Samples:* Whole cell lysate (10 µg) from HEK293T, HeLa, A-549, MCF-7, and Jurkat cells prepared using NETN lysis buffer. *Antibody:* Affinity purified rabbit anti-BTF antibody (A300-608A-3 lot 1) used for WB at 0.04 µg/ml. *Detection:* Chemiluminescence with an exposure time of 10 seconds.



Detection of mouse BTF by western blot. *Samples:* Whole cell lysate (10 µg) from NIH 3T3, CT26, CH27, TCMK-1, and BW5147.3 cells prepared using NETN lysis buffer. *Antibody:* Affinity purified rabbit anti-BTF antibody (A300-608A lot 3) used for WB at 0.04 µg/ml. *Detection:* Chemiluminescence with an exposure time of 10 seconds.



Detection of human BTF by western blot of immunoprecipitates. *Samples:* Whole cell lysate (1 mg per IP; 10% of IP loaded) from HEK293T cells prepared using NETN lysis buffer. *Antibodies:* Affinity purified rabbit anti-BTF antibody (A300-608A lot 3) used for IP at 6 µg per reaction. BTF was also immunoprecipitated by a previous lot of this antibody (A300-608A lot 2) and a second antibody against a different epitope of BTF (A300-610A). For blotting immunoprecipitated BTF, A300-608A was used at 0.04 µg/ml. *Detection:* Chemiluminescence with an exposure time of 1 second.



Detection of human BTF by immunohistochemistry. *Sample:* FFPE section of human ovarian carcinoma. *Antibody:* Affinity purified rabbit anti-BTF (A300-608A lot 3) used at a dilution of 1:1,000 (0.2µg/ml). *Detection:* DAB