



SZABO SCANDIC

Part of Europa Biosite

Produktinformation



Forschungsprodukte & Biochemikalien



Zellkultur & Verbrauchsmaterial



Diagnostik & molekulare Diagnostik



Laborgeräte & Service

Weitere Information auf den folgenden Seiten!
See the following pages for more information!



Lieferung & Zahlungsart

siehe unsere [Liefer- und Versandbedingungen](#)

Zuschläge

- Mindermengenzuschlag
- Trockeneiszuschlag
- Gefahrgutzuschlag
- Expressversand

SZABO-SCANDIC Handels GmbH

Quellenstraße 110, A-1100 Wien

T. +43(0)1 489 3961-0

F. +43(0)1 489 3961-7

mail@szabo-scandic.com

www.szabo-scandic.com

[linkedin.com/company/szaboscandic](https://www.linkedin.com/company/szaboscandic) 

BTF Antibody

Rabbit Polyclonal

Antigen Affinity Purified	RefSeq ID	NP_055554.1
Catalog No. A300-608A	Uniprot ID	Q9NYF8
Lot No. 3	GeneID	9774

APPLICATIONS	WB, IP, IHC
SPECIES REACTIVITY	Human, Mouse
AMOUNT	100 µl
CONCENTRATION	200 µg/ml
STORAGE/SHELF LIFE	2 – 8°C / 1 year from date of receipt
PHYSICAL STATE	Liquid
BUFFER	Tris-buffered Saline containing 0.1% BSA and 0.09% Sodium Azide
ISOTYPE	IgG
ORIGIN	USA
PRODUCTION PROCEDURES	Antibody was affinity purified using an epitope specific to BTF immobilized on solid support. The epitope recognized by A300-608A maps to a region between residues 150 and 200 of human BCL2-Associated Transcription Factor 1 using the numbering given in entry NP_055554.1 (GeneID 9774).

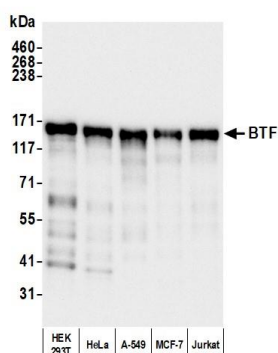
Immunoglobulin concentration was determined by extinction coefficient: absorbance at 280 nm of 1.4 equals 1.0 mg of IgG.

APPLICATIONS	Centrifuge tube to remove product from lid. Optimal working dilutions should be determined experimentally by the investigator. Prepare working dilution immediately before use. Western Blot 1:2,000 – 1:10,000 Immunoprecipitation 2 – 10 µg/mg lysate Immunohistochemistry 1:500 to 1:2,000. Epitope retrieval with citrate buffer pH6.0 is recommended for FFPE tissue sections.
---------------------	--

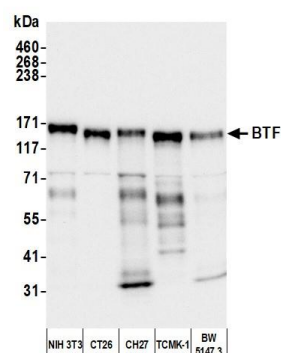
IHC HUMAN CONTROLS	Breast Carcinoma, Metastatic Lymph Node, Ovarian Carcinoma, Prostate Carcinoma, Skin Basal Cell Carcinoma, Testicular Seminoma
---------------------------	--

ADDITIONAL INFO	https://www.fortislife.com/p/A300-608A Use the link above to view SDS, a current list of citations, and other product specific information.
------------------------	---

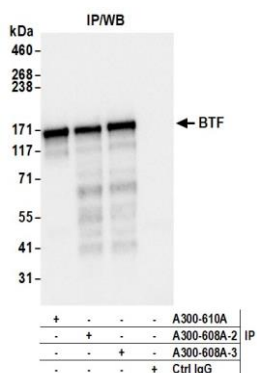
This document certifies that this product has met all of the quality control standards defined by Bethyl Laboratories, Inc.
Michael Spencer, PhD Date: June 9, 2023



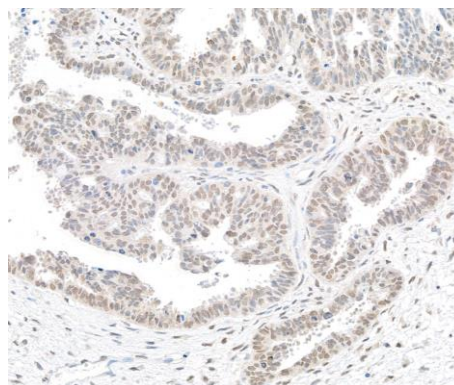
Detection of human BTF by western blot. *Samples:* Whole cell lysate (10 µg) from HEK293T, HeLa, A-549, MCF-7, and Jurkat cells prepared using NETN lysis buffer. *Antibody:* Affinity purified rabbit anti-BTF antibody (A300-608A-3 lot 1) used for WB at 0.04 µg/ml. *Detection:* Chemiluminescence with an exposure time of 10 seconds.



Detection of mouse BTF by western blot. *Samples:* Whole cell lysate (10 µg) from NIH 3T3, CT26, CH27, TCMK-1, and BW5147.3 cells prepared using NETN lysis buffer. *Antibody:* Affinity purified rabbit anti-BTF antibody (A300-608A lot 3) used for WB at 0.04 µg/ml. *Detection:* Chemiluminescence with an exposure time of 10 seconds.



Detection of human BTF by western blot of immunoprecipitates. *Samples:* Whole cell lysate (1 mg per IP; 10% of IP loaded) from HEK293T cells prepared using NETN lysis buffer. *Antibodies:* Affinity purified rabbit anti-BTF antibody (A300-608A lot 3) used for IP at 6 µg per reaction. BTF was also immunoprecipitated by a previous lot of this antibody (A300-608A lot 2) and a second antibody against a different epitope of BTF (A300-610A). For blotting immunoprecipitated BTF, A300-608A was used at 0.04 µg/ml. *Detection:* Chemiluminescence with an exposure time of 1 second.



Detection of human BTF by immunohistochemistry. *Sample:* FFPE section of human ovarian carcinoma. *Antibody:* Affinity purified rabbit anti-BTF (A300-608A lot 3) used at a dilution of 1:1,000 (0.2µg/ml). *Detection:* DAB