



# SZABO SCANDIC

Part of Europa Biosite

## Produktinformation



Forschungsprodukte & Biochemikalien



Zellkultur & Verbrauchsmaterial



Diagnostik & molekulare Diagnostik



Laborgeräte & Service

Weitere Information auf den folgenden Seiten!  
See the following pages for more information!



### Lieferung & Zahlungsart

siehe unsere [Liefer- und Versandbedingungen](#)

### Zuschläge

- Mindermengenzuschlag
- Trockeneiszuschlag
- Gefahrgutzuschlag
- Expressversand

### SZABO-SCANDIC HandelsgmbH

Quellenstraße 110, A-1100 Wien

T. +43(0)1 489 3961-0

F. +43(0)1 489 3961-7

[mail@szabo-scandic.com](mailto:mail@szabo-scandic.com)

[www.szabo-scandic.com](http://www.szabo-scandic.com)

[linkedin.com/company/szaboscandic](https://www.linkedin.com/company/szaboscandic) 

# BTF Antibody

Rabbit Polyclonal

Antigen Affinity Purified

Protein ID NP\_055554.1

Catalog No. A300-610A-T

GenelD 9774

Lot No. A300-610A-T-1

---

<b>APPLICATIONS</b>	WB, IP, IHC
<b>SPECIES REACTIVITY</b>	Human
<b>PRESUMED REACTIVITY</b>	Based on 100% sequence identity, this antibody is predicted to react with Mouse
<b>AMOUNT</b>	10 µl
<b>CONCENTRATION</b>	200 µg/ml
<b>STORAGE/SHELF LIFE</b>	2 - 8°C / 1 year from date of receipt
<b>PHYSICAL STATE</b>	Liquid
<b>BUFFER</b>	Tris-buffered Saline containing 0.1% BSA and 0.09% Sodium Azide
<b>ISOTYPE</b>	IgG
<b>ORIGIN</b>	USA
<b>PRODUCTION PROCEDURES</b>	Antibody was affinity purified using an epitope specific to BTF immobilized on solid support.

The epitope recognized by A300-610A-T maps to a region between residue 875 and the C-terminus (residue 920) of human BCL2-Associated Transcription Factor 1 using the numbering given in entry NP\_055554.1 (GenelD 9774).

**APPLICATIONS** Centrifuge tube to remove product from lid. Optimal working dilutions should be determined experimentally by the investigator. Prepare working dilution immediately before use.

Western Blot 1:2,000 - 1:10,000

Immunoprecipitation 1 - 4 µg/mg lysate

Immunohistochemistry 1:100 - 1:500. Epitope retrieval with citrate buffer pH 6.0 is recommended for FFPE tissue sections.

**ADDITIONAL INFO** <https://www.bethyl.com/product/A300-610A-T>

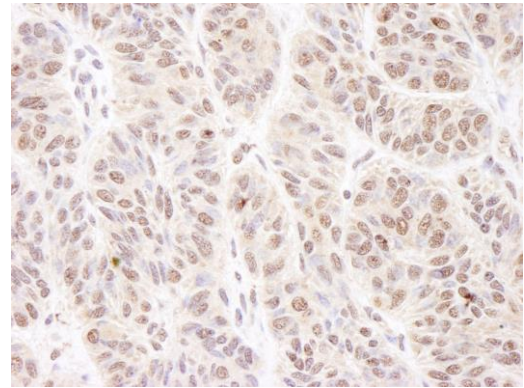
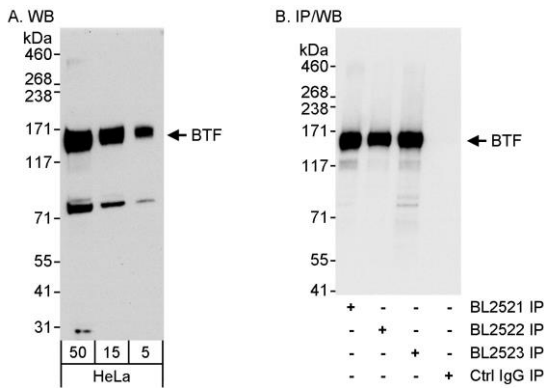
Use the link above to view SDS, a current list of citations, and other product specific information.

IP-western blot protocol: [https://www.bethyl.com/content/protocol\\_IP\\_WB](https://www.bethyl.com/content/protocol_IP_WB)

This document certifies that this product has met all of the quality control standards defined by Bethyl Laboratories, Inc.

Michael Spencer, PhD

Date: June 6, 2022



**Detection of human BTF by western blot and immunoprecipitation.** *Samples:* Whole cell lysate (5, 15 and 50 μg for WB; 1 mg for IP, 20% of IP loaded) from HeLa cells. *Antibodies:* Affinity purified rabbit anti-BTF antibody BL2523 (Cat. No. A300-610A) used for WB at 0.04 μg/ml (A) and 1 μg/ml (B) and used for IP at 3 μg/mg lysate (B). BTF was also immunoprecipitated using rabbit anti-BTF antibodies BL2521 (Cat. No. A300-608A) and BL2522 (Cat. No. A300-609A) at 3 μg/mg lysate. *Detection:* Chemiluminescence with exposure times of 30 seconds (A) and 3 seconds (B).

**Detection of human BTF by immunohistochemistry.** *Sample:* FFPE section of human skin carcinoma. *Antibody:* Affinity purified rabbit anti-BTF (Cat. No. A300-610A Lot1) used at a dilution of 1:200 (1 μg/ml). *Detection:* DAB