



# SZABO SCANDIC

Part of Europa Biosite

## Produktinformation



Forschungsprodukte & Biochemikalien



Zellkultur & Verbrauchsmaterial



Diagnostik & molekulare Diagnostik



Laborgeräte & Service

Weitere Information auf den folgenden Seiten!  
See the following pages for more information!



### Lieferung & Zahlungsart

siehe unsere [Liefer- und Versandbedingungen](#)

### Zuschläge

- Mindermengenzuschlag
- Trockeneiszuschlag
- Gefahrgutzuschlag
- Expressversand

### SZABO-SCANDIC HandelsgmbH

Quellenstraße 110, A-1100 Wien

T. +43(0)1 489 3961-0

F. +43(0)1 489 3961-7

[mail@szabo-scandic.com](mailto:mail@szabo-scandic.com)

[www.szabo-scandic.com](http://www.szabo-scandic.com)

[linkedin.com/company/szaboscandic](https://www.linkedin.com/company/szaboscandic) 

# MafA Antibody

Rabbit Polyclonal

Antigen Affinity Purified

Protein ID NP\_919331.1

Catalog No. A300-611A-T

GeneID 378435

Lot No. A300-611A-T-3

**APPLICATIONS** WB

**SPECIES REACTIVITY** Mouse

**PRESUMED REACTIVITY** Based on 100% sequence identity, this antibody is predicted to react with Human

**AMOUNT** 10 µl

**CONCENTRATION** 1000 µg/ml

**STORAGE/SHELF LIFE** 2 – 8°C / 1 year from date of receipt

**PHYSICAL STATE** Liquid

**BUFFER** Tris-citrate/phosphate buffer, pH 7 to 8 containing 0.09% Sodium Azide

**ISOTYPE** IgG

**ORIGIN** USA

**PRODUCTION PROCEDURES** Antibody was affinity purified using the peptide immobilized on solid support.

The epitope recognized by A300-611A-T maps to a region between residue 300 and the C-terminus (residue 359) of mouse v-maf musculoaponeurotic fibrosarcoma oncogene homolog A using the numbering given in entry NP\_919331.1 (GeneID 378435).

**APPLICATIONS** Centrifuge tube to remove product from lid. Optimal working dilutions should be determined experimentally by the investigator. Prepare working dilution immediately before use.

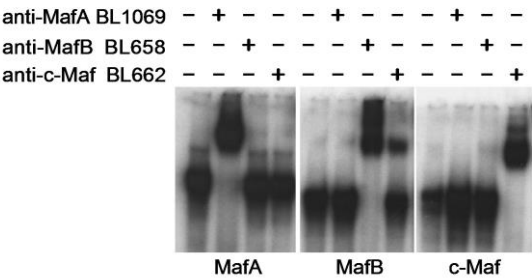
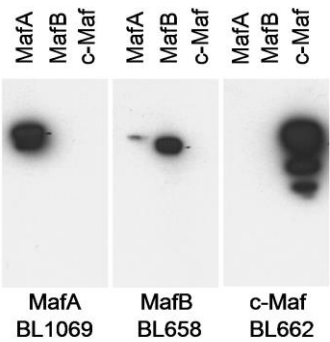
Western Blot 1:1,000 – 1:10,000

**ADDITIONAL INFO** <https://www.bethyl.com/product/A300-611A-T>

Use the link above to view SDS, a current list of citations, and other product specific information.

IP-western blot protocol: [https://www.bethyl.com/content/protocol\\_IP\\_WB](https://www.bethyl.com/content/protocol_IP_WB)

This document certifies that this product has met all of the quality control standards defined by Bethyl Laboratories, Inc.  
Michael Spencer, PhD Date: June 6, 2022

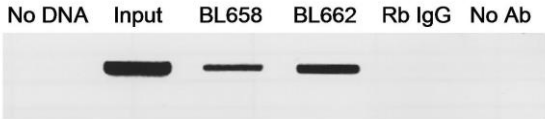


**Detection of MafA, MafB and cMaf by western blot.**

*Samples:* Nuclear extract (6 µg) from HeLa cells transfected with MafA, MafB or cMaf expression constructs.  
*Antibodies:* Affinity purified anti-MafA antibody BL1069 (Cat. No. A300-611A), anti-MafB Antibody (Cat. No. A300-612A) or anti-c-Maf antibody BL662 (Cat. No. A300-613A). Each antibody was used at 0.5 µg/ml.  
*Detection:* Chemiluminescence with a 5 second exposure.

**Electrophoretic Mobility Shift of MafA, MafB and c-Maf.**

*Samples:* Nuclear extract (6 µg) from HeLa cells transfected with MafA, MafB or c-Maf expression constructs.  
*Antibodies:* Affinity purified anti-MafA antibody BL1069 (Cat. No. A300-611A), anti-MafB Antibody BL658 (Cat. No. A300-612A) or anti-c-Maf antibody BL662 (Cat. No. A300-613A).



**Binding of MafA to the enhancer region of the endogenous insulin gene.** *Samples:* immunoprecipitatesd cross-linked DNA from betaTC-3 cells was analyzed by PCR. As controls, reactions were run with no DNA, with input chromatin, with DNA obtained after precipitation with rabbit IgG or without antibody (lanes 1 through 5, respectively). *Antibody:* Affinity purified rabbit anti-MafA antibody BL1069 (Cat. No. A300-611A).