



# SZABO SCANDIC

Part of Europa Biosite

## Produktinformation



Forschungsprodukte & Biochemikalien



Zellkultur & Verbrauchsmaterial



Diagnostik & molekulare Diagnostik



Laborgeräte & Service

Weitere Information auf den folgenden Seiten!  
See the following pages for more information!



### Lieferung & Zahlungsart

siehe unsere [Liefer- und Versandbedingungen](#)

### Zuschläge

- Mindermengenzuschlag
- Trockeneiszuschlag
- Gefahrgutzuschlag
- Expressversand

### SZABO-SCANDIC HandelsgmbH

Quellenstraße 110, A-1100 Wien

T. +43(0)1 489 3961-0

F. +43(0)1 489 3961-7

[mail@szabo-scandic.com](mailto:mail@szabo-scandic.com)

[www.szabo-scandic.com](http://www.szabo-scandic.com)

[linkedin.com/company/szaboscandic](https://www.linkedin.com/company/szaboscandic)



# MafA Antibody

Rabbit Polyclonal

Antigen Affinity Purified

Protein ID NP\_919331.1

Catalog No. A300-611A

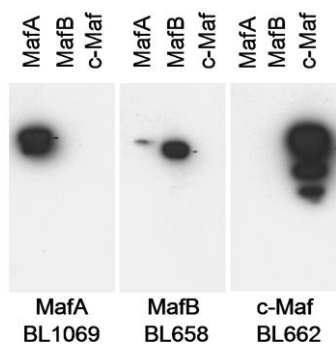
GeneID 378435

Lot No. A300-611A-3



<b>APPLICATIONS</b>	WB
<b>SPECIES REACTIVITY</b>	Mouse
<b>PRESUMED REACTIVITY</b>	Based on 100% sequence identity, this antibody is predicted to react with Human
<b>AMOUNT</b>	100 µl
<b>CONCENTRATION</b>	1000 µg/ml
<b>STORAGE/SHELF LIFE</b>	2 – 8° C / 1 year from date of receipt
<b>PHYSICAL STATE</b>	Liquid
<b>BUFFER</b>	Tris-citrate/phosphate buffer, pH 7 to 8 containing 0.09% Sodium Azide
<b>ISOTYPE</b>	IgG
<b>ORIGIN</b>	USA
<b>PRODUCTION PROCEDURES</b>	<p>The epitope recognized by A300-611A maps to a region between residue 300 and the C-terminus (residue 359) of mouse v-maf musculoaponeurotic fibrosarcoma oncogene homolog A using the numbering given in entry NP_919331.1 (GeneID 378435).</p> <p>Antibody was affinity purified using the peptide immobilized on solid support.</p> <p>Immunoglobulin concentration was determined by extinction coefficient: absorbance at 280 nm of 1.4 equals 1.0 mg of IgG.</p>
<b>APPLICATIONS</b>	<p>Centrifuge tube to remove product from lid. Optimal working dilutions should be determined experimentally by the investigator. Prepare working dilution immediately before use.</p> <p>Western Blot 1:1,000 – 1:10,000</p>
<b>APPLICATION NOTES</b>	<p>Western blot of immunoprecipitates performed using Normal Pig Serum (Cat. No. S100-020), Goat anti-Rabbit Light Chain HRP Conjugate (Cat. No. A120-113P) and 4-20% SDS-PAGE (link to IP-western blot protocol in Additional Info section below).</p> <p>Western blot of lysates performed using standard western blot reagents and 4-20% SDS-PAGE.</p>
<b>ADDITIONAL INFO</b>	<p><a href="https://www.bethyl.com/product/A300-611A">https://www.bethyl.com/product/A300-611A</a></p> <p>Use the link above to view SDS, a current list of citations, and other product specific information.</p> <p>IP-western blot protocol: <a href="https://www.bethyl.com/content/protocol_IP_WB">https://www.bethyl.com/content/protocol_IP_WB</a></p>

This document certifies that this product has met all of the quality control standards defined by Bethyl Laboratories, Inc.  
Eric McIntush, PhD | Chief Scientific Officer Date: June 21, 2019

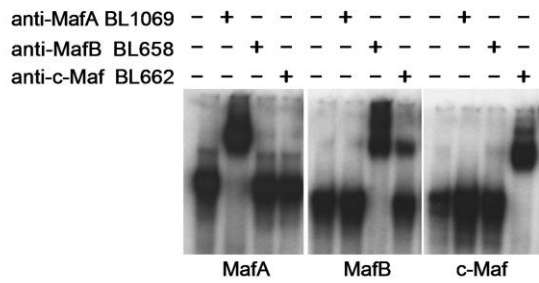


Detection of MafA, MafB and cMaf by western blot.

*Samples:* Nuclear extract (6 µg) from HeLa cells transfected with MafA, MafB or cMaf expression constructs.

*Antibodies:* Affinity purified anti-MafA antibody BL1069 (Cat. No. A300-611A), anti-MafB Antibody (Cat. No. A300-612A) or anti-c-Maf antibody BL662 (Cat. No. A300-613A). Each antibody was used at 0.5 µg/ml.

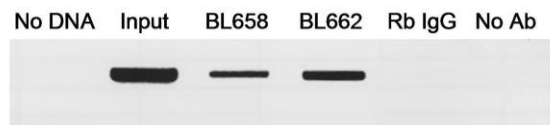
*Detection:* Chemiluminescence with a 5 second exposure.



Electrophoretic Mobility Shift of MafA, MafB and c-Maf.

*Samples:* Nuclear extract (6 µg) from HeLa cells transfected with MafA, MafB or c-Maf expression constructs.

*Antibodies:* Affinity purified anti-MafA antibody BL1069 (Cat. No. A300-611A), anti-MafB Antibody BL658 (Cat. No. A300-612A) or anti-c-Maf antibody BL662 (Cat. No. A300-613A).



**Binding of MafA to the enhancer region of the endogenous insulin gene.** *Samples:* immunoprecipitatesd cross-linked DNA from betaTC-3 cells was analyzed by PCR. As controls, reactions were run with no DNA, with input chromatin, with DNA obtained after precipitation with rabbit IgG or without antibody (lanes 1 through 5, respectively). *Antibody:* Affinity purified rabbit anti-MafA antibody BL1069 (Cat. No. A300-611A).