



SZABO SCANDIC

Part of Europa Biosite

Produktinformation



Forschungsprodukte & Biochemikalien



Zellkultur & Verbrauchsmaterial



Diagnostik & molekulare Diagnostik



Laborgeräte & Service

Weitere Information auf den folgenden Seiten!
See the following pages for more information!



Lieferung & Zahlungsart

siehe unsere [Liefer- und Versandbedingungen](#)

Zuschläge

- Mindermengenzuschlag
- Trockeneiszuschlag
- Gefahrgutzuschlag
- Expressversand

SZABO-SCANDIC HandelsgmbH

Quellenstraße 110, A-1100 Wien

T. +43(0)1 489 3961-0

F. +43(0)1 489 3961-7

mail@szabo-scandic.com

www.szabo-scandic.com

[linkedin.com/company/szaboscandic](https://www.linkedin.com/company/szaboscandic) 

Chk2 Antibody

Rabbit Polyclonal

Antigen Affinity Purified

Protein ID NP_009125.1

Catalog No. A300-619A-T

GeneID 11200

Lot No. A300-619A-T-1

APPLICATIONS	IP, IHC
SPECIES REACTIVITY	Human
AMOUNT	10 µl
CONCENTRATION	1000 µg/ml
STORAGE/SHELF LIFE	2 – 8°C / 1 year from date of receipt
PHYSICAL STATE	Liquid
BUFFER	Tris-citrate/phosphate buffer, pH 7 to 8 containing 0.09% Sodium Azide
ISOTYPE	IgG
ORIGIN	USA
PRODUCTION PROCEDURES	Antibody was affinity purified using an epitope specific to Chk2 immobilized on solid support.

The epitope recognized by A300-619A-T maps to a region between residues 475 and 525 of human Checkpoint Kinase 2 using the numbering given in entry NP_009125.1 (GeneID 11200).

Immunoglobulin concentration was determined by extinction coefficient: absorbance at 280 nm of 1.4 equals 1.0 mg of IgG.

APPLICATIONS Centrifuge tube to remove product from lid. Optimal working dilutions should be determined experimentally by the investigator. Prepare working dilution immediately before use.

Western Blot Not recommended. Use rabbit anti-Chk2 antibody A300-620A.

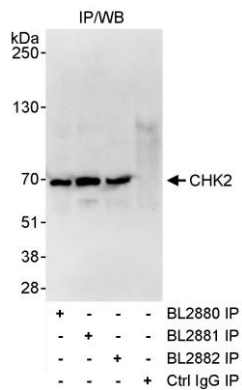
Immunoprecipitation 1 – 4 µg/mg lysate

Immunohistochemistry 1:250 – 1:1,000. Epitope retrieval with citrate buffer pH 6.0 is recommended for FFPE tissue sections.

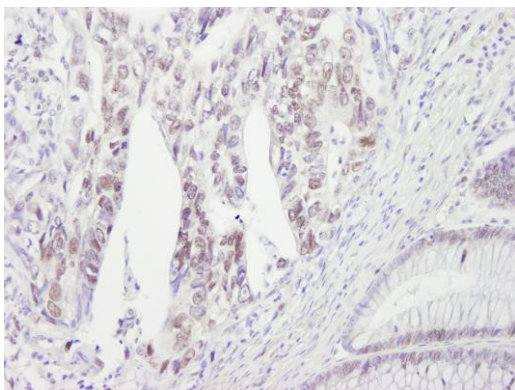
ADDITIONAL INFO <https://www.bethyl.com/product/A300-619A-T>

Use the link above to view SDS, a current list of citations, and other product specific information.
IP-western blot protocol: https://www.bethyl.com/content/protocol_IP_WB

This document certifies that this product has met all of the quality control standards defined by Bethyl Laboratories, Inc.
Michael Spencer, PhD Date: June 6, 2022



Detection of human CHK2 by western blot of immunoprecipitates. expndtw-6 *Samples:* Whole cell lysate (1 mg for IP, 20% of IP loaded) from HeLa cells. *Antibodies:* Affinity purified rabbit anti-CHK2 antibodies BL2880 (Cat. No. A300-618A), BL2881 (Cat. No. A300-619A) and BL2882 (Cat. No. A300-620A) used at 3 µg/mg lysate. For blotting immunoprecipitated CHK2, BL2882 was used at 0.04 µg/ml. *Detection:* Chemiluminescence with an exposure time 30 seconds.



Detection of human CHK2 by immunohistochemistry. *Sample:* FFPE section of human colon carcinoma. *Antibody:* Affinity purified rabbit anti-CHK2 (Cat. No. A300-619A Lot1)) used at a dilution of 1:1,000 (1 µg/ml). *Detection:* DAB