



SZABO SCANDIC

Part of Europa Biosite

Produktinformation



Forschungsprodukte & Biochemikalien



Zellkultur & Verbrauchsmaterial



Diagnostik & molekulare Diagnostik



Laborgeräte & Service

Weitere Information auf den folgenden Seiten!
See the following pages for more information!



Lieferung & Zahlungsart

siehe unsere [Liefer- und Versandbedingungen](#)

Zuschläge

- Mindermengenzuschlag
- Trockeneiszuschlag
- Gefahrgutzuschlag
- Expressversand

SZABO-SCANDIC HandelsgmbH

Quellenstraße 110, A-1100 Wien

T. +43(0)1 489 3961-0

F. +43(0)1 489 3961-7

mail@szabo-scandic.com

www.szabo-scandic.com

[linkedin.com/company/szaboscandic](https://www.linkedin.com/company/szaboscandic) 

GAPDH Antibody

Rabbit Polyclonal

Antigen Affinity Purified

Protein ID NP_002037.2

Catalog No. A300-639A-T

GeneID 2597

Lot No. A300-639A-T-6

APPLICATIONS	WB, IHC
SPECIES REACTIVITY	Human, Mouse
PRESUMED REACTIVITY	Based on 100% sequence identity, this antibody is predicted to react with Rat, Zebrafish, Chicken, Sheep, Bovine, Rabbit, Guinea pig_10141, Pig, Golden hamster, Cat and Orangutan
AMOUNT	10 µl
CONCENTRATION	200 µg/ml
STORAGE/SHELF LIFE	2 – 8°C / 1 year from date of receipt
PHYSICAL STATE	Liquid
BUFFER	Tris-buffered Saline containing 0.1% BSA and 0.09% Sodium Azide
ISOTYPE	IgG
ORIGIN	USA
PRODUCTION PROCEDURES	Antibody was affinity purified using an epitope specific to GAPDH immobilized on solid support.

The epitope recognized by A300-639A-T maps to a region between residues 150 and 200 of human Glyceraldehyde-3-Phosphate Dehydrogenase using the numbering given in entry NP_002037.2 (GeneID 2597).

APPLICATIONS Centrifuge tube to remove product from lid. Optimal working dilutions should be determined experimentally by the investigator. Prepare working dilution immediately before use.

Western Blot 1:2,000 – 1:10,000

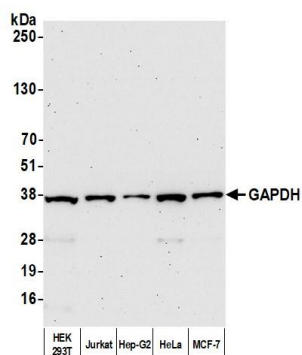
Immunoprecipitation Not recommended

Immunohistochemistry 1:500 to 1:2,000. Epitope retrieval with citrate buffer pH6.0 is recommended for FFPE tissue sections.

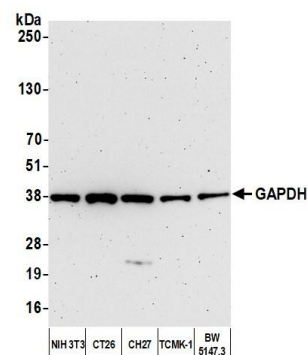
ADDITIONAL INFO <https://www.bethyl.com/product/A300-639A-T>

Use the link above to view SDS, a current list of citations, and other product specific information.

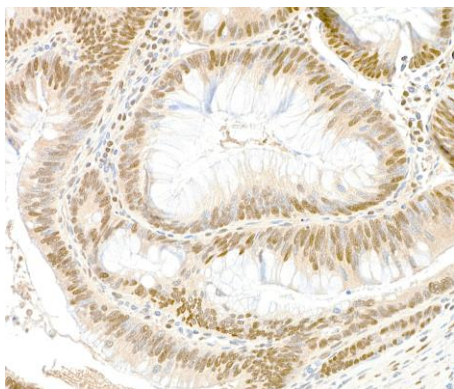
This document certifies that this product has met all of the quality control standards defined by Bethyl Laboratories, Inc.
Michael Spencer, PhD Date: June 6, 2022



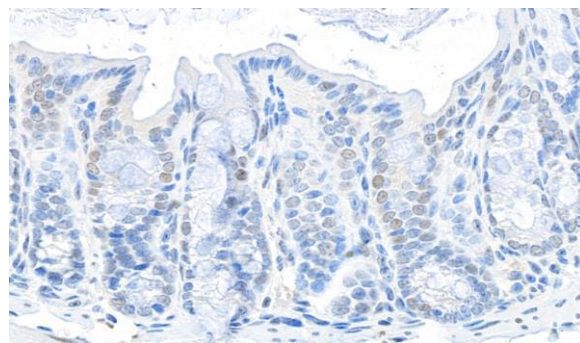
Detection of human GAPDH by western blot. *Samples:* Whole cell lysate (10 µg) from HEK293T, Jurkat, Hep-G2, HeLa, and MCF-7 cells prepared using NETN lysis buffer. *Antibody:* Affinity purified rabbit anti-GAPDH antibody (A300-639A lot 6) used for WB at 0.04 µg/ml. *Detection:* Chemiluminescence with an exposure time of 75 seconds.



Detection of mouse GAPDH by western blot. *Samples:* Whole cell lysate (10 µg) from NIH 3T3, CT26, CH27, TCMK-1, and BW5147.3 cells prepared using NETN lysis buffer. *Antibody:* Affinity purified rabbit anti-GAPDH antibody (A300-639A lot 6) used for WB at 0.04 µg/ml. *Detection:* Chemiluminescence with an exposure time of 3 minutes.



Detection of human GAPDH by immunohistochemistry. *Sample:* FFPE section of human colon carcinoma. *Antibody:* Affinity purified rabbit anti-GAPDH (A300-639A Lot 6) used at a dilution of 1:1,000 (0.2µg/ml). *Detection:* DAB



Detection of mouse GAPDH by immunohistochemistry. *Sample:* FFPE section of mouse intestine. *Antibody:* Affinity purified rabbit anti-GAPDH (A300-639A Lot 6) used at a dilution of 1:1,000 (0.2µg/ml). *Detection:* DAB