



SZABO SCANDIC

Part of Europa Biosite

Produktinformation



Forschungsprodukte & Biochemikalien



Zellkultur & Verbrauchsmaterial



Diagnostik & molekulare Diagnostik



Laborgeräte & Service

Weitere Information auf den folgenden Seiten!
See the following pages for more information!



Lieferung & Zahlungsart

siehe unsere [Liefer- und Versandbedingungen](#)

Zuschläge

- Mindermengenzuschlag
- Trockeneiszuschlag
- Gefahrgutzuschlag
- Expressversand

SZABO-SCANDIC Handels GmbH

Quellenstraße 110, A-1100 Wien

T. +43(0)1 489 3961-0

F. +43(0)1 489 3961-7

mail@szabo-scandic.com

www.szabo-scandic.com

[linkedin.com/company/szaboscandic](https://www.linkedin.com/company/szaboscandic)



KIAA0310 Antibody

Rabbit Polyclonal

Antigen Affinity Purified

Protein ID O15027

Catalog No. A300-648A-T

GeneID 9919

Lot No. A300-648A-T-1

APPLICATIONS WB, IP

SPECIES REACTIVITY Human

AMOUNT 10 µl

CONCENTRATION 200 µg/ml

STORAGE/SHELF LIFE 2 – 8°C / 1 year from date of receipt

PHYSICAL STATE Liquid

BUFFER Tris-buffered Saline containing 0.1% BSA and 0.09% Sodium Azide

ISOTYPE IgG

ORIGIN USA

PRODUCTION PROCEDURES Antibody was affinity purified using an epitope specific to KIAA0310 immobilized on solid support.

The epitope recognized by A300-648A-T maps to a region between residues 600 and 650 of human KIAA0310 using the numbering given in entry O15027 (GeneID 9919).

APPLICATIONS Centrifuge tube to remove product from lid. Optimal working dilutions should be determined experimentally by the investigator. Prepare working dilution immediately before use.

Western Blot 1:2,000 – 1:10,000

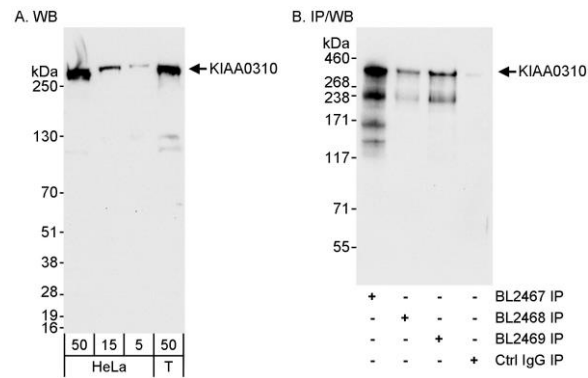
Immunoprecipitation 1 – 4 µg/mg lysate

ADDITIONAL INFO <https://www.bethyl.com/product/A300-648A-T>

Use the link above to view SDS, a current list of citations, and other product specific information.

IP-western blot protocol: https://www.bethyl.com/content/protocol_IP_WB

This document certifies that this product has met all of the quality control standards defined by Bethyl Laboratories, Inc.
Michael Spencer, PhD Date: June 6, 2022



Detection of human KIAA0310 by western blot and immunoprecipitation. *Samples:* Whole cell lysate from HeLa (5, 15, and 50 µg for WB; 1 mg for IP) and HEK293T (50 µg for WB) cells. *Antibodies:* Affinity purified rabbit anti-KIAA0310 antibody BL2467 (A300-648A) used for WB at 0.04 µg/ml and for IP at 3 µg/mg lysate. KIAA0310 was also immunoprecipitated by antibodies BL2468 and BL2469, which are to downstream epitopes on KIAA0301. *Detection:* Chemiluminescence with exposure times of 30 seconds (A) and 10 seconds (B).