



# SZABO SCANDIC

Part of Europa Biosite

## Produktinformation



Forschungsprodukte & Biochemikalien



Zellkultur & Verbrauchsmaterial



Diagnostik & molekulare Diagnostik



Laborgeräte & Service

Weitere Information auf den folgenden Seiten!  
See the following pages for more information!



### Lieferung & Zahlungsart

siehe unsere [Liefer- und Versandbedingungen](#)

### Zuschläge

- Mindermengenzuschlag
- Trockeneiszuschlag
- Gefahrgutzuschlag
- Expressversand

### SZABO-SCANDIC HandelsgmbH

Quellenstraße 110, A-1100 Wien

T. +43(0)1 489 3961-0

F. +43(0)1 489 3961-7

[mail@szabo-scandic.com](mailto:mail@szabo-scandic.com)

[www.szabo-scandic.com](http://www.szabo-scandic.com)

[linkedin.com/company/szaboscandic](https://www.linkedin.com/company/szaboscandic)



# DEC1 Antibody

Rabbit Polyclonal

Antigen Affinity Purified	Protein ID	NP_003661.1
Catalog No. A300-649A	GeneID	8553
Lot No. A300-649A-3		

<b>APPLICATIONS</b>	WB, IP, IHC
<b>SPECIES REACTIVITY</b>	Human
<b>PRESUMED REACTIVITY</b>	Based on 100% sequence identity, this antibody is predicted to react with Orangutan
<b>AMOUNT</b>	100 µl
<b>CONCENTRATION</b>	1000 µg/ml
<b>STORAGE/SHELF LIFE</b>	2 – 8°C / 1 year from date of receipt
<b>PHYSICAL STATE</b>	Liquid
<b>BUFFER</b>	Tris-citrate/phosphate buffer, pH 7 to 8 containing 0.09% Sodium Azide
<b>ISOTYPE</b>	IgG
<b>ORIGIN</b>	USA
<b>PRODUCTION PROCEDURES</b>	Antibody was affinity purified using an epitope specific to DEC1 immobilized on solid support.  The epitope recognized by A300-649A maps to a region between residues 350 and the C-terminus (residue 412) of human Differentially Expressed in Chondrocytes (Basic Helix-Loop-Helix Domain Containing, Class B, 2) using the numbering given in entry NP_003661.1 (GeneID 8553).

Immunoglobulin concentration was determined by extinction coefficient: absorbance at 280 nm of 1.4 equals 1.0 mg of IgG.

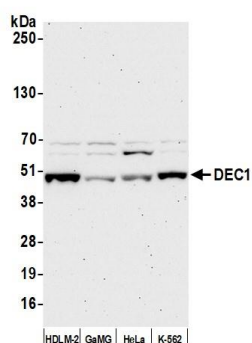
**APPLICATIONS** Centrifuge tube to remove product from lid. Optimal working dilutions should be determined experimentally by the investigator. Prepare working dilution immediately before use.

Western Blot	1:2,000 – 1:10,000
Immunoprecipitation	2 – 10 µg/mg lysate
Immunohistochemistry	1:500 – 1:2,000. Epitope retrieval with Tris-EDTA pH 9.0 is recommended for FFPE tissue sections.

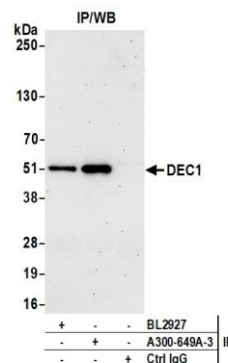
**IHC HUMAN CONTROLS** Breast Carcinoma, Ovarian Carcinoma, Prostate Carcinoma

**ADDITIONAL INFO** <https://www.bethyl.com/product/A300-649A>  
Use the link above to view SDS, a current list of citations, and other product specific information.  
IP-western blot protocol: [https://www.bethyl.com/content/protocol\\_IP\\_WB](https://www.bethyl.com/content/protocol_IP_WB)

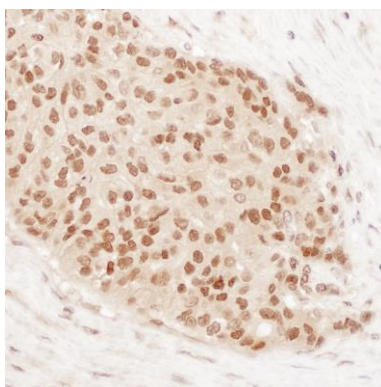
This document certifies that this product has met all of the quality control standards defined by Bethyl Laboratories, Inc.  
Michael Spencer, PhD Date: October 27, 2021



**Detection of human DEC1 by western blot.** *Samples:* Whole cell lysate (50 µg) from HDLM-2, GaMG, HeLa, and K-562 cells prepared using NETN lysis buffer. *Antibody:* Affinity purified rabbit anti-DEC1 antibody (A300-649A lot 3) used for WB at 0.4 µg/ml. *Detection:* Chemiluminescence with an exposure time of 75 seconds.



**Detection of human DEC1 by western blot of immunoprecipitates.** *Samples:* Whole cell lysate (1.0 mg per IP reaction; 20% of IP loaded) from K-562 cells prepared using NETN lysis buffer. *Antibodies:* Affinity purified rabbit anti-DEC1 antibody (A300-649A lot 3) used for IP at 6 µg per reaction. DEC1 was also immunoprecipitated by a second antibody against a different epitope of DEC1 (BL2927). For blotting immunoprecipitated DEC1, A300-649A was used at 0.4 µg/ml. *Detection:* Chemiluminescence with an exposure time of 75 seconds.



**Detection of human DEC1 by immunohistochemistry.**

*Sample:* FFPE section of human ovarian carcinoma.  
*Antibody:* Affinity purified rabbit anti-DEC1 (Cat. No. A300-649A Lot2) used at a dilution of 1:1,000 (1 µg/ml).  
*Detection:* DAB